

BOURTON-ON-THE-WATER

The 130th

VILLAGE SHOW

SCHEDULE

and entry forms for the Show held at
THE ROYAL BRITISH LEGION HALL
at **2.00 pm ON SATURDAY 24 AUGUST 2019**

organised by Bourton Vale Horticultural Society

Entries are open to Everyone
(not just Horticultural Society members)

REFRESHMENTS AVAILABLE AT THE SHOW

ENTRIES SECRETARY:

Mike Marshall, 6 Folly Field, Bourton-on-the-Water GL54 2HH
Telephone 01451 820866

BVHS SECRETARY

Antoinette Green, 4 Naight Villas, Lansdowne, Bourton-on-the-Water GL54 2AR
Telephone 01451 824141

www.gfgs.org.uk/clubs/bourtonvale



TIPS AND GUIDELINES FOR EXHIBITING

When exhibiting at shows there are certain ways that things have to be done, e.g. the way onions are displayed. If you need advice, contact the Entries Secretary for clarification.

However, for the gardener new to exhibiting this quick reference guide will make sure that your exhibit is not disqualified for not following the rules and gives you an idea of what the judges are looking for.

1. Read the schedule carefully taking special note of dates and times for entries and setting up.
2. Take note of how the schedule asks you to display – e.g. how much foliage on carrots.
3. Ensure all pots, plants, flowers are well watered before show day.
4. Experiment with flower containers before Show day. Flat base and large enough to avoid crushing.
5. Cut flowers in cool of morning or evening the day before Show. Place upright in deep water – cut stems at an angle to help water uptake. This will keep them fresh.
6. Approximate points awarded in judging: condition 30%; uniformity 30%; size and shape 20%; colour 20%.
7. Ensure correct number of items or specimens required are displayed as per the schedule (even if all are perfect if you have too many or too few, your exhibit will be disqualified).
8. Place exhibits on plain plates large enough so that there are no overlaps.
9. Ensure your competitor number is on EACH exhibit.
10. If in doubt ask a member with a Stewards badge for help.
11. Look at how winners have displayed their exhibits, what made them the best and make a note for next year.

RULES

- (1) The Show is open to exhibitors from ANY area.
Exhibits entry fee: Adults 25p per entry; Children 10p per entry.
- (2) Fruit, Flowers and Vegetables must have been grown by the Exhibitor. Exhibitors infringing this Rule will be disqualified and forfeit all claim to any prize money that may have been awarded. This Rule will be strictly enforced. This Rule does not apply to flower arrangements classes 52 - 57, for which flowers may be purchased.
- (3) All entries of exhibits must be made on a form to be found in this Schedule, (or on our website, or in writing) and must be completed and returned, **in a sealed envelope**, to the **VISITOR INFORMATION CENTRE, VICTORIA STREET, BOURTON ON THE WATER, GL54 2BU, delivered by hand, or sent by post to: ENTRIES SECRETARY, 6 FOLLY FIELD, BOURTON ON THE WATER GL54 2HH together with all ENTRY FEES ON OR BEFORE 16 AUGUST 2019.**
- (4) The Committee shall have power to decline any entry they may think improper, and decide in what section Competitors shall compete. The decision of the Committee shall be final.
- (5) The Judges have power to withhold the prizes from any exhibits through insufficient merit and the Judges' decision shall be accepted as final.
- (6) No exhibitor will be allowed to take more than one prize in the same Class, nor two prizes (except one be a Champion Prize) with the same exhibit. A maximum of two entries per person per class will be allowed.
- (7) All Cut Flowers should be shown with their own foliage, and Fruit and Vegetables in dishes or baskets to be provided by the Exhibitor.
- (8) The Committee will take all possible care of the exhibits but will not be responsible for any loss or damage that may occur.
- (9) **ALL EXHIBITS MUST BE STAGED BETWEEN 8.00 AM and 10.00 AM ON THE DAY OF THE SHOW. AT 10.00 AM ALL EXHIBITORS MUST LEAVE THE HALL. EXHIBITS MUST NOT BE REMOVED BEFORE 5.30 PM.**
- (10) No exhibitor will be allowed in the Hall, on any pretext during the judging on the day of the show, except those wearing the badge of the Committee.
- (11) Prizes will be: 1st - 50p, 2nd - 30p, 3rd - 20p. All prize money to be collected from the Treasurer between 3.00 pm and 4.45 pm on the day of the Show.
- (12) The Committee reserve to themselves the right to inspect previous to the Show Day anything entered for exhibition.
- (13) Any complaints must be made to the Hon. Secretary in writing before 3.00 pm on the day of the Show.

VEGETABLE CLASSES

Entry Fee: 25p per entry.

A maximum of two entries per Person per Class is permitted

CLASS

- 1 Five Potatoes, white.
- 2 Five Potatoes, other than white.
- 3 Four Beetroot, foliage trimmed to 75 mm.
- 4 Three Onions, each onion to weigh over 225 grams (8 oz) dressed.
- 5 Three Onions, each onion to weigh under 225 grams (8 oz) dressed.
- 6 Three Onions from sets.
- 7 Dish of Five Shallots, over 38 mm (1½") diameter.
- 8 Dish of Five Shallots, under 38 mm (1½") diameter.
- 9 Three Bulbs of Garlic.
- 10 Two Cobs of Sweetcorn, **one leaf** stripped off each cob to show the kernels.
- 11 Collection of Four Salad Vegetables in a basket approx. 30 cm/12" diameter.
- 12 Two Heads of Cabbage.
- 13 Three Parsnips, approximately 7.5 cm (3") foliage.
- 14 Three Courgettes without flowers.
- 15 Five Carrots. approximately 7.5 cm (3") foliage.
- 16 A Marrow.
- 17 Six Runner Beans.
- 18 The Longest Runner Bean.
- 19 Cherry Tomatoes on the Vine.
- 20 Five Tomatoes. (Not cherry tomatoes - see class 19)
- 21 One Cucumber.
- 22 Two Lettuce.
- 23 Two Sweet Peppers.
- 24 Six French Beans.
- 25 Four Chilli Peppers.
- 26 Five Sticks of Rhubarb, with some leaf attached.
- 27 Display together one Vegetable and one Flower.
- 28 A Vegetable Creature.

FRUIT CLASSES

CLASS

- 29 One Plate of any Soft Fruit, with the stalk attached, (12 of each but 6 strings of currants).
- 30 One Plate of any other Fruit, max. 5.

FLOWER CLASSES

Entry Fee: 25p per entry

A maximum of two entries per Person per Class is permitted

Exhibitors are requested to name the plants if possible. This is for the benefit of visitors and not a requirement of the competition. Pot measurements are taken inside the rim.

CLASS

- 31 A Vase of Mixed Grasses.
- 32 Container of Mixed Dahlias (maximum 20).
- 33 Vase of Five Specimen Dahlias, one variety.
- 34 Vase of Sweet Peas.
- 35 One Specimen Rose.
- 36 Three Stems Clustered Roses (one or more varieties).
- 37 Container of Mixed Herbaceous flowers.
- 38 Five Asters.
- 39 Vase of 3 Stems of Phlox.
- 40 Three Specimen Gladioli (any colour).
- 41 Collection of Mixed Annuals.
- 42 One Vase of Cosmos 43 3 Blooms of Hydrangea.

- 44 Orchids in max. 25.5 cm (10") pot.
- 45 A Cactus or a Succulent in a max. 25.5 cm (10") pot.
- 46 A Fuchsia in a max. 25.5 cm (10") pot.
- 47 Flowering Pot Plant (excluding fuchsias), max. 25.5 cm (10") pot.
- 48 A Begonia in a Pot, max. 25.5 cm (10").
- 49 Foliage Plant growing in a max.25.5 cm (10") pot.
- 50 Pelargoniums in a pot not exceeding 25.5 cm (10")
- 51 A Basket max. 25.5 cm (10") of Mixed Herbs with or without flowers.

FLOWER ARRANGING

Classes 51 - 56 - please see Rule 2.

- 52 A Fresh Foliage arrangement.
- 53 An Arrangement in a Wine Glass.
- 54 A Fresh arrangement in a Cup and Saucer.
- 55 A Fresh arrangement of 5 Stems of One Flower variety with Foliage.
- 56 Petite Fresh Flower Exhibit, 22.9 cm (9") overall.
- 57 An Arrangement of Cottage Garden Flowers.

DOMESTIC SECTION - A

Entry Fee: 25p per entry

A maximum of two entries per Person per Class is permitted

SECTION A1

CLASS

- 58 One jar of Raspberry Jam.
- 59 One jar of any other Jam.
- 60 One jar of Marmalade.
- 61 One jar of Lemon Curd.
- 62 One jar of Jelly.
- 63 One 1 lb jar of Honey.
- 64 One jar of Vegetable Chutney
- 65 One jar of Fruit Chutney.
- 66 One jar of Piccalilli.
- 67 Six Hens' Eggs of any one colour presented in a dish.
- 68 Six Bantam Eggs presented in a dish.

SECTION A2

CLASS

- 69 A Large White Loaf (not machine made)
- 70 A Large Brown Loaf (not machine made)
- 71 6 Sausage Rolls made with shortcrust pastry.
- 72 A Savoury Flan max. 20.5 cm / 8" diameter.
- 73 Six Cheese Scones.
- 74 Boiled Fruit Cake.
- 75 Cheesecake (chilled).
- 76 Six Chocolate Brownies.
- 77 Six Flapjacks.
- 78 A Round of Shortbread.
- 79 A Bakewell Tart.
- 80 Apple Pie on a Plate max. 20.5 cm / 8" diameter..
- 81 Victoria Sponge using three eggs, filled with raspberry jam and with castor sugar on top.

CLASS

82 Courgette Cake, using this recipe.

Oven 160° fan

Line base of 7" cake tin

INGREDIENTS:

About 175g (6oz) courgette, grated

175g (6 oz) plain flour

1 teaspoon baking powder

Half a teaspoon bicarbonate of soda

Half a teaspoon of salt

1 teaspoon cinnamon

Pinch of ground cloves

Few drops of almond essence

2 medium eggs

50 ml (2 fl.oz) corn oil

175 g (6 oz) caster sugar

25 ml (1 fl.oz) orange juice (2 ½ tablespoons)

Frosting Ingredients

100 g Philadelphia full fat cream cheese

1 tablespoon icing sugar

1 tablespoon orange juice

Method

1. Put grated courgette in sieve, and squeeze out moisture.
2. Mix dry ingredients in bowl (not sugar).
3. Beat egg in another bowl until frothy.
Add oil, sugar, orange juice, almond essence and courgette.
Mix well.
4. Add to the dry ingredients and mix.
5. Pour into tin and bake for 40-45 minutes.
6. Leave for 5 minutes in the tin, then turn out onto a clean cloth, set on a rack, then turn the right way up to cool.
7. Whip cream cheese, icing sugar and orange juice together to make frosting.

DOMESTIC SECTION - B

Entry Fee 25p per entry.

- NOTES:**
1. Articles in this section must not have been entered in Bourton Show before.
 2. Only ONE entry per Person Per Class is permitted.
 3. Large items must be displayed folded, but will be judged opened.

CLASS

- 83 A Knitted Scarf in double knitting.
- 84 An Item sewn in any medium, excluding embroidery, cross stitch or tapestry.
- 85 An item of Patchwork excluding cushions.
- 86 A Patchwork Cushion.
- 87 A Dressed Doll
- 88 A Child's Soft Toy or Plaything, knitted (no crochet).
- 89 Item of Crochet.
- 90 Child's Hand-knitted Garment (up to 32" (82 cm) chest).
- 91 An item knitted with 100g of wool.
- 92 Adult's Hand-knitted Garment double-knit or thicker.
- 93 An item Woven in any medium.
- 94 A Decorated Door Stop.
- 95 A Item made from Felt.
- 96 An item of Cross Stitch.
- 97 An item of Tapestry.
- 98 An item of Embroidery (NOT Tapestry) but can include long stitch.

HANDICRAFTS SECTION

Entry Fee 25p per entry.

A maximum of two entries per person per Class is permitted.

It would help in the staging of the Show if those competitors entering items in Class 101 would indicate on the entry form the approximate table space required to display their exhibits.

CLASS

- 99 A Hanging Christmas Tree Decoration.
- 100 A Book Mark in any medium.
- 101 An item of Handicraft, any other media.
Knitting, embroidery, patchwork or crochet not allowed in this Class.
- 102 A Decorated Lampshade 12" (30cm) diameter maximum.
- 103 Painting in Oils or Acrylic no larger than 15" x 12" (38 x 30.5 cm).
- 104 Picture in Water Colour or Pastel no larger than 15" x 12" (38 x 30.5 cm)
- 105 Drawing or Illustration no larger than 15" x 12" (38 x 30.5 cm)..
- 106 An Invitation Card.
All paintings to be framed or mounted suitably for exhibition.
- 107 Photograph '**A Black and White photo**' maximum size 6" x 4" (15.2 x 10.1cm).
- 108 Photograph '**Landscape**' maximum size 6" x 4" (15.2 x 10.1 cm).
- 109 Photograph '**Insect/insects**' maximum size 6" x 4" (15.2 x 10.1 cm).
- 110 Photograph '**People in the Garden**' maximum size 6" x 4" (15.2 x 10.1 cm).
Please put your entry number on the back of your photograph.

WINE SECTION

Entry Fee 25p per entry.

Easily removed corks in wine bottles much appreciated.

Only ONE entry per person per Class is permitted.

CLASS

- 111 One bottle of home-made Sweet White Wine (labelled).
In clear wine bottles
- 112 One bottle of home-made Dry White Wine (labelled).
In clear wine bottle.
- 113 One bottle of home-made Sweet Red Wine (labelled).
In clear wine bottle.
- 114 One bottle of home-made Dry Red Wine (labelled).
In clear wine bottle.
- 115 A Liqueur (labelled). In clear small bottle.
- 116 A bottle of Flavoured Gin in a clear bottle.

CHILDREN'S SECTION
up to Age 16 unless otherwise stated

AGE ON DAY OF SHOW MUST

**be stated on the FRONT of all items in Children's Section
or entries will be disqualified. (FULL NAME ON BACK)**

Entry Fee 10p per entry.

A maximum of two entries per person per Class is permitted

CLASS 116 - 119 to be aged 7 and under on the day of the Show

- 117 Handwriting - a Verse from your Favourite Nursery Rhyme.
- 118 A Vegetable Creature.
- 119 A Decorated Boiled Egg.
- 120 A Decorated Tea Paper Plate.

CLASS 120 - 123 to be aged 8 - 11 on the day of the Show

- 121 Handwriting - a Verse from your Favourite Poem.
- 122 Miniature Garden on a black seed tray (no artificial flowers).
- 123 An A4 Poster advertising a Film - hand made or computer generated.
- 124 A Decorated Tea Paper Plate celebrating Summer.

CLASS 124 - 126 up to age 11 on the day of the Show

- 125 A Flower Arrangement in a mug*.
- 126 Six Decorated Biscuits - It is the decoration that is judged.
The biscuits can be home made or bought.
- 127 An Item of Handicraft.

CLASS 127 - 129: Open to all ages up to 16 on the day of the Show

- 128 A Collection of Five Named Pressed Flowers mounted on A4 card.
- 129 A Painting of a Favourite Flower*.
- 130 A Collection of Vegetables grown by you and displayed on a dinner plate.
- 131 A half eggshell filled with compost and sown with grass to make a Grass
Head, - see drawing on page 12 for an idea

* A Cup is awarded for these classes.

*All prize money to be collected from the Treasurer
between 3.00 pm and 4.45 pm on the day of the show.*

CHILDREN'S ENTRY FORM

VILLAGE ANNUAL SHOW
SATURDAY 24 AUGUST 2019

This form must be filled in by the Exhibitor and **handed in WITH THE CORRECT TOTAL FEE** in a sealed envelope to:

THE VISITOR INFORMATION CENTRE, VICTORIA STREET, BOURTON ON THE WATER, GL54 2BU, delivered by hand in a sealed envelope or sent by post to:

MIKE MARSHALL, 6 FOLLY FIELD, BOURTON ON THE WATER GL54 2HH

(as per Rule 3) not later than **FRIDAY 16 AUGUST 2019**. (Entries will be accepted on plain paper). State below the Class (numbers only) in which you intend to exhibit.

A maximum of two entries per person per class.

Extra forms can be downloaded from our website (see cover).

All entries must be staged between 8.00 am and 10.00 am on the day of the Show

Class	Fee	Class	Fee	Class	Fee	Class	Fee	Class	Fee
Children's classes <input style="width: 40px; height: 20px;" type="text"/> @ 10p per entry								Total	

Name (Block letters).....

Address.....

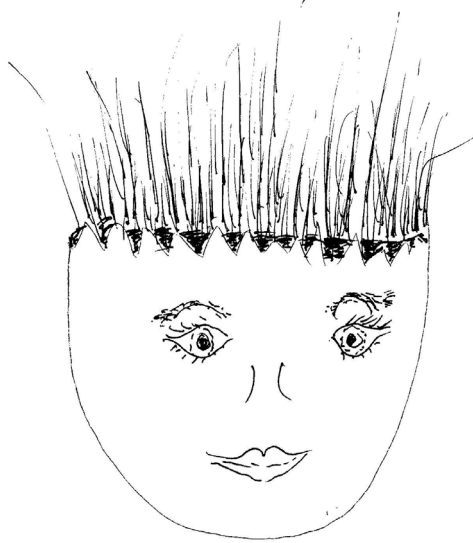
.....AGE.....

Telephone No..... email.....

For general interest exhibitors are requested to name the varieties of their produce if possible. A FREE ADMISSION TICKET will be given to everyone with eight or more entries.

EXHIBITS MUST NOT BE REMOVED BEFORE 5.30 PM

An idea for a Grass Head - but use your imagination.



Short hair, long hair, crew cut, stripes, braids.

Take half an eggshell (left over from your egg and soldiers).

Make a little drainage hole in the bottom.

Fill it with compost. It won't need much.

Water it well, then scatter grass seed all over the top.

Very gently push the seed down.

Keep it in an egg cup or on a saucer of sand. Make sure it doesn't get dry.

When the grass/hair has reached the right length,
think about styling the hair and the face!

You could do lots and experiment between now and the Show.

ADULTS ENTRY FORM

VILLAGE ANNUAL SHOW
SATURDAY 24 AUGUST 2019

This form must be filled in by the Exhibitor and **handed in WITH THE CORRECT TOTAL FEE** in a sealed envelope to:

THE VISITOR INFORMATION CENTRE, VICTORIA STREET, BOURTON ON THE WATER, GL54 2BU, delivered by hand in a sealed envelope or sent by post to:

MIKE MARSHALL, 6 FOLLY FIELD, BOURTON ON THE WATER GL54 2HH

(as per Rule 3) not later than **FRIDAY 16 AUGUST 2019**. (Entries will be accepted on plain paper). State below the Class (numbers only) in which you intend to exhibit.

A maximum of two entries per person per class.

Extra forms can be downloaded from our website (see cover).

All entries must be staged between 8.00 am and 10.00 am on the day of the Show

Class	Fee	Class	Fee	Class	Fee	Class	Fee	Class	Fee
Adult classes <input style="width: 50px; height: 20px;" type="text"/> @ 25p per entry								Total	

Name (Block letters).....

Address.....

.....

Telephone No..... email.....

For general interest exhibitors are requested to name the varieties of their produce if possible. A FREE ADMISSION TICKET will be given to everyone with eight or more entries.

EXHIBITS MUST NOT BE REMOVED BEFORE 5.30 PM

Special Category Logo Competition

We are looking for a creative person of any age
to design a new logo for our Gardening Society.

Your design can be hand-drawn or computer aided, intricate or simple. No words are needed for your logo, just let your creativity flow!

What does gardening mean to you? A simple flower, trees, views, garden forks and produce shared with friends and family. A Buzzing Bee, or Butterfly. The sky is the limit on your design.

Just one thing to bear in mind, that once scanned in and reduced in size the design should still be easily recognised. As we hope the winning design will be incorporated into our future literature for both online and printed copies.

Please drop your designs off in a sealed envelope with your name and contact details to **THE VISITOR INFORMATION CENTRE, VICTORIA STREET, BOURTON ON THE WATER, GL54 2BU, delivered by hand in a sealed envelope or sent by post to: MIKE MARSHALL, 6 FOLLY FIELD, BOURTON ON THE WATER GL54 2HH** (as per Rule 3) not later than **FRIDAY 16 AUGUST 2019.**

The entries will be displayed at the Village Annual Show on Saturday August 24th and judged on the day.

*This special category is free to enter
and there is a prize of £10.00 for your winning design.*

Name

Address

.....

Telephone number

PERPETUAL CHALLENGE TROPHIES

will be presented at 5.00 p.m.

- 1 SOCIETY'S CUP for the highest number of points in the Vegetable Classes. National Vegetable Society SILVER MEDAL and CARD to most meritorious exhibit in Vegetable Classes.
- 2 FESTIVAL CUP for the highest number of points in the Flower Classes.
- 3 WHITMORE CUP presented by the late G.M.J. Whitmore for the best Pot Plant.
- 4 THE BILL HUMPHRIES CUP for the best exhibit of Onions, Leeks or Shallots.
- 5 THE JOHN KING CUP for the best exhibit of Tomatoes (not Cherry Tomatoes).
- 6 THE D.T. BROWN CUP Presented by Messrs D.T. Brown for the best exhibit of Cut Flowers in the Show.
- 7 DOMESTIC CUP for the highest number of points in Classes 58–66 & 69–82.
- 8 THE CHEALES CUP for the best entry in the preserves Classes 58–66.
- 9 GEORGE COLLETT CUP for the highest number of points in Classes 83 - 98.
- 10 COUNTESS of BUCHAN CUP for the best exhibit in Classes 83 - 98.
- 11 THE BLOSS CUP presented by Miss K. Bloss, Classes 103–106.
- 12 THE HADLEY BOWL presented by the late L.C. Hadley for the best exhibit in Classes 107–110.
- 13 WINE CUP for the best exhibit in Classes 111–114.
- 14 MORRIS ROSE BOWL presented by the late C.A. Morris. for the best entry in Flower Arrangement Classes.
- 15 GRIFFITH-DAVIES CUP presented by the late J.D. Griffith-Davies for the best Painting of a Flower in Class 129.
- 16 GORE CUP Presented by Mrs C .W. Gore for Flower Arrangement in a Mug (School Children up to 11 years) Class 125.
- 17 THE GEORGE AND GLADYS CAIRNS CUP for the highest number of points in Classes 117–131.
- 18 ARBON CENTENARY CUP Presented by Dennis and Pat Arbon for the competitor scoring the highest number of points in the current Show who is not already a Cup winner.
19. THE RAY FARDON CUP Presented to the best Bourton Primary School Allotment.

TROPHIES will be held for one year only
and shall be returned to the Secretary
SEVEN DAYS before the Show in good condition.

BOURTON VALE HORTICULTURAL SOCIETY

Your Friendly Garden Club



New Members Welcome

Informative & Entertaining Speakers

Competitions, Raffles, Quizzes,
and Question Times

Garden Outings

Annual Show and Garden Party

Discounts on plants and seeds

.....

SUBSCRIPTION

£10.00 per person per annum

Visitor £2.00 per meeting

www.gfgs.org.uk/clubs/bourtonvale