

BOURTON BROWSER



ISSUE NO 247

www.bourtonbrowser.co.uk

November 2019

DIARY DATES

- 1st Coffee Morning, in aid of the Poppy Appeal, **StLC**, 10am-12noon.
- 6th Parish Council Meeting, **GMCC**, 7pm, all residents welcome.
- 8th Friday Club Over 60s, **BCH**, 2.30pm, 810233.
- 8th & every Friday, Moore Lunch Club, 10am-1.30pm, **GMCC**, transport provided. 824338.
- 8th PrettySimpleSongs, local live music, 8pm, Bourton Vale Cricket Club Pavilion, Free entry, Details from Silvi 07504 068262.
- 12th WI, **VH**, 7pm, AGM, followed by "Flower Arranging" by Sarah Isaac.
- 13th Gardening Club **BCH**, 7.30pm, "The Cotswold Goodlife Company—Chickens & Bees" by Anthony Allen. Comp: Hips, berries & nuts. Visitors welcome. See p 6.
- 13th & 27th North Cotswolds Memory Club, 10.30-2.30, **MC**, Support & activities. To discuss free Carer Respite call 07971 929258.
- 13th Irene's Knitting Circle, Coffee Morning, **GMCC**, 10-Noon, 798718.
- 16th Tayler & Fletcher, Auction Sale, **NCS**, 10am. View Fri. 8am-6pm. www.taylerandfletcher.co.uk 821666.
- 18th Rural Cinema, "Wild Rose", 12A Drama, Jessie Buckley, Julie Walters, Matt Costello. **VH**, 2.30pm & 7.30pm. Refreshments from 2pm & 7pm, tickets £3 on the door.
- 20th History Society, **BCH**, 7.30pm.
- 24th Farmers Market, **BLH** car park, GL54 2AR. Morning.

Continued on page 2 column 1

Parish Council Notes

Parish Council Notes

Council Meeting 2nd October 2019

Xmas Tree: Volunteers are required to assist with putting the metal base together for the Xmas tree which will then go into the river. This will take place on Saturday 16th November 2019 from 8.00 am. If anyone is interested in helping please contact Vanessa Oliveri, Parish Clerk on the details over page.

Parking Enforcement: The Parish Council are awaiting figures to provide additional hours for the Civil Enforcement Officer to be present in the village.

Rissington Road Lay-by: The Parish Council are waiting information from GCC with regard to filling in the lay-by area on the Rissington Road.

Metal Railings for the village green: The Parish Council has decided to put on-hold the decision to part fence off the village green in the winter months with temporary metal railings. This is because CDC are looking into providing compactable bins for the village green which will crush the litter.

Letter Box at the Village Post Office: The letter box at the Village Post Office is back in operation with twice daily collections as usual.

Speeding in Moore Road: It had been reported to the Parish Council that speeding is occurring in Moore Road, two car incidents being reported within a week. The police had been asked to undertake a speed watch in this area.

Litter: CDC has provided additional litter bins on the village green in the summer period. The Parish Council has made a decision to take notices to the fast food outlets in the village prompting customers to take their fast food containers back to point of purchase. This should assist in reducing the vast amount of rubbish on the village green. Notices will be applied to the village green bins with the same message.

Youth Sessions at the Cricket Club: The youth sessions on a Monday evening at the Cricket Club are going well with attendance numbers picking up.

Winter Weather Policy: Bourton-on-the-Water's Parish Council's winter weather policy covers who is responsible for certain areas and how and when to use the grit and equipment.

Glos C.C. is responsible for the highways in Meadow Way from the entrance to Industrial Estate to junction with Station Road, Station Road from traffic lights at A429 to junction with High Street, Moore Road, Lansdowne, High Street and Rissington Road.

Parish Council is responsible for the George Moore Community Centre and the pedestrian bridges across the River Windrush.

Continued on page 2 column 2

Baptist Church Hall = **BCH**
British Legion Hall = **BLH**
George Moore Community Centre = **GMCC**
Jubilee Lodge = **JL** Market Close = **MC**
North Cotswold Sale Room = **NCS**
St Lawrence Church = **StLC**
Victoria Hall = **VH**

The *Bourton Browser* is run by volunteers & delivered monthly FREE to every household in the Village.

Go to the "Get in Touch" tab and then complete the contact form to send questions, articles (max.300 words), adverts & event details to the team.

Copyright © Bourton Browser 2018

The DEADLINE for Adverts & Articles for the December 2019 edition, is **Midday 13th November**

K R ELECTRICAL LTD
- ELECTRICAL CONTRACTORS -
Based in the heart of the Cotswolds

All Electrical Work Undertaken Established Over 30 Years

Small & Large Jobs
Including:

Security Lighting • New Sockets • Rewires
Landlord Certificates • Periodic Tests • PAT Testing
Downlights • Fault Finding • New Installations
Alarms • CCTV • Electric Gates • Access Control

Commercial & Domestic Work

 **Contact us for a free quotation:**
Office: 01451 821236 (7.30pm - 5pm)
Mobile: 07860 438591

www.kr-electrical-products.co.uk
Unit 12b Bourton Business Park, Bourton-on-the-Water, GL54 2HQ

Michelbacher Cycles

Bike Servicing
EBike's built for you.



Before and After
Custom built ebike use your existing cycle

- Free health check for your bicycle
- First class servicing at affordable rates
- Servicing built around the needs of your bike
- Free expert aftercare advice

Free Delivery & Collection

To Bourton and surrounding Villages

- Chain wear
- Brake operation and pad wear
- Bearing operation of wheels and Bottom bracket
- Condition of tyres

6 The Paddocks
Bourton on the Water
GL54 2LS
01451 810192 • 07788282755
Email: john@michelbachercycles.com
www.michelbachercycles.com

EST. CHELTENHAM 1940

BADHAM PHARMACY

NEW PHARMACY IN UPPER RISSINGTON!

 **Badham Pharmacy**
Unit 2, The Village Square
Upper Rissington
GL54 2FL
TEL: 01451 828226

A new community pharmacy open six days a week

Monday - Friday 9am - 6pm
Saturday 9am - 12:30pm

ASK ABOUT FREE DELIVERY

 **Badham Pharmacy**
11 The Square
Stow on the Wold
GL54 1BQ
TEL: 01451 830623

Stow Pharmacy, also open six days a week

Monday - Friday 9am - 6pm
Saturday 9am - 5pm

ASK ABOUT MINOR AILMENTS

www.badhampharmacy.co.uk

continued from Page 1, column 1

- 24th Kate's home Nursing Table Top/
Craft Sale, **BLH**, 9am-1pm. Free
entry. Table bookings 07867121122
Lynda.Hicks58@gmail.com
- 26th Windrush Carers Support Group,
7pm, **MC**, Barbara Newstead 821523.
- 27th U3A, **BLH**, Coffee 10-10.30am.
Speaker 10.45am "Tewkesbury
Banners" by Steve Goodchild. Visi-
tors welcome. See page 5.
- 28th Bourton Primary School Christmas
Fayre, 5-7pm. See page 9.
- 29th & 1st Dec. Parlane International
Sale, see page 9 for details.
- Visit: www.bourtonbrowser.co.uk**
to see events throughout 2019/20

Santa's Magical Grotto 2019

Jim and Helen with the grotto team are
pleased to confirm the dates that Santa
will be visiting Clapton this year. Satur-
day 7th and Sunday 8th December. Sat-
urday 14th and Sunday 15th December.
Saturday 21st and Sunday 22nd Decem-
ber. Booking can be made on line at
www.santasmagicalgrotto.org from
Monday 21st October. We are again
continuing to support Children's Mental
Health and well being in our local area.

On Tuesday 3rd December we will be
holding our usual "Never Too Old To
Meet Santa, Adult Day". No
need to book, just come
along anytime be-
tween 10am and
1pm. Or 2 and 5pm.
Hope to see you
there.



The team at Santa's Magical Grotto

continued from Page 1, column 2

The grit bins are initially filled up by
GCC prior to the winter period. The
Parish Council re-fill the grit bins for
the rest of the winter. The Council do
not provide grit for use on private
land - this is the responsibility of
each property/land owner. The Coun-
cil will provide local residents, busi-
nesses and other authorities with
bags of grit to be used on public foot-
paths only. Shop keepers in the vil-
lage are urged to clear the access
into their shops to help keep custom-
ers safe whilst entering and leaving
their premises.

Dementia Friendly Activities in Bourton

Did you know that the North Cotswold Memory Cafe takes place on the first Friday of every month at The George Moore Community Centre from 10.30am-12.30pm? The Memory Cafe is run by the Alzheimer's Society for people with dementia and their carers, family & friends. Call 01452 525222 for more details. Also, the North Cotswold Memory Club is held on the 2nd & 4th Wednesdays of each month in The Lounge at Market Close from 10.30am-2.30pm. The Memory Club is run by Cotswold Friends to support people affected by memory difficulties. Call 01608 652019 for further information.

Next Parish Council Meeting:
Wednesday 6th November 2019 at
7.00pm in The George Moore Com-
munity Centre.

Tel: 01451 820712
clerk@bourtononthewaterpc.org.uk
www.bourtononthewaterpc.org.uk



Bourton on the Water & District Probud.

The talk in October, 'The Cotswold Navy' followed by, 'Queen Mary would not Approve' for which the ladies joined us, proved to be fascinating. Events such as a fun day of skittles, followed by a visit with members and guests to the Bletchley Park proved to be very enjoyable. November will cast us back into the days of the cold war with a talk on 'The Stasi' followed by a step into another world with 'Sentenced to Beyond the Seas'

We would love to have you come and join us at our Probud meetings. Why not add your name to our list of members. You can call our secretary Chris on 01451 820787 or come as a guest of one of our members. ***Hope to see you there.

Tom Constant

We Need Volunteers!

We are looking for volunteers to join us in both our Bourton and Stow Charity shops. Do you have a few hours a week you could spare? We welcome volunteers from all ages and backgrounds to come and help us make a real contribution in the community, helping raise vital funds to support local children with cancer and their families.

To join our friendly team or if you have any questions, please contact Colin or Kirsty on 01451 820496 or email info@sampilchertrust.org.uk

VJ COLLETT

BOURTON ON THE WATER

ALL MAKES
SERVICING AND REPAIRS

AIR CONDITIONING

DIGITAL FOUR WHEEL
ALIGNMENT

TYRES, EXHAUSTS AND
BATTERIES

MOT

DIAGNOSTICS

01451 820366

WWW.VJCOLLETT.CO.UK

North Cotswold's Libraries

North Cotswolds libraries, i.e. Stow on the Wold, Bourton-on-the-Water, Moreton-in-Marsh and Chipping Campden won the David Vaisey competition and the results were announced on Sunday, 6th October at the Cheltenham Literature Festival.

This is an initiative to encourage community projects from the libraries in Gloucestershire. Our project is the Little Library which is a beautiful house made by Men in Sheds which contains new books and there are three of them available to those who visit the Food Banks at Moreton, Bourton and Chipping Campden. They can take a book and there is no pressure to return it, there are books for both adults and children including practical books such as cooking on a budget. The books are purchased through donators that the library has approached.

The prize money was £5,000.00 towards the project and was presented by Chris Riddell, author and illustrator.

Sue John

IN PAIN???

TRY 'THE BACK WOMAN' AT BOURTON!

- McTimoney Chiropractor - 1-19 Years Experience
- Medical Acupuncture / Scenar Pain Relief Therapy
- Equine / Animal Chiropractor
- Registered with The General Chiropractic Council

Tina Hamer, dc,mmca,amc,mbmas

Gentle and effective treatment for a variety of conditions

Bourton and Cheltenham Clinics

Tel: 01451 509125 / 07884 312559

E: tina.hamer@sky.com www.bourtonchiropractor.co.uk



High Bridge Jewellers



TOPAZ, November's Birthstone

Topaz is found in many colours including white, brown, pink and green. The most prized is a magnificent orange with pink undertones. "Blue" once rare is now common due to our ability to enhance the colour. The Egyptians and Romans believed Topaz protected and healed.

Repairs Undertaken In Our On-Site Workshop

High Street, Bourton-on-the-Water,

Cheltenham. Glos GL54 2AQ

tel 01451 810928 - sales@bowgoldsmiths.co.uk

Opening Times: 9.30am-5.00pm, Mon - Sat

10.00am-5.00pm Sundays

Bourton-on-the-Water Women's Institute

theWI
INSPIRING WOMEN

Paracise was the subject of the talk at our September meeting when Lesley Roberts explained the benefits of this form of exercise and got her audience trying it out for themselves. The October meeting was a social evening when we attempted, amidst a lot of hilarity, to answer the questions to a couple of quizzes – both food related. The answers to one were more general but the other was based on the names of chocolates and sweets. 41 questions with the answer to each being the name of either a past or present sweet or chocolate.

On 12th November we have our Annual General Meeting starting at 7.00 p.m. and this will be followed by a demonstration of Flower Arranging by Sarah Isaac. We meet at the Victoria Hall in the evening of the second Tuesday of the month so do come along and join us.

Janet Randall

HILL-TOP JOINERY

Specialising in bespoke kitchens,
wardrobes, libraries and home offices



Quality built general joinery -
stairs, windows, doors

We can make your ideas a reality

Tel: Alan Minchin

01451 822295 or 07808 960803

Fax: 01451 810486

www.eckersleyandminchin.co.uk/

(Trade enquiries also welcome)

OUT AND ABOUT in November

- 5th Windrush, Wardens Way Circular Walk - Moderate. Start: 10am Winchcombe Back lane car park (£1 all day) OS Map ref: SP 024 285. . Bring a packed lunch. 4.5 hours: 8 miles. Details www.cotswoldsaonb.org.uk 01451 862000.
- 5th FSC Fireworks Display & Bonfire The Fire Service College, Moreton-in-Marsh, GL56 0RH. 6pm-8.30pm. Free entry - donations to local charities.
- 9th Nalbinding Workshop— single needle knitting, Chedworth Roman Villa, NT, Yarnworth GL54 3LJ, £45 includes lunch & materials, booking essential 03442491895.
- 12th "Power around Guiting" Circular walk Start: 10am Guiting Power village car park (donation) OS Map ref: SP 094 246. 3 hours: 6 miles. Moderate. Bring drinks and a snack. Details www.cotswoldsaonb.org.uk 01451 862000.
- 14th-17th Living Crafts for Christmas, Blenheim Palace, Woodstock, OX20 1PP www.blenheimpalace.com 01993 810530.
- 14th & 22nd Forest School for Tots at Batsford Arboretum, 10.30am-12pm. Children can enjoy bug hunting, creating mud pies, craft activities, storytime & more! Suitable for preschoolers. £5 per child. Places must be booked in advance, to book call 01386 701441
- 15th Great Rissington History Society "Witchfynder— an illustrated talk by John Putley. 2.30pm. Venue Great Rissington Club. Visitors Welcome £3.50 to include refreshments. 01451 820233 / spsb@hotmail.co.uk
- 16th Naunton Christmas Fair, 11am-3pm Village Hall GL54 3AS. Local handcrafted gifts. Enjoy a brunch or light lunch Tea, coffee and cake. Free entry and off-road parking.
- 16th Flat Packed Theatre presents "Hyde & Seek", Westcote Village Hall, 7.30pm. Thriller, innovative technical wizardry, based on 'The Strange Tale of Dr Jekyll & Mr Hyde'. £12.50, 01993 831196, westcote.booking@gmail.com
- 22nd—1st January Christmas Market, Illuminated Lights Trail & Festive Palace Experience, Blenheim Palace, Woodstock, OX20 1PP www.blenheimpalace.com 01993 810530.
- 23rd Great Rissington Village Market, 10am—Noon, Great Rissington Club House, 822285.
- 24th Moreton-in-Marsh 7th Christmas Market from 9am. 50+ stalls in High Street, Christmas gifts & food. Charity & Local Organisation stalls in the Redesdale Hall. Local singers & carol singing by the local schools. Father Christmas.
- 28th, 29th & 30th The Wychwood Players' present "Laburnum Grove" by J B Priestley. 7.30pm, New Beaconsfield Hall, Shipton under Wychwood OX7 6BQ. Ticket information please visit: www.wychwoodplayers.com
- 28th-15th December, Bath Christmas Market, Mon, Tues & Wed:10am—7pm, Thurs, Fri & Sat:10am—8pmSun:10am—6pm. www.bathchristmasmarket.co.uk
- 29th-30th Witney Wonderland Open weekend. 29th from 5pm & 30th 11am-4pm Live music, roaming entertainers, Spectacular light installations & Christmas Trees, Christmas Food & Arts & Crafts. W: www.witneywonderland.co.uk
- 30th, 1, 6-8, 12-23, 27-30 December, Spectacle of Light at Sudeley Castle, Winchcombe, Glos. GL54 5JD, from 4.45pm, Tickets/Admission :Book in advance & save 15%, 01242 705555.

Visitor Information Centre 01451 820211
info@visitbourton.com

- 30th Nov & 1st Dec Visit Santa in his magical grotto at Batsford Arboretum! Timed slots will be available between 10am-4pm, £6 per child. To book, call 01386 701441.
- 30th Nov to 5th Jan Join the Big Batsford Elf Hunt! Santa's helpers have gone missing and they're all hiding in the Arboretum — find them to win a prize! £2.50 per child, plus Arboretum admission fee. Visit www.batsarb.co.uk

FOR SALE / WANTED ITEMS

To advertise items such as Household items, Toys, Garden Equipment etc, complete the contact form on the "Get in Touch" tab. The advert should be no more than 15 words. It must be received **before 12 noon on the 13th of the month**. No commercial adverts accepted for this section.

For Sale 2 Button back single headboards, £10 each.
07890 055680

For Sale
Garmin 3597LMT Sat Nav, including leads, travel pouch, manual & box, £40 ONO
822431

For Sale
Zanussi Table Top Fridge, 37 Litre + icebox, 20.5" H, 20.5"W, 22.5" D. Condition as new. £35.
820075 or 07702 045115

For Sale
Single divan bed 2'6", in very good condition, used as spare bed.
£25, 822431

FOR SALE American King Size Bed, solid hardwood, 100" L (incl 16" headboard) x 80" W, with 15" mattress, box springs, headboard storage unit, 2 end tables. Excellent condition. £790 photos available.
01451 509211 07368 431102

For Sale
Large bag of Bean Bag filling £5. 2 full length Dressing Gowns (M), 1 towelling, 1 quilted, £10 each. 820325

For Sale
G-PLAN 7 Drawer light teak CHEST OF DRAWERS, 59" W, 27"H, 18" D. Excellent condition £40. 820075 or 07702 045115

For Sale
BOSCH 2500W 3IN 1 LEAF VACUUM/BLOWER/SHREDDER. Excellent condition
£30.
820075 or 07702045115

For Sale
PAIR of M & S TABLE LAMPS with SHADES. Pale pink china bases. 16" high, good condition. £15.
820075 or 07702045115

For Sale
6' x 4' CHINESE RUG. Lots of different colours on a pale pink background. £25.
820075 or 07702045115

For Sale 12 Piece CHINA DINNER SERVICE. White with small dark green boarder. 50 pieces in total.
£35. 820075 or 07702045115

For Sale
12 Piece CHINA TEA SERVICE. White with small dark green boarder. 40 pieces in total.
£25.820075 or 07702045115

For Sale
Pine Coffee Table, with shelving underneath, 4' x 2'.
£20. 07523 565049

For Sale
Double drawer divan bed, orthopaedic mattress, ornate headboard. VGC. £100.
07890 055680

For Sale
Bath/ Shower Screen, 5' x 2'8", Aluminium fittings, Excellent condition, £20,
820619

Beautylicious

George Moore Community Centre, Moore Rd, Bourton-on-the-Water.
07963 332308
www.beautylicious-bourton.com
beautyliciousbourton@gmail.com



BEAUTYLICIOUS HAS EXPANDED!

- a Large Nail & Brow Bar with 2 luxury pedicure spas,
 - 2 Large treatment rooms (including a Double room).
 - A Spray tan room.
 - Now offering IPL Permanent Hair Reduction
- We offer a wide range of products and services to cater for all.

The Lady Painters

"Highly Recommended"

High Quality Decorators

01451 850267

07450 036 855

theladypainters@hotmail.com

Call Tracy for a FREE Quote



Bourton & District U3A

Learn, Laugh & Live!



If you are one of the 20+ new members who have recently joined us, a very warm welcome to you and I hope to see you at the New Members meeting on 5th November. You should have received an invitation with details of where and when, please do RSVP if you have not already done so. If you have not received an invitation and have joined in the last couple of months please contact me.

A final reminder to members wishing to attend the "Christmas Cracker", our Christmas Social on 11th December, to RSVP to Steve and Myra Ford by 15th November (contact details in your newsletters). This event is usually over subscribed and we can only take a certain number in the hall, so first come first served! Those Groups and or individuals who would like to perform at the Cracker also need to contact Steve and Myra ASAP.

My apologies for the misprint regarding our speaker last month. If you were hoping to hear about "The Tewkesbury banners" it will be this month, see Diary Dates for details.

If you are retired or semi retired why not come along to our meeting to see how the U3A can brighten your days? We have approx 40 different Interest Groups, see our website for the full list. We welcome men and women, couples and singles. We cover Moreton-in-Marsh, Stow-on-the-Wold, Bourton-on-the-Water and all the smaller villages in between. We are non-political and non-religious. If you are new to the area, newly retired or newly alone it is a great way to make friends and get involved with the community.

Susan Dodd, 01451 822431,
chairperson@bandu3a.org.uk
www.u3asites.org.uk/bourton



Bourton Browser Team News

If you would like to become part of our volunteer team on an occasional basis we have an interesting opportunity on offer. We would like to find a person, or couple, who would be interested in becoming "Relief Distributors". The Distributors receive the Browsers from the printer, batch them up and deliver those batches to the street deliverers. If you would be interested in learning more please contact Rob and Christine Gorton on 01451 810724.

All our distributors, proof readers, deliverers and relief deliverers, should have received an invitation to our Christmas Party on 18th December, and we remind them to please RSVP as soon as possible. This event is arranged as a "thank you" for all their hard work throughout the year.

For details of the increases to our advertising rates from January 2020 see the advertising page of our website. We are already fully booked for advertising spaces for the whole of 2020 but we do keep a waiting list and occasionally spaces become available at short notice. If you would like to be added to the list for any months please contact us.

We would like to receive the speaker programmes for 2020 from any community groups who would like regular entries in our Diary Dates Section. We would also welcome any 2020 entries for our on-line village diary, available via our website. Please email to team@bourtonbrowser.co.uk You can read extra articles and see more photographs on our website, as well as checking the diary page for information about Bourton events in the coming months.

NB: the deadline for any contributions for the December Bourton Browser will be 12 Noon, on Wednesday 13th November, 2 days earlier than normal.

The Bourton Browser Team www.bourtonbrowser.co.uk

Let us help with all your travel arrangements
Flights – Hotels – Cruises – Transfers – Car Hire

Personal advice and bookings at a time
to suit you

100% financially secure

Call your local Travel Counsellor in Bourton
Richard Church 01451 670000

travel counsellors



An evening of Opera, Music Theatre and Popular Song

performed by international tenor **Richard Coxon**
and concert pianist **David Harrington**.

Friday 20th December, 7.30pm

St Lawrence's church, Bourton-on-the-water

Tickets available at Bourton-on-the-water tourist

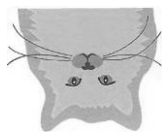
Information centre 01451 820211

and info@richardcoxon.co.uk

£14 includes a mulled wine and a minced pie

All proceeds to cancer research

Felines & Friends



Pet Sitters & Dog Walkers
Caring for your Pets
Since 1996

Phone : 07803016993
Or 01451 821421

Email :
felinesandfriends@talktalk.net

Daily Dog Walks
Cat & small pet home
visiting service
Doggie Day Care
Small dog boarding
House sitting
References available



AIRPORT TRANSFERS

Bourton Shuttle

**WE OFFER PRIVATE
TRANSFERS TO HEATHROW (&
OTHER AIRPORTS & CRUISE
TERMINALS) IN OUR CLEAN &
COMFORTABLE VEHICLES. WE
ARE PROFESSIONAL,
FRIENDLY, & EXTREMELY
RELIABLE.**

Please call or email us.

INFO@WITNEYSHUTTLE.COM
FREEPHONE: 0800 043 4633
or 01993 705993

**Stow
physio
at bourton**

**For a friendly,
professional
physiotherapy service**

- Sports Injuries
- Back/neck pain
- Neurology
- Post-surgery
- Women's health
- Pilates

and all general physiotherapy

01451 822660

Lucy Walmsley | James Clapp | Kate Badger

www.stowphysio.com | info@stowphysio.com Hawthorne

Court, Bourton Industrial Park,

Bourton-on-the-Water, GL54 2NQ



Cotswold Fosseway Lions

The club continues its fortnightly run to take donated items from the Westwoods Centre to the North Cotswold Food Bank at Guiting Power. A surprise greeted us on 17th September with a large donation of food items from the film crew that had been in Northleach filming "This Country", which weighed a staggering 282kgs.

Thanks to all those that attended the Quiz Night in the Cotswold Hall 4th October and we hope that you all enjoyed the questions posed by Quizmaster Darren Midwinter, who we think did a wonderful job again. Those attending were asked to nominate a local charity that would benefit from the night and the overwhelming choice was Kate's Home Nursing. Due to the number of nominations it received we shall be donating £150, which was approximately 75% of the night's proceeds. A record has been kept of all the other charities that were nominated and we will look to support some of them, where we can, in the future.

With Christmas just 2 months away, a donation to Cheltenham Open Doors of £200 was agreed at our last meeting. Over Christmas they run a 24-hour shelter at St Luke's Church Hall for those who might otherwise spend the season alone. Also agreed at this meeting was to assist the Town Council with the funding required to install a 4th defibrillator within the town.

Plans to hold Christmas Hamper Draws are progressing with around 6 local establishments willing to participate. Part of the proceeds from each hamper draw will be donated to a charity chosen by that establishment. We are looking to fill these hampers with locally branded goods and would welcome donations from local companies willing to assist.

You are welcome to come and find out what our Lions Club is all about. Come and join us for coffee before our meetings at the Cotswold Hall, on the second Tuesday in the month from 7.40pm., or telephone 01283 831601 for information. You will receive a warm welcome.

Corina Sherman

Bourton Vale Gardening Club

"A Garden is a friend you can visit anytime"

Autumn is here, with shorter days and cooler nights, deciduous trees and shrubs are putting on a show. As the spring and summer greens fade, shades of russet, red, purple, orange, yellow and brown are revealed. The hedgerows are bursting with wild rose hips and bumper crops of Blackberries. By only gentle tidying in your garden, leaving piles of leaves for hibernating hedgehogs, frogs and insects, we can all do a little as gardeners to collectively make a difference.

Autumn is the time to plant bulbs for spring, ready for early pollinators and to plant your own hedge, creating a place to shelter, forage and nest for the birds and insects and creatures that bring a garden alive.

Planting bare root hedges from November to March, the dormant season, is the cheapest way to create any hedge. Even a tiny hedge with edible berries and spring blossom should bring the beautiful pollinators and later birds to feast on the berries.

If you burn leaves or add to bonfires, please double check before lighting, as one of our beleaguered hedgehogs may have sought out that very spot to begin their winter hibernation. Storing those fallen leaves separately can make a great peat free compost, if left to break down for a couple of years.

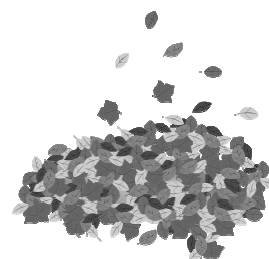
Our talk this month, on 13th November is all about bringing even more life into your garden. Anthony Allen from the Cotswold Goodlife Company is coming to entertain us on keeping Chickens and Beekeeping.

Lu Webb won this month's competition: Seed Head.

Next month's competition is the seasonal - Hips, Berries and Nuts, with lots of hedgerows to be inspired by.

Happy Gardening and Wildlife Watching!

Julie Huckle



VOLUNTEER WITH GIRLGUIDING

Girlguiding is the leading charity for girls and young women in the UK, with over 500,000 members.

Thanks to the dedication and support of over 100,000 amazing volunteers, we are active in every part of the UK, giving girls and young women a space where they can be themselves, have fun, build brilliant friendships, gain valuable life skills and make a positive difference to their lives and their communities.

We build girls' confidence and raise their aspirations. We give them the chance to discover their full potential and encourage them to be a powerful force for good.

We give them a space to have fun.

We run Rainbows (5-7 yrs), Brownies (7-10 yrs), Guides (10-14 yrs) and Rangers (14-18 yrs)

Interested in Volunteering ?

There are a myriad of ways you can get involved.

Our volunteering opportunities can fit around your skills, commitments and in-

terests. You don't need to have been involved in Guiding before to make a big difference and find a role that's perfect for you.

What Volunteering is All About

Volunteering with us isn't just about campfires and helping girls to get their next badge – although those are special moments that we all share.

It's about empowering girls and giving them new experiences.

It's about being a role model and helping girls to realise their full potential.

It's sharing and developing your skills.

VOLUNTEER AND MAKE A DIFFERENCE

Your professional and personal experience, a specific skill or simply your enthusiasm – you have so much to share with girls and young women in Guiding. It's time to get involved.

Register your interest at www.girlguiding.org.uk

Or find out more at cotswoldn@girlguidingglos.org.uk

Daphne Walton

St Lawrence's, Bourton on the Water – all welcome

contact Rev Rowena King, 821282, revrowena@gmail.com
www.bourtonparishchurch.co.uk

10th November - Remembrance Sunday

– 10:45am to proceed to the war memorial and following at the Baptist Church for the service.

Join us at 11am every Sunday.

(1st Sun All Age, Communion 2nd and 4th, Morning worship 3rd)

Light Club – 2nd and 4th Sundays - for Primary School-aged children, term-time only
Other Sunday Services

8am Communion (BCP) on 2nd & 4th Sundays

6pm Communion on 1st & 3rd Sundays

Wednesday Communion **10am** 1st and 3rd Wednesdays

St James', Clapton on the Hill **9:30am** 1st(BCP HC) & 3rd (am Worship) Sunday

Breakfast Church 9am Saturday 9th November

Food, craft, songs, prayers and stories for all ages

Bumblebeez every Thursday, 9.00 – 11.00am, fun for 0-5s, chat & coffee for carers

BOURTON-ON-THE-WATER BAPTIST CHURCH

A warm welcome to all - we would love to see you at any of our activities!

Sunday Services 10:30 am and 6:00 pm

Noah's Ark Toddlers Group Mon 9:30am – 11:30 in term time

Women's Meeting Weds 2:45 pm (2nd & 4th of month in church hall)

Men's Meeting Thurs 8:00pm (2nd & 4th of month at Manse)

Open 4U social club for all ages Thurs 10 am—4pm (church hall)

Youth Club pizza, games and crafts Fri 5:00—6.30pm (age 8 to 12 in hall)

Coffee Morning Sat 10:00—12noon (2nd of month in hall)

Revd Ian Fowler Manse: 59 Roman Way, Bourton on the Water

Tel Church Office 01451 824225 or 07906 518316

www.bourtonbaptist.co.uk minister@bourtonbaptist.co.uk

www.facebook.com/groups/BourtonBaptistChurch/

Pip Duckmanton (Youth Worker) Tel: 07796 346781



**ROMAN CATHOLIC PARISH OF
OUR LADY & ST. KENELM, STOW ON THE
WOLD, GL54 1DR with**

**OUR LADY, HELP OF CHRISTIANS,
BOURTON-ON-THE-WATER, GL54 2ER.**

Priest: **Fr. Stephen Lambert** 07836

384932 Email: sulharcomb@aol.com

Parish website: stow-bourtoncatholic.net

WEEK END MASSES: Saturday evenings:

Vigil Mass 6 pm Bourton-on-the-Water,
with hymns.

Sunday morning: **9 am Mass Stow on
the Wold,** with hymns and musical set-
ting.

WEEKDAY MASSES: Mon, Wed, Fri, **9 am
Stow.** Tue, Thur, **10 am Bourton.** (Always
check web-site for changes)

NOTICE BOARD

Fri. 1st Nov. **7 pm All Saints' Day Mass** with
hymns and music (Stow)

Sat 2nd Nov. 9 am. **All Souls' Day Requiem
Mass** (Stow)

Sun 10th Nov. 9 am **Requiem Mass for those
who died in War** (Remembrance Sunday)

Sat 23rd Nov. 6 pm **Vigil Mass of Christ the
King** (Bourton)

Sun 24th Nov. 9 am **Mass of Christ the King**
with hymns and music (Stow). Youth Sunday.

Adult Baptisms, Confirmation and First Com-
munion candidates for 2020. Contact Fr.
Stephen if you wish to enrol or enrol your
child.

QUAKERS

The Religious Society of Friends
Every Sunday 11am

at The Friends Meeting House,
Pytt Lane, Burford

Enquiries welcome Howard Crook
01451 810447.

To request a free info pack,
email: outreach@quaker.org.uk

HIRE of HALLS

Baden Powell Hall

lettingsbph@gmail.com

Baptist Church Hall

Yvonne Finch 01451 820175

Bourton Cricket Clubhouse

Kirsten Morgan 07788 137838

British Legion Hall Branch Office 01451
824303 250 standing, 150 seated

George Moore Community Centre

Jo Herbert 01451820712

clerk@bourtononthewaterpc.org.uk

Victoria Hall

Annette Lane 01451821039

Wyck Rissington Village Hall

Judith Wheeler 01451 821094

Cotswold Hall, Northleach

Jacques Astic 01451 860366

Bourton Farmers Market

Jeremy Benson 01451 844134

For The Younger Generation

Hello Young Bourtonians,
November is the month when we remember Guy Fawkes and the Gunpowder Plot. As the weather is usually pretty miserable at this time of year it is always nice to see the sky lit up with bright colours and sparkles. **But remember** always treat fireworks with respect and stay safe.

Have a Natty November!

Christine Sub Editor



Bourton School of Gymnastics Club

After a hardworking summer, Gymnasts at The Gym Centre took part in the Gloucestershire Apparatus Levels Championships on 15th September 2019 at Fromeside Gymnastics Club. It was a tough day with a high level of competition. The Gym Centre came away with some fantastic results with 3 gymnasts who started training at Bourton placing well!



Jessica Havill placed 5th in the Level 5 Juniors, along with her teammate Sophie Havill who placed 1st. Hannah Rowe also placed 1st in the Level 5 Senior section.

As a result of the competition, Martin and Kerwen Collett are proud to announce that both Sophie Havill and Hannah Rowe will be representing their county in a coming competition in October! Sophie will be part of the Level 5 Under 11 team along with her teammate Tallulah Cole, and Hannah Rowe will be representing Level 5 Over 11s.



We are extremely excited to see what the next few months hold for the gymnasts and for us as a club. Watch this space to find out what happens next!

Did you know we run an after school club at The Cotswold School for pupils? Get in touch now to find out more.

Email – gnortoncsg@outlook.com

Tel – 07870624180 / 01451 820015

Gabby Norton



THE COTSWOLD SCHOOL

The pursuit of academic excellence and individual achievement within a caring community

Celebrating 30 years of outstanding teaching and learning

We held our annual Prize Giving Evening on Thursday 12th September 2019 and we welcomed Mark Cummings, as our guest speaker.



Mark Cummings is on BBC Radio Gloucestershire every weekday morning bringing a lively, informative and entertaining mix of news, sport

and chat to the airwaves. He interviewed staff prior to the event and then offered a fun and interactive 'hands-up' question time to the audience! To all the students who received an award—WELL DONE! Of special note are the following:

- Callum Woolley who was the recipient of the new Work Experience Award, sponsored by Midcounties Co-operative.
- Barney Hotten who was awarded the Ann Holland Award for outstanding achievement at GCSE.
- Emma Parker who received the Gaynor Didcote Prize for her wonderful A Level results. All should be proud of their awards.

It was also a privilege that the School honoured Rachel Godfrey with an Exceptional Contribution Award in recognition of her years of service to the school PTA.

Music was a big part of the evening with Reuben West, Amara Bochmann and Alba Espallardo Esteban providing the musical items for us. Staff, students and parents then enjoyed a delicious buffet courtesy of the catering team.



Rachel Godfrey

Will Morgan, Principal

Local Groups and Organisations for the YOUNGER GENERATION

Army Cadets	IJ Haines	850758 after 6.30pm
Beavers	Tim Hemming	810996
	bourtonbeavers@gmail.com	
Bell Ringers, BoW	Anne Clark	820759
Bourton Gymnastic Club	Martin Collett	820015 /07870624180
Bourton Road Runners Juniors	Richard Buffton	831733 / 824379
B'n Out of School Club (OSC)		07950 048066
B'n Rovers Youth	Deb Hunt	810966
Bourton Vale Cricket Club	Lucy Gillespie	
	craiglucygillespie@yahoo.com	
B'n Vale Equestrian Centre	Leanne Launchbury	821101
Bourton Vale Tennis Club	James Hilltout	07946 397186
	www.bourtontennisclub.org	
Brownies	Kathleen Punchard	824459
Bumblebeez babies & pre-school tots	Rowena King	821282
Canoe Club	Oliver Robbins	07890318079

Guides		07843282262
Cubs	Lynn Dartnell	01451 810732
Hockey	Tracy Dixon	07813187933
Noah's Ark Toddlers Group	Ian Fowler	07906518316
Pre-School	Julie Cooper	07950 048066
Pre-School Jujitsu	Andy or Hayley	07951587398
Pre-School Gymnastics	Caroline Ardron	07793949198
Pre-School Friday Club	Gina Davis	07515866358
Pre School Music Class	Sian Ferris	01242 890200
Rascals, Babies & Toddlers	Veronika Bosher	01451 824257
Rainbows		07941502222
Scouts/Explorer Scouts	Scott & Lynn Dartnell	810332
	Bourton-scouts@talktalk.net	
Taekwon-do	Lee Chapman	01285 640500
Wiggle	Maria Blundell-Paethorpe	07732754431
Youth Club	Pip Duckmanton	07796346781

Bourton Primary School

Friends of Bourton Primary (FOBS) are a non-profit parent/teacher association who raise funds for a range of projects across all the school years at Bourton Primary Academy. We are hosting our annual fundraising Christmas Fair on Thursday 28th November. Please come along and browse our crafting stalls and the scholastic book fair, play some games and generally get in the festive spirit. Entrance is free and open to all. We still have a few spaces left for stall holders, so if you are interested then please do get in touch by email to :

friendsofbourtonschool@gmail.com or call Claire on 07974 569597 for more information.

Looking forward to hearing from you soon.

Friends of Bourton School



CHRISTMAS

FAYRE

THURSDAY 28TH NOVEMBER
5-7PM - IN THE SCHOOL HALL
BOURTON PRIMARY ACADEMY

● ● ●

COME ALONG FOR SOME CHRISTMAS
SHOPPING & FUN FOR ALL THE FAMILY!

GIFT STALLS,
TOMBOLA

PRESENT ROOM,
ADVENT
CALENDAR

GAMES, RAFFLE
& MORE

ALL PROFITS TOWARDS FRIENDS OF BOURTON SCHOOL

STONES

Traditional
handcarved
sandblasted
memorials

carving commissions
undertaken

Peter Shaw BA HONS, DIP.LA

Mobile **07974 577924**
Workshop Tel/Fax **01451 821414**
Tel **01451 821671**
Email **petershaw1951@btconnect.com**
www.stonesmemorials.co.uk
Bourton on the Water

Parlane

SHOWROOM CLEARANCE

S A L E

Home accessories, vases, decorations, photo frames,
candles and a whole lot more!

FRIDAY 29TH NOVEMBER | 12-5PM
SUNDAY 1ST DECEMBER | 10-3PM

Bring a bag if you can! Cash or card only. Private sales
only, no trade or re-sale. Please park responsibly.

PARLANE INTERNATIONAL LTD.
Unit J, Bourton Ind Park, Bourton-on-the-Water, Glos GL54 2LZ
Tel: 01451 812700

One of the Cotswolds Premier Building
Companies is also offering a

PROFESSIONAL HANDYMAN SERVICE

Experienced multi-skilled tradespeople
ensuring excellent value for money
and reliability...

01451 822 577

maintenance@clarkeandhumphries.co.uk



TREVOR YEARDYE
Luxury Bathrooms

DESIGN, SUPPLY AND INSTALLATION



Tel: 01451 820225
trevor@yeardye.com

www.yeardyebathrooms.com

Cotswold youth workers wear Yellow for World Mental Health Day.



October the 10th was World Mental Health Day 2019 and to mark this event our Cotswold youth workers wore yellow to work that night in Blockley to remind young people that it's okay to talk about their mental health with our experienced youth workers. Promoting Mental Wellbeing is a particular passion of Gemma, our youth work manager for the Cotswolds, she brought with her lots of books and magazines as well as well-being resources from the NHS and Gloucestershire Action on ACEs for the young people to browse during the youth club session. The message given to the young people that although today there is a lot of attention on talking about your Mental health, our youth workers are always available at youth clubs to have discussions in confidence about mental well-being. Young people aged 8 to 18 can access our youth workers at the following locations :

Bourton on the Water: Bourton vale cricket club
age 8-13 6pm till 7:30 age 13 plus 7:30 till 9pm

Moreton in Marsh: St David's Centre, age 8-13
6:30 till 8pm (due to change in January)

Stow on the Wold: Community Hub, age 8-13 6pm
till 7:30, age 13 plus 7:30 till 9pm

Blockley: Sports and Social Club, age 8-13 5:30 till
7pm, age 13 plus 7pm till 8:30.

Gemma Hall

Youth Work Manager

Homes for Hedgehogs and Other Small Creatures

Here in Bourton-on-the-Water we're fortunate to have a number of resident hedgehogs who have made a home in some of the larger gardens of the village's older properties.

As the weather turns colder and the days grow shorter, and we humans start to spend more time indoors, our hedgehog friends also start to look for a cosy place to spend the winter.

Hibernating between November and March, a favourite hedgehog spot to spend the winter are piles of twigs, leaves and branches. Exactly the type of thing we leave at the bottom of our gardens and decide to 'tidy-up' as we cut back the summer growth and get ready for the quieter months outdoors.

By leaving some piles of twigs, branches, leaves etc, we can create a sanctuary from the cold for hedgehogs and other small creatures. So, if you can leave a few areas of your garden slightly less than tidy, you will potentially be doing species like the hedgehog a favour by creating a winter home.

Check for creatures before lighting a bonfire or strimming the garden!

To help prevent hedgehog or other creature casualties, there are a number of simple steps we can take to ensure they don't get caught up in fires or gardening activity:

- 1) Make sure that we only build our bonfires the day we plan to light them.
- 2) Double check hedgehogs (or other wildlife) hasn't snuck under our 'cosy' wood piles before lighting them.
- 3) Check long grass for animals before you strim – maybe try to leave at least one area of your garden untrimmed (neat is not really nature's friend... as all manner of creatures take refuge in our longer grass or wood pile areas).

If you were to find an injured or sick hedgehog, there are at least 2 local wildlife sanctuaries that offer specialist care for hedgehogs.

The nearest of these is **Vale Wildlife Centre** off the A46 towards Evesham.

For casualties or immediate advice please ring: 01386 882 288 (7am-5pm).

From 5pm until 7.00am, there is a voice mail but the hospital is staffed 24/7 so casualties can be brought to us at any time. No need to ring beforehand.

<http://www.valewildlife.org.uk/>

Di Wheatley

Bourton Artisans

Buy direct from our local Artists and Craftspeople



- Paintings
- Pottery
- Silver Jewellery
- Candles
- Enamels
- Fused Glass
- Turned Wood
- Mosaics
- Porcelain
- Pyrography

Unique gifts & homeware

Fresh stock arriving
with us all the time

www.bourtonartisans.co.uk

info@bourtonartisans.co.uk



BOURTON PANTO GROUP

Are you planning for Christmas yet? Is your festive diary already getting full? I'm sure there's still room for one more night out to get you in the mood for the joys ahead. The

brains of the Panto Group, known to us as Emma, has been scouring the Encyclopaedia Britannica, Wikipedia, The Daily Telegraph and her own personal copy of Roald Dahl's Glorious Galumptious Story Collection and she's come up with the best quiz yet. So put your thinking hats on and come down to Victoria Hall, Bourton-on-the-Water on Friday 6th December at 6.45pm ready for the quiz to start at 7.30pm.

The cost for a team of 4 people is £16, this will include a mince pie and there will be wine, beer and soft drinks on sale throughout the evening. To book your table please contact Margaret Strevens in 07791917684 and don't delay they're going fast!

Another date to put in your diary is 29th January-1st February when our pantomime, Mother Goose will be on at Victoria Hall in Bourton. So if you want to join in the goosey fun go the panto group website, www.bourtonpantogroup.com where there will be information about the performance and when you can buy tickets.

Rehearsals are already underway for our next production but we are always looking for new members to support us in all aspects of the show from set production to making the tea. If you think you would like to be part of our group please contact Jan Close for more information on 01451 831911. If you would like to become a Patron please contact Angela Layton on 01451 821344 and she will be happy to tell you the benefits of supporting the Bourton Panto Group.

Jackie Denham



Cleaners Available!

Based in Bourton-on-the-Water. We're an established fully insured company, employing local staff with extensive experience and references.

Just give us a shout...

014 51 61 71 81

cleaning@clock-stoppers.com

IRENE'S CHARITY KNITTING CIRCLE

During this month we will be preparing items of knitwear/crochet, including toys, clothing and blankets for Community Awareness Christmas parcels and also provide further supplies of twiddlemuffs to local care homes.



Our ladies are also knitting items for newborn and premature babies. These will include beanie hats and we are also making premature baby matinee jackets and small toys.

Distribution of items for Syria continues and we will now be delivering clothing and blankets during the month to our new distribution centre in Birmingham.

If you are able to knit/crochet and would like to help us provide items to help families in Gloucestershire and abroad do come and join us on the second Wednesday of each month at the Community Centre Cafe, Moore Road, Bourton-on-the-Water. We meet from 10.00 a.m. until 12.00 noon and you will be served with tea/coffee and biscuits.

For further information contact:

Irene Summers 01451 798718 Peter Boxall 01451 820099

Planning an event in Bourton?

Check the **Village Diary** to see what is already scheduled. Visit:

www.bourtonbrowser.co.uk

Send us the dates of your community events for 2019 / 2020 and we will add them to the **Village Diary**.

Email: **team@bourtonbrowser.co.uk**

Bourton lady Wing Walks for Local charity



On Friday 20th September I drove across the beautiful Sunny Cotswolds and arrived at Rendcombe airfield a lovely setting to witness Lynda Hicks doing a wing walk to raise funds for Kates Home Nursing of Stow on the Wold

Rendcombe Airfield was originally a WW1 airfield used to train badly needed pilots for the Western Front and is now partly used by Aerosuperbatics.

Lynda Hicks is a brave lady and to hear of her many adventures on behalf of charity please tune into BBC Radio Glos on the I player, go to "The Pete Wilson Show", 12.00, recorded 8th September 2019.

Despite Lynda's flight being delayed all went well with perfect flying conditions and after a 10 minute flight around a perfect blue sky with speeds of around 100knots Lynda landed safely back to earth!! The aeroplane was a 1940 Boeing Stearman 450 HP radial piston engined bi-plane.

The total sum raised was £3000 thanks to the generous support of the public and sponsors.

Dave Duckett



Kate's Home Nursing
A Special Kind of Palliative Care

Christmas

CAROL SERVICE

St Edward's Church, Stow-on-the-Wold

Friday 13th December 2019 at 6.30pm

Performances by...

Richard Coxon UK Tenor	Hugo Kennard Organ/piano & Choir Master	Wine Direction Choir
---------------------------	---	-------------------------

Tickets available from...

The Borzoi Book Shop, Stow-on-the-Wold
or email: gabriellekubale@hotmail.com

or send SAE to:
Kate's Home Nursing,
1 Five Bells Cottages,
Church Street,
Bledington OX7 6XG

£15.00
per ticket

Under 16's FREE



Roxie's Pawly Pals

Thank you to everyone who supported the sales at Victoria hall in aid of our charity and also thanks to all the helpers. We help people who find it difficult to pay vets bills for treatment or operations for their dogs. Although we are based in Cirencester our area includes Bourton-on-the-Water. We have helped a lady from Bourton and her dog is doing fine. The sales this summer have raised £4286.95.

Judy Mace



Stoneways

For Kitchens, Bathrooms, Carpentry and Plumbing

For all aspects of kitchen & bathroom installations

- Kitchen installations
- Bathroom refurbishments
- Full project management
- 3D Bathroom design
- Wall & floor tiling

- Water softener supply & installation
- Unvented systems
- Central heating power flushing
- Real wood flooring
- And much much more.....

Locally based & an independent company - Free written estimates - Fully insured

For bathrooms & plumbing

07518 138572

For kitchens & carpentry

07951 308672

Please visit our web site for: Testimonials, Gallery and much more information

www.StonewaysBathrooms.co.uk

contact@StonewaysBathrooms.co.uk

Stoneways Bathrooms & Plumbing Limited



bourton handyman

for all those odd jobs

07515 519636 01451 821267

- Garden shed & fence repairs
- Decorating • Shelving
- Flat packed furniture
- Rotten wood repair system



MANUFACTURED IN THE UK BY CHEMEX


APPROVED CONTRACTOR

[/bourtonhandyman](https://www.facebook.com/bourtonhandyman)

[@BourtonHandyman](https://www.instagram.com/BourtonHandyman)

bourtonhandyman@gmail.com

www.bourtonhandyman.co.uk



intuit quickbooks.

Certified ProAdvisor
Online

Save time and money on your bookkeeping and accountancy needs.

TAX/VAT/PAYE/CIS

Be ready for 'making tax digital'.

John Mutsaers ACMA

Mobile: 07917 605863,
email:jmutsaers@hotmail.co.uk

Dave's Aerials & Satellites

Optical fibre, Networking & European Satellite Specialist

All types of aerial, satellite & CCTV camera work undertaken.



T. 01451 495014
M. 07928 203589

www.davesaerialsandsatellites.co.uk

New woodland walk now opened at Edwardstow Court for the enjoyment of all

A beautiful woodland walk has been officially opened at Edwardstow Court in Stow-on-the-Wold for the benefit of residents and the wider community.

Over the last year a patch of woodland next to the home has been transformed into an attractive and tranquil outside space. A new path, accessible for all, including wheelchair users, now winds through the woodland, and new seating areas have been added.

The woodland, which is hoped will become a haven for wildlife, will be a lovely spot for residents and their loved ones to sit or enjoy a gentle walk. The local community, which has been very involved in the regeneration project, are also very welcome to use the space.

The Mayor of Stow-on-the-Wold, Ben Eddolls, officially opened the woodland walk, describing it as a real asset for the town and a great way of bringing younger and older generations together.

Many of those who had supported the project also attended the opening event, including representatives of Cotswold Friends, which created bug houses for the woodland, and local artist Louise Evans, who painted a watercolour map of the site. Pupils from Stow-on-the-Wold Primary School also attended and were excited about how they could use the woodland for outside events and activities.

Residents who had been heavily involved with the project, including choosing seating and judging the winner of a best bird box competition, loved getting their first chance to explore the finished woodland walk.

Kerry Dearden, Deputy CEO, comments: "The Woodland Walk opening was a wonderful event which was shared by not only

our residents and the team at Edwardstow but by several members of the local community who came out to support this venture. I would like to thank everyone involved who helped to prepare the woodland walk and the Trust hopes it will be fully utilised by all in Stow and the surrounding region."

Millie Chambers, 07976 378714 M.Chambers@OSJCT.CO.UK

Home-Start Cotswolds Volunteering Opportunities

Do you have parenting experience? Can you give 2-3 hours during the week to help local families with young children?

Being a parent is hard, especially if you do not have family and friends nearby to help. We train volunteers to visit families and provide them with non-judgemental, confidential support.

Our next **FREE** training course will run in Cirencester every Wednesday morning during term time for 8 weeks, from **22nd Jan to 18th Mar 2020**. To find out more, come along for coffee at 11am in either Cirencester on **Wed 6th Nov**, or Bourton-on-the-Water on **Mon 11th Nov**.

Full details at www.home-start-cotswolds.org.uk or call us on 01285 885391.

We'd love to hear from you!

Mrs Orchard—where are you?

I wish to trace a Mrs Orchard who lives in Bourton-on-the-Water. About two years ago she met my husband at a funeral and enquired "how do you like living in Alice's Cottage, Victoria St?" She told him she knew a lot about the cottage and we feel it would be interesting to learn more. Since then I have met her outside the chemist but unfortunately she did not give me her contact numbers. I have 'phoned the local "Orchards" from the telephone directory but to no avail. Should you be that lady please contact Mollie and Derek Wise on 01451 822365. We would be delighted to hear from you. **Mollie Wise**

John Boyles

CeMAP CeRER CCIBS

Independent Mortgage & Protection Consultant

- Purchases
- Home movers
- Re-Mortgages
- Buy to Lets
- First time buyers
- and more...*

For an initial chat, call
07928 662940 or email
john@emailmefs.com

ME ME FINANCIAL SERVICES LTD

Me Financial Services Ltd is an appointed representative of HL Partnership Limited, which is authorised and regulated by the Financial Conduct Authority. Me Financial Services Ltd is a company registered in England and Wales with company number 11622710. The registered office is 34 Cheswick Way, Cheswick Green, Solihull, United Kingdom, B90 4EZ.

BOURTON BASKET

Knitting and Crochet Yarns

Cotton Fabrics for Patchwork and Quilting

Needlecrafts



Felt and Felting

Kits

Mulberry Paper Flowers

and Craft and Haberdashery supplies

3 The Old Forge, Moore Road, Bourton-on-the-Water, Gloucestershire, GL54 2AZ

Tel: 01451 821091 Email: mail@bourtonbasket.com

Servicing specialists covering all models of Land Rover ® and Range Rover ® vehicles. MOTs arranged & work carried out. Servicing, diagnostics, repairs brakes, parts & accessories.

BOURTON
LAND ROVER ® & RANGE ROVER ® VEHICLE SPECIALIST

www.bourtonlr.com
01451 810 364
Bourton-on-the-Water
Gloucestershire
GL54 2AR



* HAVING YOUR VEHICLE SERVICED WITH US WILL NOT INVALIDATE YOUR WARRANTY

paddy
the barber

Gents - £12
Over 65 - £10
Children (5-15) - £10

The George Moore Community Centre

Appointment only book via
www.paddythebarber.co.uk
or 07775 444473

Bourton Roadrunners

It's been another busy week of racing for Bourton Roadrunners Club, in totally different parts of the world.

Draycote Water 10k -In-form Darren Long ran his final race before representing England at the York Marathon next week-end. In fairly inclement weather he finished 3rd overall and was rewarded for all his hard work with a PB of 36:57.

Chicago Marathon -Steph and Gary Holton travelled west to run at Chicago Marathon, one of the marathon majors. Despite a 5.30am baggage check in, it worked well with jet lag. Steph finished in 3:51:19, bettering her time at London Marathon this year, while Gary, after only a few weeks of gentle training due to an ongoing injury, was really pleased to complete the course in 5:21:17.

Club trip to Sofia, Bulgaria -The annual overseas club trip is part of the club's tradition. With a full marathon, a half marathon and 10k there was good choice of events. Trip organiser Mike Smith opted for the half in his first race after a long-term injury finishing in a respectable 1:28:08. Susan Hunt and Margaret Hollamby were neck-and-neck, both having a great run, finishing in 1:50:02 (49th) and 1:50:41 (50th) respectively. Also in the half were Graham Lane (1:54:06) and Linda Edwards (2:00:30). Neil Russell opted for the full marathon and achieved a respectable time of 4:30:00. Meanwhile, five of the group opted for the 10k, thereby allowing them more time to enjoy the city, these were: Claire Carroll (1:07:05); Lynn Hud-

son, Gillian James, Shirley Creed (1:07:31); and Nicola Patterson (1:21:36).

Gloucestershire Cross-Country, Wotton-under-Edge -Only the hardy are prepared to take-on the challenge of cross-country and whilst Bourton was well-outnumbered, Martin Cook, Lee Campbell, Emily Field, Diana Dee, Jennifer Glass, Gill Carrick and Isabel Barnett were all up for that challenge, battling through ditches and muddy water, and did themselves and their club proud, in very difficult running conditions.

Grittleton 10K -On a very wet morning, Bourton Roadrunner Janet Bilinski ran her first 10k. She was very pleased with herself to finish in 1:02:36.

Great Birmingham Run—Due to heavy rain and flooding the course had to be changed. It was actually 2 miles short. Roadrunners David and Sharon Rees finished very damp in 1:52:36 and 1:52:37 respectively. **John Gibson**

The Police & Crime Commissioner Annual Report

The Police and Crime Commissioner is required to produce an annual report reflecting how he has carried out his responsibilities over the past 12 months and progress in delivering the Police and Crime Plan. In line with his role as a democratically elected representative, the report is then presented to Gloucestershire County Council's Police and Crime Panel and in addition to seeing it, the Panel has asked for it to be communicated and distributed as widely as possible.

If you would like to see the report please go to: <https://www.gloucestershire-pcc.gov.uk/reports/>

Hard copies are also available from the OPCC at ppc@gloucestershire.pnn.police.uk

As a summary of the twelve months from April 2018-March 2019, this year's annual report highlights the challenge of dealing with a growing range and complexity of crimes, complicated by additional social issues around mental health and lack of youth provision. It reflects on key announcements regarding collaboration with bordering forces and Gloucestershire's Fire and Rescue Service, budget details, award winning services and the continuing success of the Commissioner's Fund.

Vanessa Pegler

Chimney Sweep
Charlie

Please get in touch to book your log burner/stove/chimney in!

www.chimneysweepcharlie.co.uk
chimneysweepcharlie@outlook.com
07923 047682

- Fully insured
- CCTV inspection
- Log burners
- Stoves
- Inglenooks and



CHIMNEY SWEEP CHARLIE
COTSWOLDS

Batsford

ARBORETUM & GARDEN CENTRE

Batsford Arboretum
and Garden Centre -
naturally beautiful
all year round.

Soak up the last of the autumn colour at Batsford Arboretum this month. Browse our selection of gifts and plants and treat yourself to a home-baked lunch or afternoon tea in our café. A perfect day out for all the family – including the dog!

Batsford Arboretum & Garden Centre,
nr. Moreton-in-Marsh, GL56 9AD

www.batsarb.co.uk Tel: 01386 701441

Open 9am-5pm Mon-Sat, 10am-5pm on Sundays

CHRISTMAS Charity Band Concert

Saturday 14th December 2019 at 7.30pm

THE COTSWOLD SCHOOL

Bourton-on-the-Water

TICKETS £12.00

Available from:

Visitor Information Centre Bourton-on-the-Water

Telephone: 01451 820211

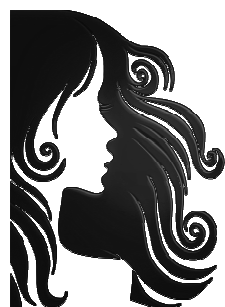


THE WATERLOO BAND AND BUGLES OF THE RIFLES

(The Band plays by permission of 7 Rifles of The British Army)



Arranged by: The Royal British Legion
Assisted by North Cotswolds Rotary
Charity No: 1033739



Paula's Hair Studio

Lansdowne, Bourton-on-the-Water

Styling Ladies &
Gentlemen's Hair

since 1977

For an appointment call

01451 821204

YOUR LOCAL DOG GROOMING PARLOUR DESIGNER POOCH

C&G QUALIFIED GROOMER with over 12 years experience

JUST NAIL CLIPPING
from £5 - *Just pop in!*

t: 01451 822984

m: 07805 415474

1A VICTORIA STREET
BOURTON ON THE WATER GL54 2BU



LOCAL GROUPS AND ORGANISATIONS

For amendments call 822431.

Numbers without an area code are 01451

Angling Club	Peter Pulham	820044
Archery Club	GRArcheryClub@gmail.com	
Badminton Club	ciclar@gmail.com	
Bell Ringers, BOW	Anne Clark,	820759
Bell Ringers, Gt Ris	Sheila Jesson,	820395
Bourton-on-the-Water WI	Marion Duffy	820939
Bourton Panto Group	Jan Close	831911
Bourton Probus Club	Chris Fowler	820787
B'n Road Runners	Lynn Hudson	01242 820920
Bourton Rovers Football Club	Brian Hall	07901106900
Bourton Vale Cricket Club	Kirsty Morgan	07788 137838
Bourton Vale Tennis Club	Ann Whitney	832215
Brass & Silver Bands	John Finch	820175
Bridge Club	Tim Morris	01285 750288
Cotswold Fosseway Lions Club		0845 833 9825
Embroiderers Guild	Julie Smith	01608 651006
Flower Club	Nadine Dickinson	832199
Friday Club (senior)	Marlene Johnston	810233
Heart Smart	Sarah Clifton-Gord	01285 623450
History Society	Sue Roberts	822230
Hockey	Tracy Dixon	07813187933
Horticultural Society	Antoinette Green	824141
Men in Sheds	Keith Barber	831886
Memory Cafe	Teri Walker	525222
Moore Lunch Club	Jenny Stanfield	824338
Moreton Bowls Club	Brenda Dix	821020
North Cotswold Memory Club	Lorna	07971 929258
Nth Cotswold National Trust	Olivia Anphlett	01386 593085
OPEN 4U		824225
P3 Advice & Guidance Drop Ins		01608 653377
Parkinson's Exercise Group	Cally Maxwell	07957 546 067
Pilates	Robert Cox	07500 188445
Read Easy North Cotswolds	Sue Brereton	08444930686
Respiratory	Sarah Clifton-Gord	01285 623450
Rotary Club Nth Cotswolds	Steve Whincup	07488 365908
Rural Cinema	Mollie Wise	822365
Scottish Dancing Group	Brenda Parsons	831876
Strength & Balance Class	Cally Maxwell	07957 546 067
Short Led Walks	Alan Robinson	821067
St John Ambulance	Head Office	0877 104950
T'ai Chi	Valerie Ward	07779 746346
The Fitness League	Kathy Kirk	01993 882350
U3A Bourton & District	Sandra Gavin	824178
Wellness Group for women	Claire Furner	07720 887205
Windrush Carers Support Group	Barbara Newstead	821523
4 Shires Swimming Club	Philippa Upton	07757 246167

The Bourton Browser is printed by

Peter Dunford,

01608 658104,

petedunf@aol.com

W J Wright

Funeral Director



Bourton-on-the-Water

01451 810700

Stow on the Wold

01451 831829

Moreton in Marsh

01608 652612

24 Hr Service

Private Chapels of Rest
Funeral Prepayment Plans

info@wjwrightfunerals.co.uk

Bourton-on-the-Water Library

Bourton Community Centre, Moore Rd,
Bourton on the Water, GL54 2 AZ

01451 820964

Opening Hours Tuesdays 10:00—13:00

Wednesdays 14:00—17:00,

Fridays 10:00-13:00 & 14:00—17:00

Saturdays 10:00-13:00

Friendly staff & volunteers. Internet access.

www.gloucestershire.gov.uk/libraries

Info Nikki Winters 01451 830352

Rates and Dates for advertising in the **BOURTON BROWSER**

6 x 9 cm per mth £20, per 6 mths £115, per 12 mths £220. 9 x 12 cm per mth £40, per 6 mths £230, per 12 mths £440. See page 1 for deadline. To discuss your advertising needs or book advertising complete the contact form on the "Get in Touch" tab. State the size required, the period you would like to book for & attach your advert as a jpeg or pdf. I'll confirm if space is available. We strongly advise early booking.

Delivery—We print 2300 copies and aim to deliver to every house in Bourton-on-the-Water & Clapton-on-the-hill. A few people in outlying properties have to collect their copies from GMCC. Copies are also available from some village shops and GMCC.

Ray Dodd, Advertising Manager

ABOUT THE **BOURTON BROWSER**

All articles received will be printed wherever possible in the magazine & on the website, however we reserve the right not to print anonymous letters or anything of a defamatory or controversial nature. We have a limit of 300 words per article. If your contact details appear in the Bourton Browser they will be on our website copy. If you do not want this to happen tell us. Unless we hear from you we will assume consent. The views of contributors to the Bourton Browser may not necessarily be those of the Editor, nor can the Bourton Browser accept any responsibilities in connection with any companies or organisations mentioned.

IMPORTANT TELEPHONE NUMBERS

Doctors Surgery	01451 820242
Out of hours GP Services	0300 421 0220
NHS Dentist emergencies	0300 421 6440
Appointments / enquiries	01242 215025
Mr Speechley	01451 820306
Mr Dannhauser	01451 821268
Moore Friends Sandra Morgan	01451 824316
George Moore O/P Clinic	0300 421 6940
Moreton-in-Marsh Hosp	03004 218770
Cheltenham Gen Hosp	03004 222222
Cirencester Hospital	0300 421 6200
Minor Injuries (Ciren. Hosp)	01285 884553
Police (emergency)	999
Police (all non emergency calls)	101
Police Station	01452 907200
Action Fraud	0300 123 2040
Crimestoppers	0800 555 111
Citizens Advice Bureau (CAB)	0808 800 0511
Thursdays, by appointment only, at Moreton Area Centre, High St, Moreton-in-Marsh.	
Samaritans	01242 515777
Bourton-on-the-Water Parish Council	
9am-3pm Monday-Friday	01451 820712
Cotswold Dist Council	01285 623000
Dog Warden	01285 623000
Glos County Council	01452 425000
Bourton Village District Councillor	
Nick Maunder	07866 885468
Bourton Vale District Councillor	
Richard Keeling	01451 821146
County Councillor Paul Hodgkinson	07785 263759
Emergency Calls & Hotlines	
Electricity SSE	0800 0727282
Power Cuts	105
Gas Emergency	0800 111999
Thames Water	08000093964
Environment Agency	0800 807060
Pulhams Coaches (local)	01451 820369
Jubilee Lodge	01451 823100
Volunteer Help Centre	
Moreton-in-Marsh	01608 651115
Veterinary Surgeons	01451 830620

Taxi Services

Limozena	01451 820972
Genny Stallabrass	01451 822665
Tony Knight	07887 714047
Private Hire	01451 822190
McTimoney Chiropractor	01451 509125
Tina Hamer	07884 312559
Chiroprapist Derek Brookes	01451 822540
Chiroprapist Catherine Smyth	01451 821840

Foot Health Practitioners

David Brookes	01451 509345
Paul Brookes	01451 810981
Ramona Gogolos	07884 318091

Acupuncture

Sue Britton	01451 821927
Andrea Bailey	07702 928139

Cotswold Osteopaths 01451 810086

Reflexology Adrienne Halliday 07885 730495

Annabel Drury 01451 828118

Physiotherapy & Acupuncture

Lucy Walmsley 01451 822660

Funeral Directors

WJ Wright 01451 810700

Church of England

Rev Rowena King revrowena@gmail.com

Baptist Church

Ian Fowler Church Office 01451 824225

Catholic Church

Father Stephen Lambert 01608 674354

Newsagent (Stow) 01451 830406

Community Wellbeing Service

Steve Whincup 07738 106543

Bourton Post Office 01451 820220

Bourton Library 01451 820964

Bourton Primary School 01451 820458

Cotswold School 01451 820554

Tourist Information 01451 820211

Bourton Leisure Centre 01451 824024

Runnerbean Health & Fitness 01451 822541

Chemist Rowlands Pharmacy 01451 820849

National Rail Enquiries 08457 484950

Lloyds Bank mobile visits to GMCC

Monday 9.30-12, Wednesday 13.15-15.15,

Friday 9.30-11.45

SOLO ADVENTURES TOGETHER

Just You has been crafting holidays especially for solo travellers for over 15 years. Bringing people together to share the joy of travel. Short breaks, grand tours and everything in between. Best of all, you'll be with a group of like minded people who share your love of travel and sense of adventure. It's one of the many things that makes a Just You holiday amazing.

Travelling Solo, But Not Alone

Every trip has been carefully designed with you, the solo traveller, in mind. Packed with loads of amazing experiences, as well as free time to explore by yourself if you want to.

It's your holiday, so there's plenty of scope to tailor your trip and make it amazing just for you.

WHY NOT POP IN TO OUR BOURTON BRANCH
AND LET US HELP PLAN YOUR NEXT ADVENTURE.

C
CARRICK
TRAVEL

just you
solo adventures together

YOUR WAY TO THE WORLD

BOURTON-ON-THE-WATER
Moore Road, GL54 2AZ
T: 01451 822048
E: bouton@carricktravel.com

WWW.CARRICKTRAVEL.COM

We have offices in: Bingham,
Bourton-on-the-Water, Coventry,
Evesham, Grantham, Kenilworth,
Keyworth, Leamington Spa,
Newark, Pershore, Solihull and
Stratford-upon-Avon

