

# BOURTON BROWSER

ISSUE NO 272 [www.bourtonbrowser.co.uk](http://www.bourtonbrowser.co.uk)

December 2021

## DIARY DATES

## Parish Council Notes

Every Mon, Wed & Fri, Bourton Men in Sheds, 9.30am-12.30pm, Behind RBL, 01608 692811. See page 5.

1<sup>st</sup> Parish Council meeting, 7.00 pm. **GMCC**. See page 2.

3<sup>rd</sup> Panto Group Quiz, **VC**, 6.45pm for 7.30pm. Tickets £16 for team of 4, includes nibbles. Wine, beer & soft drinks on sale. Tickets, 077919 17684. See page 13.

5<sup>th</sup> At the Pavilion", Market, 10am-4pm, **CCP**, [jthepavilion@gmail.com](mailto:jthepavilion@gmail.com)

5<sup>th</sup> N.B. Event Cancelled, Christian Craft Faire, Shalom.

6<sup>th</sup> & 20<sup>th</sup> Mindsong, Sing 2 Remember Sessions, **GMCC**, 10.30am. 821216 / 07763 212506. See p. 11.

7<sup>th</sup> & every Tuesday, Strengthen & Lengthen Yoga, **CCP**, 11.30am-12.30pm 07412651776 [mindful-movementyoga@outlook.com](mailto:mindful-movementyoga@outlook.com)

8<sup>th</sup> Irene's Charity Knitting Circle, **GMCC**, 10am-12Noon. See p. 12.

8<sup>th</sup> Christmas Story Telling Event, Rainbow Refreshments, Shalom, Moore Rd, 3.30pm. See page 8.

8<sup>th</sup> & 22<sup>nd</sup> Bourton Community Day Club, 10.30am - 2.30pm, **MC**, GL54 2HE. 01608 652019.

8<sup>th</sup> Gardening Club, **StLC**, 7 for 7.30pm. See page 12.

9<sup>th</sup> Bourton Lunch Club, **CCP**, GL54 2AY. 12Noon, 01608 692811.

11<sup>th</sup> Tayler & Fletcher, Monthly Auction Sale, **NCS**, GL54 2AR. 821666 [fineart@taylorandfletcher.co.uk](mailto:fineart@taylorandfletcher.co.uk)

11<sup>th</sup> Christmas Charity Band Concert,

Continued Page 2, column 1

### Parish Council Notes – Council Meeting 3<sup>rd</sup> November 2021

**PC Richard Webb's** Crime Report highlighted damage to the Lych Gate at Cemetery Lane and the phone box in the High Street as well as broken glass at The Naight Play Area.

**Gloucestershire County Council Highways** received a petition from residents of the Beddome Way estate relating to the weight and speed of traffic on Meadow Way. The request for a 20mph speed limit and a weight limit was refused but GCC Highways agreed to liaise with local businesses to look at ways of alleviating the problem. The Speedwatch group will carry out speed checks in the area.

**Gloucestershire County Council's Build Back Better Fund** granted £2,700 towards the play equipment project.

**Rissington Road Car Park Renovations** - The contracting of the works at the Rissington Road Car Park has been delayed and the District Council expect them to start on 26th November.

**Litter Bins** – The District Council will be reviewing the pilot experiment of improved litter bins. Following this, a decision will be made on the use of tourist levy funds to support further improvements in the coming year.

**Strategic Housing and Economic Land Availability Assessment Review** - Following the call for sites campaigns in 2019 and 2020, CDC has updated the Strategic Housing and Economic Land Availability Assessment (known as the 'SHELAA' for short), available to download here <https://www.cotswold.gov.uk/planning-and-building/planning-policy/evidence-base-and-monitoring/> The SHELAA confirms the availability of land and assesses the potential suitability of development sites for allocation in the local plan. A couple of potential development sites have been identified in Bourton Village. The Parish Council will agree a response to the forthcoming consultation over the next few weeks.

**The new Village Warden**, Steve Cotton, has been familiarising himself with local residents and businesses. He praised the village for having very little litter and being extremely well looked after. He plans to work closely with PCSO Katy Perrett who will accompany Steve when required.

**Platinum Jubilee Event June 2022:** A working group has been formed and will report monthly into the Parish Council on progress with event planning. The Parish Council agreed to make funding available for the event but income from ticket sales and other activities will be offset against expenditure and it is hoped that there will be a small profit which can be donated to local organisations.

Continued on page 2, column 2

Baptist Church Hall = **BCH**  
British Legion Hall = **BLH**  
Cricket Club Pavilion = **CCP**  
George Moore Community Centre = **GMCC**  
Jubilee Lodge = **JL** Market Close = **MC**  
North Cotswold Sale Room = **NCS**  
St Lawrence Church = **StLC**  
Victoria Hall = **VH**

The *Bourton Browser* is run by volunteers & delivered monthly FREE to every household in the Village.

Go to the "Get in Touch" tab and then complete the contact form to send questions, articles (max.300 words), adverts & event details to the team.

Copyright © Bourton Browser 2020

The **DEADLINE** for Adverts & Articles for the January 2022 edition, is **Midday 15<sup>th</sup> December**

**GREEN MAN**

Socially distancing  
RPE & Sanitising



**Professional,  
Eco-friendly Carpet,  
Hard Floor, Rug  
& Upholstery Cleaning**

**01242 906576**

[www.greenmancleaning.co.uk](http://www.greenmancleaning.co.uk)

continued from Page 1, column 2.

- 7.30pm, Cotswold School, Station Rd. Organised by North Cotswold Rotary & Royal British Legion. See Page 4 for details.
- 13<sup>th</sup> Probus meetings, 10am, **GMCC**. See page 3.
- 14<sup>th</sup> WI Meeting, 7pm, **VC**. See page 5.
- 15<sup>th</sup> u3a, 10am coffee, 10.45, "Remembering the Swinging Sixties" by Ray Sturdy, **BLH**. See p. 6.
- 15<sup>th</sup> Bourton Local History Society, 40th Anniversary Meeting, **BCH**, 7.30pm. Visitors welcome. See page 5.
- 17<sup>th</sup> Kate's Home Nursing Christmas Carol Concert, **StLC**, 6.30pm, tickets £15, gabrielleku-bale@hotmail.com See page 15.
- 19<sup>th</sup> Farmers Market, **BLH** Car Park, GL54 2AR. 8.30am-12.30pm. 07986 085599. See below.

**BOURTON-ON-THE-WATER  
FARMERS' & PRODUCERS  
MARKET**

**December  
Sunday 19th**

**8.30am to 12.30pm**

Royal British Legion, Lansdowne Road, GL54 2AR  
For more info or to trade with us call 01786 085599

Help support British farming and local producers

EST. CHILTERNHAM 1940

**BADHAM  
PHARMACY**

**NEW PHARMACY IN UPPER RISSINGTON!**

**Badham Pharmacy**  
Unit 2, The Village Square  
Upper Rissington  
GL54 2FL  
TEL: 01451 828226

A new community pharmacy open six days a week

Monday – Friday 9am – 6pm  
Saturday 9am – 12:30pm

ASK ABOUT  
FREE DELIVERY

**Badham Pharmacy**  
11 The Square  
Stow on the Wold  
GL54 1BQ  
TEL: 01451 830623

Stow Pharmacy, also open six days a week

Monday – Friday 9am – 6pm  
Saturday 9am – 5pm

ASK ABOUT  
MINOR AILMENTS

[www.badhampharmacy.co.uk](http://www.badhampharmacy.co.uk)

continued from Page 1, column 2.

**Next Meeting Date:** The next Parish Council Meeting will be on Wednesday 1<sup>st</sup> December at 7pm in the Windrush Room at The George Moore Community Centre.

The Parish Council would like to offer all residents, business-owners and visitors a very Happy Christmas and New Year.

Sharon Henley, Clerk/RFO

Tel: 01451 820712; Email:

[clerk@bourtononthewater-pc.gov.uk](mailto:clerk@bourtononthewater-pc.gov.uk)

[www.bourtononthewaterpc.org.uk](http://www.bourtononthewaterpc.org.uk)



**THE QUEEN'S  
70  
PLATINUM JUBILEE 2022**

**Bourton-on-the-Water  
Platinum Jubilee Celebration  
2-5<sup>th</sup> June, 2022**

Make a note in your calendar for the 4 days in early June commemorating Queen Elizabeth's 70 years Jubilee. Bourton is looking to celebrate with a variety of events and activities for residents of all ages.

We're planning Picnic in the Park on the 3<sup>rd</sup>, Saturday Sports, Sunday Fun Day (with Bourton's Got Talent!) and kicking things off on the 2<sup>nd</sup> with lighting of the beacon.

More information will be provided as we get nearer the event!

**Michelbacher  
Cycles**

**NEW ADDRESS**  
Bike Servicing. EBike's built for you.



Custom built ebike using your existing cycle

- First class servicing at affordable rates
- Servicing built around the needs of your bike
- Free expert aftercare advice
- Bosch ebike service centre#
- New Workshop.

**Free Delivery & Collection**  
To Bourton and surrounding Villages

The Barn  
FLUFF'S FARM  
Bourton Hill.  
Bourton on the Water  
01451 810192 07788282755  
Email: [john@michelbachercycles.com](mailto:john@michelbachercycles.com)  
[www.michelbachercycles.com](http://www.michelbachercycles.com)

### *Bourton Browser Team News*

At the end of this, very peculiar, year we'd like to thank everybody who has made the Browser possible: All our wonderful volunteers - Production Team, Proof Reader, Bulk Distribution Team, Street Deliverers and Relief Deliverers.

We'd also like to thank: Our Printers, Advertisers, Contributors, Webmaster and IT support.

And, thank you to you: our Readers!

We are very lucky to have so many people willing to support us / work with us, to ensure the village has a free, monthly magazine delivered to everyone. The Browser is now in its 22<sup>nd</sup> year and, despite the pandemic, has never missed a month. A credit to everyone involved.

Hopefully, 2022 will be a year when all the village activities, groups and events will thrive. If you are organising events do let us know so we can advertise them and put them in the on-line village diary, accessible via our website:

[www.bourtonbrowser.co.uk](http://www.bourtonbrowser.co.uk)

If you have a programme of regular community meetings and would like them added to "Diary Dates" please email the programme to:

[team@bourtonbrowser.co.uk](mailto:team@bourtonbrowser.co.uk)

We welcome articles (max. 300 words) & photographs from adults & children on any subjects of local interest. Please email to the above address.

We'd like to wish you all a Very Happy Christmas and a Peaceful and **Healthy** New Year.

*The Bourton Browser Team*

**Christine, Rob, Ray and Susan**



# VJ COLLETT

## BOURTON ON THE WATER

ALL MAKES  
SERVICING AND REPAIRS

AIR CONDITIONING

DIGITAL FOUR WHEEL  
ALIGNMENT

TYRES, EXHAUSTS AND  
BATTERIES

MOT

DIAGNOSTICS

01451 820366

WWW.VJCOLLETT.CO.UK

## High Bridge Jewellers



### Tanzanite & Turquoise December's Birthstones

**Turquoise** is among the oldest known gemstones. It adorned the necks of Egyptian Pharaohs and the ceremonial dress of early native Americans. Thought to protect and bring the wearer good luck. **Tanzanite** is an exotic velvety blue with overtones of purple, it is one of a kind, only found in the foot hills of Kilimanjaro; making it rarer than Diamonds.

**Repairs Undertaken In Our On-Site Workshop**

**High Street, Bourton-on-the-Water,  
Cheltenham, Glos. GL54 2AQ**

01451 810928 [sales@highbridge-jewellers.co.uk](mailto:sales@highbridge-jewellers.co.uk)

[www.cotswoldfinejewellery.co.uk](http://www.cotswoldfinejewellery.co.uk)

Open 10.00am-5.00pm, 7 Days, Mon to Sun

## North Cotswolds Rotary

The Tree of Light provides the opportunity for local residents to remember a loved one at Christmas whilst at the same time raising money for local charities. For a



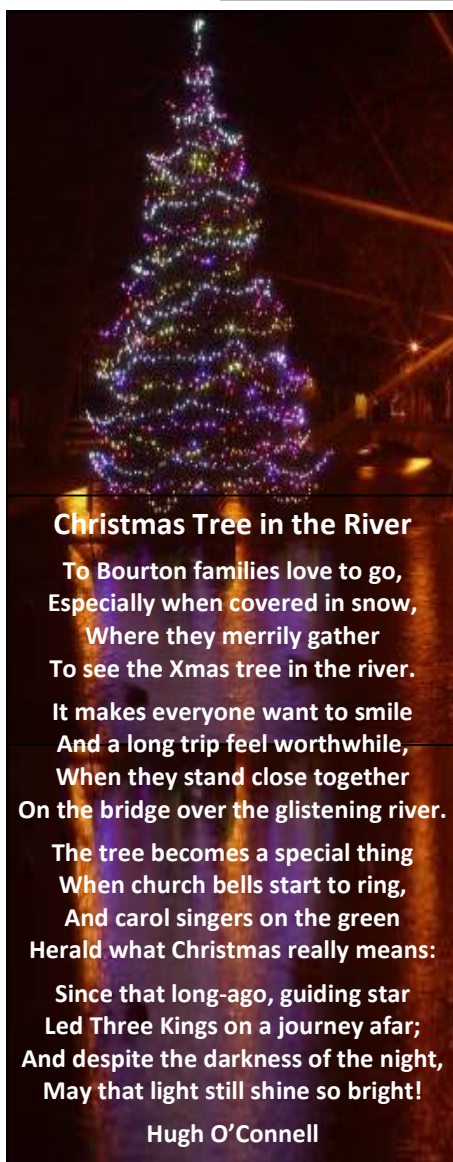
minimum donation of £5 you can give a brief tribute to your loved one and this will be displayed in Hartwells in Bourton-on-the-Water, Badham Pharmacy in Stow, a shop in Moreton (to be confirmed) and on the North Cotswolds Rotary website.

To remember your loved one please download and complete the form from our website:

([www.northcotswoldsrotary.org/treeoflight](http://www.northcotswoldsrotary.org/treeoflight))

Send your completed form by post to North Cotswold Tree of Light c/o Rotarian Roger Formby, The Americkey, Condicote, Cheltenham, GL54 1ES or email it to [rogerformby@icloud.com](mailto:rogerformby@icloud.com). You can post your donation to Roger Formby or you can pay on-line via BACS (details are included on the form).

Steve Smith



### Christmas Tree in the River

To Bourton families love to go,  
Especially when covered in snow,  
Where they merrily gather  
To see the Xmas tree in the river.

It makes everyone want to smile  
And a long trip feel worthwhile,  
When they stand close together  
On the bridge over the glistening river.

The tree becomes a special thing  
When church bells start to ring,  
And carol singers on the green  
Herald what Christmas really means:

Since that long-ago, guiding star  
Led Three Kings on a journey afar;  
And despite the darkness of the night,  
May that light still shine so bright!

Hugh O'Connell

## Bourton-on-the-Water

### Probus



We had an interesting talk in November by John Dixon on GIs present in the UK during the last War, which brought back memories for those of us old enough to remember this period. The next talk was on 'The Great Fire of Windsor' given by Fraser Gunn, followed closely on the calendar by Peter Gill, on 'Songs and Humour'.

In the run up to Christmas we look forward to a festive Lunch at Wyck Hill House Hotel, where we will be joined by partners and friends. We were unable to hold this event last year due to the dreaded Pandemic.

We look forward with optimism to 2022, when, hopefully, the Booster Jab will have had an advantageous effect on the population. It is hoped then that more prospective members will be tempted to join us at our regular two weekly meetings at the Community Centre in Moore Road, where they will be made very welcome. More information can be obtained by contacting our Secretary, David, on 01451 821098.

Season's greetings

Bill Furner

## OUT AND ABOUT in December

4<sup>th</sup> onwards Santa Express & Ride with Santa, Gloucestershire and Warwickshire Steam Railway, Toddington, GL54 5DT. Bookings required [www.gwsr.com](http://www.gwsr.com) or 01242 621405.

9<sup>th</sup>-12<sup>th</sup> Christmas Tree Festival, St Edwards Church, Stow-on-the-Wold. 40 trees, 10th year.

10<sup>th</sup> New Book Club, Stow Library, 4.30-6pm, see poster page 14 for details.

10<sup>th</sup>-12<sup>th</sup> Christmas Tree Festival, St John the Baptist Church, Gt Rissington, see poster page 14 for details.

11<sup>th</sup> Great Rissington Village Market, Great Rissington Club, 10am-12Noon, information from 01451 822285.

11<sup>th</sup> Combe Mill Christmas Market, OX29 8ET. 10am-4pm, Full details see page 14.

Until 30<sup>th</sup> December, Spectacle of Light Illuminated Trail, Sudeley Castle, Winchcombe, GL54 5LP. Tickets must be booked in advance, [www.everymantheatre.org.uk/Sudeley/](http://www.everymantheatre.org.uk/Sudeley/) or 01242 705 555

### Throughout December

Until 1<sup>st</sup> January, Enchanted Light Trail, Cotswold Farm Park, 4.30-10pm, Guiting Power, GL54 5F. 01451 850307. [www.cotswoldfarmpark.co.uk/events/enchanted/](http://www.cotswoldfarmpark.co.uk/events/enchanted/)

Until 2<sup>nd</sup> January, The Brothers Grimm present Cinderella, Barn Theatre, 5 Beeches Road, Cirencester, GL7 1BN. 01285 648255 [www.barntheatre.org.uk](http://www.barntheatre.org.uk)

Until 2<sup>nd</sup> January, Illuminated Trail, Christmas Market & "The Nutcracker" Palace Tour, Blenheim Palace, Woodstock, OX20 1UL. Advance booking strongly recommended see website, [www.blenheimpalace.com](http://www.blenheimpalace.com) or call 01993 810530.

Until 9<sup>th</sup> January, Jack & the Beanstalk, Everyman Theatre Cheltenham. 01242 572573.

**Visitor Information Centre 01451 820211**  
[info@visitbourton.com](mailto:info@visitbourton.com)

## FOR SALE / WANTED ITEMS

To advertise items such as Household items, Toys, Garden Equipment etc, complete the contact form on the "Get in Touch" tab. The advert should be no more than 15 words. It must be received **before 12 noon on the 15<sup>th</sup> of the month**. No commercial adverts accepted for this section.

### Please get in touch!

Will the lady who purchased the dishwasher and chairs please contact 07891 195710.

### For Sale

A little used Angelina Cot Bed including mattress.  
£50.  
821184

**For Sale** Mahogany TV Cabinet, with folding doors & 32" Sharp HD TV (only 2 years old) & CD DVD player. £100 ONO. Would consider selling separately. 821799

**For Sale** Computer sound system Logitech X-230. Stereo speakers and wired sub-woofer. Excellent fully working condition. 810 415 £20

### For Sale

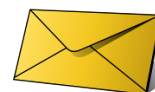
Black leather briefcase Tilley Executive style little used Excellent condition  
810415 £15

### For Sale

Exercise Bike. BodyFit Low resistance. Good working condition. Will deliver locally  
810 415 £20

## Christmas Posting

### Dates



For details of last posting dates, please go to:

<https://www.royalmail.com/christmas/last-posting-dates>

## Yoga & Pilates

Bourton on the Water  
Fran:07950 424037

[franyoga@rocketmail.com](mailto:franyoga@rocketmail.com)  
[www.franyogapilates.co.uk](http://www.franyogapilates.co.uk)

Weekly Classes on Tue & Thur  
One to one  
Registered Senior Yoga Teacher



Batsford Arboretum and Garden Centre,  
naturally beautiful all year round

Celebrate Christmas at Batsford with magical winter walks, unique gifts, decorations, hand-made wreaths and our huge range of Christmas trees (home delivery available). A perfect day out for all the family – including the dog!

**Pre-book your arboretum tickets via [www.batsarb.co.uk](http://www.batsarb.co.uk)**

Batsford Arboretum & Garden Centre,  
nr. Moreton-in-Marsh, GL56 9AT

**Open 9.30am-5pm Mon-Sat,**

**10am-5pm on Sundays**

(See our website for  
Christmas opening hours)



## CHRISTMAS CHARITY BAND CONCERT

11th December 2021, 7.30pm

SPONSORED BY BRIO Br6

AT THE  
**COTSWOLD  
SCHOOL,  
STATION ROAD,  
BOURTON-ON-  
THE-WATER**



TICKETS COST £12.00, FAMILY TICKET £25  
TICKETS AVAILABLE FROM THE VISITOR  
INFORMATION CENTRE, VICTORIA STREET  
BOURTON-ON-THE-WATER OR BY E-MAIL  
FROM [info@visitbourton.com](mailto:info@visitbourton.com)

**THE WATERLOO BAND AND  
BUGLES OF THE RIFLES**

ARRANGED BY:  
THE ROYAL BRITISH LEGION  
ASSISTED BY NORTH COTSWOLDS ROTARY  
CHARITY NO: 1033739





## IN PAIN???

TRY "THE BACK WOMAN" AT BOURTON!

- McTimoney Practitioner est. 1999
- Dry Needling / Scenar Pain relief Therapy
- Equine / Animal McTimoney
- Registered with The Association for McTimoney Practitioners



**Tina Hamer, mp, mamp**

Gentle and effective treatment for a variety of conditions

37 Roman Way, Bourton-on-the-Water, GL54 2EW

Tel: 01451 509125 / 07884 312559

Email: [tina.hamer@sky.com](mailto:tina.hamer@sky.com) [www.bourtonmctimoney.co.uk](http://www.bourtonmctimoney.co.uk)

### Bourton-on-the-Water WI

Congratulations and Celebrations were both very much in evidence on 21st October as the Bourton-on-the-Water WI celebrated their Centenary year. A lovely meal was enjoyed at Wyck Hill House Hotel. The weather was beautiful and the turn out superb.



Janice Cole from the Gloucestershire Federation of WI's joined the celebrations toasting 100 years. It's hard to believe that the first meeting of the Bourton WI took place in October 1921.

Accompanying the centenary celebrations, congratulations were very much part of the day, with several members having reached 25 years of WI membership. The biggest accolade however went to Antoinette Green having been a member for an amazing 50 years. Well done Antoinette and well done BOW WI.



Next meeting 7pm, 14th December, at the Victoria Hall, BOW. New members always very welcome. **Vanessa**

### Cotswold Fosseway Lions Club



A member of The Cotswold Fosseway Lions attended the ROAR21 judging of presentations at Northleach Primary School in November and the winner was announced in the school assembly. The Cotswold Fosseway Lions Club has funded this project for the Primary School. The programme is organised and run by "8 Billion Ideas", an award-winning, education company and is designed to give a platform to young people to think big and positively change the world!

Christmas Hamper Draw: Raffle tickets will be on sale in Northleach for a Luxury Christmas Hamper, with a 2nd prize of a wine and cheese box and a 3rd prize of a chocolate box. The draw will take place in The Curious Wine Cellar in Northleach on Saturday 18th December between 7-7.30pm. The club will be doing tin collections at the Fosseway Garden Centre in Moreton on Friday 3rd December and Saturday 11th December as part of our fundraising.

Our next monthly meeting is Tuesday 14th December in The Black Cat cafe in Northleach at 8pm.

**Avril Haseler**, President Cotswold Fosseway Lions Club

### BOURTON AND DISTRICT LOCAL HISTORY SOCIETY

As a change from our usual programme we are having a Christmas meeting to celebrate our **30TH ANNIVERSARY**. On Wednesday 15th December, starting at 7.30pm, we have an evening of **BOURTON HISTORICAL MISCELLANY**. Our speakers are local "Old Girls and Boys" with memories, photos and tales of the past. Visitors are always welcome.

**David Folkes**

## The Lady Painters

"Highly Recommended"

### High Quality Decorators

01451 850267

07450 036 855

[theladypainters@hotmail.com](mailto:theladypainters@hotmail.com)

Call Tracy for a FREE Quote

### BOURTON MEN IN SHEDS



Christmas is only a few weeks away and this will be the our last newsletter for this year.



The 'shedders' have been busy making / fulfilling all of our orders for 2021. We are now planning for the Spring by making bird boxes and bird tables too. We welcome you to come to the sheds and see other items we have made. We

are able to take orders too for 2022. Our site is behind the British Legion every Monday, Wednesday and Friday mornings from 9.30-12.30. Hope to see you soon.

As the colder weather is here don't forget we have bags of off cuts for the fire and they are FREE. We sell large bags of kindling for £5 per bag.

Bourton Men in Sheds is supported as a Community Activity by local charity Cotswold Friends.

If you might like to join the Bourton shed as a member or a volunteer, we would love to hear from you. For more information you can always telephone 01608 698557 or by emailing [sheds@cotswoldfriends.org](mailto:sheds@cotswoldfriends.org) Alternatively you can visit our website on [www.bourtonmeninsheds.weebly.com](http://www.bourtonmeninsheds.weebly.com)

So on behalf of Bourton Men in Sheds, we wish you all Merry Christmas and a Healthy New Year. See you in 2022.



**Dave Birch**



**STONES**  
**Traditional handcarved sandblasted memorials**  
 carving commissions undertaken

Peter Shaw BA Hons, DIP.LA  
 Mobile 07974 577924  
 Workshop Tel/Fax 01451 821414  
 Tel 01451 821671  
 Email [petershaw1951@btconnect.com](mailto:petershaw1951@btconnect.com)  
[www.stonesmemorials.co.uk](http://www.stonesmemorials.co.uk)  
 Bourton on the Water

### Bourton Roadrunners

#### Tewkesbury Guy Fawkes 5 miles – 7<sup>th</sup> November.

On Sunday Tewkesbury RC hosted the last event of this year's Gloucestershire AAA Road Race Series, with their Guy Fawkes 5 miler. Bourton Roadrunners had 18 members taking part at this ever-popular race, on a bright yet cool morning, over a largely flat course on country lanes. First finisher for the club was Ian Tolfts in a cracking time of 37:45, while Liz Hulcup was Bourton's first lady in 41:47 (1<sup>st</sup> LV65). Next to finish was Gill Carrick who had a good race, completing in 42:44 (LV60).

There were strong performances across the spectrum of Bourton's runners, with a number of members choosing to run in small groups assisting each other around the course, with Tom Knight (44:51), Claire Carroll (45:09), Louise Hamilton-Smith (45:41), Cathryn Nesbitt (46:52), Janice Townsend (49:03), Annie Oliver (49:03), Tom Hill (49:06), Allie Quinn (49:09), Pam Robb (49:12), Lynn Hudson (49:36), Jeanette Brew (57:58), Nicky Patterson (58:18), Chris Lynch (58:19), Coral Feenen-Hill (61:46) and Shirley Creed (61:47).



Tom Hill, Allie Quinn, Pam Robb, Janice Townsend and Annie Oliver at Tewkesbury Guy Fawkes 5 - photo by John Gibson

**COLOUR YOUR HOME** PAINTER AND DECORATOR

**PROFESSIONAL FEMALE PAINTER & DECORATOR**  
 PAINTING, DECORATING, SANDING, VARNISHING AND WALLPAPER STRIPPING & HANGING

[info@ColourYourHome.co.uk](mailto:info@ColourYourHome.co.uk)  
[www.ColourYourHome.co.uk](http://www.ColourYourHome.co.uk)

**FOR FREE QUOTES AND ESTIMATES PLEASE CALL**  
**HAYLEY ANDREWS**  
 07799 887 413

#### Reading Half Marathon – 7<sup>th</sup> November

The Reading half marathon is one of the largest road race events held in Britain, having first been held in 1983. With the 2020 race having been cancelled due to the coronavirus pandemic, and the 2018 even cancelled due to heavy over-night snow, entries for this year's race were hotly sought after, with elite and fancy dress runners alike lining up near the Madejski stadium.

Bourton's in-form Maxine Emes, a local doctor, having had a fine run last weekend at the Gloucestershire AAA cross-country in Cirencester Park, joined the elite runners and completed the 13.1 mile course in 1:42:49, which finished at the highway line in the Madejski stadium.

John Gibson



We are hoping to welcome members and prospective members to our monthly meeting at the Royal British Legion Hall, Bourton-on-the-Water, from 10am on Wednesday, 15<sup>th</sup> December, when refreshments will be served. They will be followed by a talk entitled "Remembering the Swinging Sixties" by Ray Sturdy and the cost will be £2 per head. It's hoped that those of us who do remember the sixties, as well as those who don't, enjoy the talk – and possibly the music? - of those exhilarating days.

The u3a is a charitable organisation for

**CHORLEY'S**

GLOUCESTERSHIRE'S FINE ART AUCTIONEERS

Free auction valuations  
 Regular fine art & antiques sales  
 Insurance & probate valuations

01452 344499  
[enquiries@chorleys.com](mailto:enquiries@chorleys.com)  
**[www.chorleys.com](http://www.chorleys.com)**

PRINKNASH ABBEY PARK  
 GLOUCESTERSHIRE GL4 8EU

retired and semi-retired people which is non-political, non-religious and non-discriminatory. We welcome single people and couples alike and we are not just for the academically-minded; most of what we do is for fun.

We exist to make the lives of those no longer in full-time work as healthy and pleasurable as possible, by providing the means to keep up with old interests, develop new interests, make new friends and generally expand our horizons.

In Bourton and District we have many interest groups, some of which have restarted after Covid and some of which are intending to restart soon. We are hoping, also, to start some new interest groups and members themselves are instrumental in suggesting subjects for groups which might be of interest to them.

The u3a is run locally entirely by volunteers and some who join us help to run the organisation.

If you would be interested in joining us, we do have a website on which you can find further information, or you can ring the number below, and leave a message, after which a committee member would contact you.

Website: [www.u3asites.org.uk/bourton](http://www.u3asites.org.uk/bourton)

Tel: 07783 235320





## Message from the Church

It is slightly strange to find oneself writing a piece looking forward to Christmas just a few days before Remembrance Sunday – but in fact it gives me the chance to reflect on my favourite carol “It came upon the Midnight Clear” and especially the third verse, which says:

**Yet with the woes of sin and strife  
The world has suffered long;  
Beneath the angel-strain have rolled  
Two thousand years of wrong;  
And man, at war with man, hears not  
The love-song which they bring;  
O hush the noise, ye men of strife,  
And hear the angels sing.**

As a child I sang in the local church choir – and this happened to be the garrison church in Catterick Camp in North Yorkshire where my father was based. I seem to have grown up aware of the dissonance between what we celebrate at Christmas – the possibility of peace for all people born in our world through the coming of the Christ child – and the reality that war, strife, bitterness, jealousy and argument still so mars the world Christ came to save. This carol is sadly still so

apposite. How many times have we all wanted to shout at those we see on TV on opposite sides of a heated political divide, “Just listen – listen to each other and you will find you are not as far apart as you think...”

It is easy to feel overwhelmed and too small to do anything to make our world a better place, and as the years roll on it can be tempting to give up hope. But Christmas is a time to allow ourselves a pause in the usual busyness of life and listen again to the amazing song of the angels which tells of the love God has for his world.

I want to leave you with the final verse of this carol – a verse full of hope:

**For lo! the days are hastening on,  
By prophet bards foretold,  
When with the ever-circling years  
Comes round the age of gold  
When peace shall over all the earth  
Its ancient splendours fling,  
And the whole world give back the song  
Which now the angels sing.**

Christmas Blessings to you all.

**Rev'd Nina, St. Lawrence Church**

**Roman Catholic Parish of  
Our Lady & St. Kenelm, Stow on the Wold,  
with Bourton-on-the-Water  
Priest: Fr. Stephen Lambert  
07836 384932**

**Email: [sulharcomb@aol.com](mailto:sulharcomb@aol.com)  
website: [stow-bourtoncatholic.net](http://stow-bourtoncatholic.net)**

**WEEK END MASSES:**

Saturday evening: **Vigil Mass 6 pm.**

Sunday morning: **9 am Sung Mass**

**WEEKDAY MASSES:**

At **9 am** Mon., Wed., Thurs, Fri at Stow. (No Mass Saturday mornings)

Mass on Tuesday mornings is held at St. Lawrence's Anglican Church, Bourton at **9 am.**

Please check weekday Mass times in November on the website as Fr. Stephen is away.

**Christmas Masses.**

**6 pm Christmas Eve Vigil Mass**, candlelit, with carols. (Children especially invited).

**10 pm 'Midnight Mass'** with carols from 9.30 pm.

**Christmas Day.** 10.30 am Sung Mass.

**Sunday 26th Dec.** is the Feast of the Holy Family, (nothing of St. Stephen this year). Mass at 9 am.

**Fr. Stephen.**



The Rev'd Rowena King  
[revrowena@gmail.com](mailto:revrowena@gmail.com)  
01451 821282



[www.bourtonparishchurch.co.uk](http://www.bourtonparishchurch.co.uk)

[www.facebook.com/StLawrencesBourtonOnTheWater](https://www.facebook.com/StLawrencesBourtonOnTheWater)

**Join our main Sunday service at 11am each week**

**Christmas Services**

- ◆ **Carols on the Green** – 6pm 19th Dec – join us on the village green to sing!
- ◆ **Crib Service** – 4pm 24th Dec (come dressed up as a character from the story!)
- ◆ **Midnight Communion** – 11:15pm 24th Dec
- ◆ **Christmas Morning** - 11am 25th Dec

We ask you to please wear a mask for our indoor services. Thank you!

**St James Clapton-on-the-Hill:** 5th Dec 9:30am Morning Worship, Mon 20th Dec 6pm  
Carols in the Churchyard, 25th Dec 9:30am Christmas Holy Communion

## QUAKERS

The Religious Society of Friends  
Every Sunday 11am  
at The Friends Meeting House,  
Pytt Lane, Burford  
Enquiries welcome Howard Crook  
01451 810447.  
To request a free info pack,  
email: [outreach@quaker.org.uk](mailto:outreach@quaker.org.uk)

## HIRE of HALLS

**Baden Powell Hall**  
[lettingsbph@gmail.com](mailto:lettingsbph@gmail.com)  
**Baptist Church Hall**  
Nigel Bray 01451 824423  
**Bourton Cricket Clubhouse**  
Lourenza Hargreaves 07375 033609  
[jlthepavilion@gmail.com](mailto:jlthepavilion@gmail.com)  
**British Legion Hall Branch Office**  
01451 824303  
**Community Centre**  
Jo Herbert 01451820712  
[admin@bourtononthewaterpc.org.uk](mailto:admin@bourtononthewaterpc.org.uk)  
**St. Lawrence's**  
Rev. Rowena King 01451 821282  
**Victoria Hall**  
Annette Lane 01451821039  
**Wyck Rissington Village Hall**  
Liz 07715 763414  
[wyckrissvh@gmail.com](mailto:wyckrissvh@gmail.com)  
**Cotswold Hall, Northleach**  
Jacques Astic 01451 860366  
**Bourton Farmers Market**  
Jaye Whalley 07986 085599



## Bourton Baptist Church Services

We are now meeting at 10.30am every Sunday morning in the church building, either for 'live' worship or to join with the service being streamed from Cirencester Baptist Church.

Everyone is welcome to join us. No pre-booking is required, but we do ask that you continue to wear a mask if possible and respect the Covid precautions that remain in place.

You can still join the Cirencester services online from your home if you prefer; these are now available via [www.youtube.com](https://www.youtube.com) and search for 'Cirencester Baptist Church' We are also now holding Open4U again every Thursday, from 10am until 4pm, in the Church Hall, so do come along and join us, everyone welcome.

To contact Bourton Baptist Church either visit our website

[www.bourtonbaptist.co.uk](http://www.bourtonbaptist.co.uk) or leave us a message on **01451 824225.**



## For The Younger Generations



### THE COTSWOLD SCHOOL

#### Gearing up for Christmas

There is much to celebrate at school – and not just because it's nearly Christmas.

Well done to Jacob, who has won an Arkwright Engineering Scholarship thanks to the hard work he put into a sustainability project and application, supported by our STEM coordinator, Miss Lowson.

I'm also proud of the amazing contribution from Rebecca, one of our students in Year 12. For years, she has campaigned for the environment. She co-devised and performed a piece about her generation's needs and responses to the climate emergency, which has toured nationally, including at COP26 in Glasgow.

We recently ran Chemistry Week – three lunchtime sessions for keen young scientists, who successfully created plastic from potato starch. Congratulations too to our Cotswold sporting stars, who are gaining recognition in county teams and national performance centres, including for hockey, swimming and netball.

Following the recent open evening for Year 11 students, the form to apply for places from 2022 at our outstanding Sixth Form is now live. Please visit our website to apply.

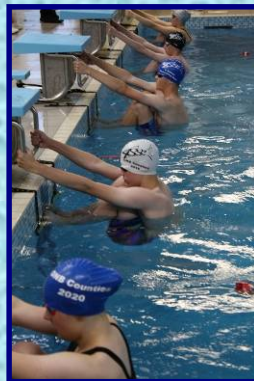
Many families will join our Carol Concert at St Lawrence Church in Bourton on 2nd December. I hope you will enjoy the music and readings by students and staff that give the event its lovely character. I'm sure front doors in Bourton and around the Cotswolds will be beautifully decorated after the PTA's wreath-making workshop on 1st December, held in school. PTA volunteers also continue to make and sell cakes at the National Trust's Chastleton House, so thank you to all those involved in these delicious teas. We all appreciate the great contribution that this team of parents, carers and staff volunteers make.

Enjoy the festive season!

**Will Morgan,  
Headteacher**



#### 4 Shires Swimming Club



Swimmers have been busy competing at events in Coventry, Aylesbury and Oxford, along with our own Club Champs in October. We have seen some great results and plenty of PBs which is all good preparation for the 2022 County Championships.

We are now pleased to offer swimming sessions on a Tuesday evening at Chipping Norton Leisure Centre.

As Christmas approaches we have some fundraising events planned; quiz, wreath-making and our Christmas party fun swim to mark the end of term.

If you are a keen swimmer and are looking to compete or are simply looking to develop your fitness and swimming skills then please contact us to book onto one of our Trial sessions. You can do this via our website - <http://www.4ssc.co.uk/join-us> or email us at [membership@4ssc.co.uk](mailto:membership@4ssc.co.uk) for details of our next Trial sessions.

**Lucy Warner**



#### Christmas Storytelling Event

We are holding a Christmas Storytelling Event, at 3.30pm on December 8th 2021 in Rainbow Refreshments at Shalom, Moore Road, Bourton.

Join us for another wonderful 'Doggy Adventure' afternoon with Charlie, Rachel and their doggy family - including Romanian rescue dog, Rocco, now a happy Cotswold resident!

A free event with stories, fun and refreshments. Opportunity to buy a book and get it signed. Perfect for primary age children.



Pre-booking required. Book your free place now by phoning

[01451 810222](tel:01451810222)

**Helen Pike**



## Local Groups and Organisations for the YOUNGER GENERATION

Baby Gymnastics 0-18months	Caroline (Cotswold Clubhouse) 263130
Beavers	bourton beavers@gmail.com
Bourton Road Runners Juniors	Richard Buffton 831733 / 824379
Bourton Vale Cricket Club	Lucy Gillespie 07949227128
	craiglucygillespie@yahoo.com
B'n Vale Equestrian Centre	Leanne Launchbury 821101
Bourton Vale Tennis Club	Kingsley Harris 07879 644218
	www.bourtontennisclub.org
Brownies	Steph 07941502222
Bumblebeez babies & pre-school tots	Rowena King 821282
Children's Jujitsu	Andy or Hayley 07951587398
Cubs	Nick Hawke 01451 822786

Guides	Steph	07941502222
Hockey	Tracy Dixon	07813187933
Little Hurricanes (Babies & Toddlers)	littlehurricanes@hotmail.com	
Pre-School	Lisa Sorley	07950 048066
Pre-School Gymnastics	Caroline	263130
Rainbows	Steph	07941502222
Recreational Gymnastics	Caroline	263130
Scouts	Ricky Campbell	810977
	richard.campbell600@ntlworld.com	
4Shires Swimming	Jo Shaw	membership@4ssc.uk.uk
Taekwon-do	Lee Chapman	01285 640500
Youth Club	Linda Hicks	824225

### Bourton Primary Academy

We have had a very busy start to our school year and have taken part in performances at the Music, Art and Food Festival in September as well as our own Harvest Festival in St. Lawrence's church. It feels like a lot has changed since we were last able to perform, but it has been wonderful to hear singing throughout our school again and to be able to celebrate in the church. By the time this is printed, we shall be practising our KS1 nativity and our KS2 carol concert ready for our Christmas celebrations in the last week of term.

On a sporting note, some of the Year 5 and 6's have taken part in a hockey tournament at The Cotswold School and some of the Year 3 and 4's attended an Athletics event at Stow-on-the-Wold Primary School. The weather was on the chilly side, but it didn't stop the children from running and skipping about. We are pleased to report that the children were impeccably behaved as well as really enjoying competing alongside their peers again. Many thanks to all of the parents who volunteered to help drive the children to and from the event.

We have recently welcomed Ofsted into school and although the official report has not been published, we were pleased to receive many positive comments. From the parent surveys,

100% of those parents said they would recommend our school to other parents and that their children feel safe. We were, as always, incredibly proud of their positive attitude and behaviour.

We are currently able to have visitors in school, so if you would like to volunteer and listen to children read for an hour a week, then please contact the school office ([admin@bourton.school](mailto:admin@bourton.school)) and this can be arranged.

**Tori Teague,  
Senior Leader**



### **PLUMBING AND HEATING**

Locally based company for all your plumbing needs

**0 7 5 7 0 1 3 6 8 0 1**

**info@bayden.co.uk**

**www.bayden.co.uk**

©Bayden Limited 2021



For all your  
property and garden  
maintenance needs



[/bourtonhandyman](https://www.facebook.com/bourtonhandyman)  
[@BourtonHandyman](https://www.instagram.com/BourtonHandyman)  
[bourtonhandyman@gmail.com](mailto:bourtonhandyman@gmail.com)  
[www.bourtonhandyman.co.uk](http://www.bourtonhandyman.co.uk)

☒ £2m Public Liability Insurance

## Examinations Invigilator

Casual, Term time only

Pay: £9.25 per hour

Ongoing recruitment to expand our existing team

Reports to: Examinations Officer

With immediate effect, we are seeking to appoint reliable and confident people to join our team of Examination Invigilators.

Examinations predominantly take place in May and June each year, but also November, January and March.

A number of Invigilators are required to support each exam and we are looking to increase our bank of available staff. Full online training will be provided.

### WE ARE LOOKING FOR INDIVIDUALS WHO:

- can be flexible, patient and are able to stand for long periods of time
- are alert and able to deal with a variety of situations
- are willing to undertake online Invigilator training
- can be a team player, have strong communication and empathy skills as well as the ability to work on their own

### WE CAN OFFER YOU:

- The opportunity to be part of a dedicated team within a caring school environment
- Employee benefits, including an Employee Assistance Programme & Cycle to Work scheme
- Flexibility to work when suits
- Free onsite parking

### How to apply

Download an application form from the school's website: [cotswold.gloucs.sch.uk/recruitment](https://cotswold.gloucs.sch.uk/recruitment)

Please read our 'Notes to applicants' before applying. Send your application to Mrs H Price, Personnel Manager, via email or post. CVs will not be accepted.

The Cotswold School is committed to safeguarding and promoting the welfare of young people. Any offer of employment is subject to a satisfactory enhanced DBS disclosure.

### Contacts

T: 01451 820554  
E: [personnel@thecotswoldschool.co.uk](mailto:personnel@thecotswoldschool.co.uk)  
W: [cotswold.gloucs.sch.uk](https://cotswold.gloucs.sch.uk)

The Cotswold School  
The Avenue  
Bourton-on-the-Water  
Gloucestershire  
GL54 2BD



## Gloucestershire Wildlife Trust



Gloucestershire Wildlife Trust launched a new engagement platform, 'WilderGlos', to inspire residents in Gloucestershire to connect with nature and take positive environmental actions.

In 2019, all councils in Gloucestershire declared a climate emergency, committing to net zero and cutting emissions 80% by 2030. 'WilderGlos' will help residents take action to protect wildlife and their wider environment, and contribute to reaching this net zero target.

Residents can earn Green Points by taking part in activities that help to protect wildlife, the environment and encourage sustainable choices. Competing as individuals or as part of their local town or village, residents will aim to top the leader board, with the chance to win monthly prizes.

There will be over 25 activities available to residents ranging from growing a wild patch in their garden to helping promote insect growth, organising a local litter pick, taking a carbon quiz or submitting a photo of their zero-waste shop.

Will Masefield, Head of Engagement and Learning, GWT, says:

"We're excited about the idea of people joining us on a journey to safeguard nature, which needs us now more than ever.

These personalised dashboards will help us all to understand that our actions, however humble they may be at first, are meaningful when many people get involved."

Launched in partnership with Jump, the UK's leading supplier of sustainability and wellbeing, 'WilderGlos' will empower individuals to take positive actions to create lasting and effective behaviour change.

To get involved or for more information, please visit:

[wilderglos.greenrewards.co.uk](https://wilderglos.greenrewards.co.uk)



## Bourton Podiatry Clinic

### HEALTHY FEET ARE HAPPY FEET

- Professional nail care
- Diabetic foot care
- Corns, callous, hard skin
- Verruca treatment
- Painful heels and feet treatment
- Fungal infection
- Footwear advice

TO BOOK AN APPOINTMENT, PLEASE CALL  
**01451 824301 07557 766651**  
OR GO ONLINE  
[WWW.BOURTONPODIATRY.COM](http://WWW.BOURTONPODIATRY.COM)

Units 6-7, Upper Slaughter Business Centre,  
Upper Slaughter, GL54 2JJ



## CLARKE & HUMPHRIES

MODERN BUILDERS, PROFESSIONAL MAINTENANCE, TRADITIONAL VALUES

One of the Cotswolds Premier Building Companies is also offering a

## PROFESSIONAL HANDYMAN SERVICE

Experienced multi-skilled tradespeople ensuring excellent value for money and reliability...

# 01451 822 577

[maintenance@clarkeandhumphries.co.uk](mailto:maintenance@clarkeandhumphries.co.uk)



**The Mobility Store**

**MAKE LIFE EASIER**

- Large range of Mobility Aids
  - PPE • Hire services
  - Wheelchairs
- Mobility Scooters and repairs
  - Stairlifts
- Rise and Recline furniture
  - Adjustable beds
- Cosyfeet shoes and slippers

**FREE HEARING HEALTH CHECK**





**THE MOBILITY STORE SWINDON**  
7 Clive Parade  
Cricklade Road,  
Swindon SN2 1AJ  
01793 701313  
swindon@thehearingandmobilitystore.co.uk

**THE MOBILITY STORE MARLBOROUGH**  
56 George Lane,  
Marlborough SN8 4BY  
01672 511550  
wiltshiremobility@mail.com

**THE MOBILITY STORE WROUGHTON**  
6 Devizes Road  
Wroughton SN4 0RZ  
01793 815083  
wroughtonmobility@mail.com

**THE MOBILITY STORE BOURTON ON THE WATER**  
Lansdowne  
Bourton on the Water GL54 2AR  
01451 810088  
bourtonmobility@mail.com

**Motability**  
The leading UK charity for disabled people

**FREE LEVEL ACCESS PARKING AT ALL STORES**  
[www.thehearingandmobilitystore.co.uk](http://www.thehearingandmobilitystore.co.uk)

**CLOCK STOPPERS CLEANING SERVICES LTD**

*Why not JOIN OUR TEAM? We're Part-Time Vacancies*

**Cleaners Available!**

Based in Bourton-on-the-Water. We're an established fully insured company, employing local staff with extensive experience and references.

Just give us a shout...

**014 51 61 71 81**

[cleaning@clock-stoppers.com](mailto:cleaning@clock-stoppers.com)

## MINDSONG & SING2REMEMBER

Following the launch of our Monday mornings sessions in October our group is going from strength to strength. We have great fun singing songs familiar and not so familiar, remembering singers such as Elvis, Bob Dylan, Doris Day and so on, we dip in to the world of the Musical and pop back to our youth with traditional songs we learnt at school and so on!

We welcome –

\* Anyone with dementia living at home and those who care for them.

\*Anyone who would enjoys a regular singing group which also offer help and support from community workers.

\*Anyone who loves to sing but no longer feels comfortable singing in a more formal choir.

\*Anyone experiencing loneliness and isolation.

We meet at the GMCC on the first and third Mondays of the month ( plus hopefully any fifth Mondays such as in November) at 10.30am, starting off with a few fun exercises to relax and then sing for an hour and finish off the morning with coffee, biscuits and sometimes cake and of course chat!

We look forward to welcoming you to the group.

More details from Janne Bishop – 01451 821216, [bishopdjk@aol.com](mailto:bishopdjk@aol.com), or pop along on one of the Mondays when we meet.

## Fun "Christmas Post" Quiz

Courtesy of [www.kensquiz.co.uk](http://www.kensquiz.co.uk) Answers on page 15

1. Which country introduced the first special Christmas stamp in 1898?
2. What company was founded in 1907 by Joyce Hall in Nebraska?
3. The UK Christmas stamps in 1993 were designed to commemorate the 150th anniversary of which classic Christmas book?
4. In which year did the UK first issue a special Christmas stamp?
5. In which village does Postman Pat deliver the Christmas mail?
6. Who sent the first personalised photo Christmas cards in 1891 while she was touring in Scotland?
7. What postcode was introduced by the British Post Office in 1999 for Santa's workshop?
8. Who were the authors of the children's book "The Jolly Christmas Postman"?
9. The small British village of Bethlehem gets visitors every Christmas who want their Christmas cards franked with the village name. In which county would you find this Bethlehem?
10. Who produced the world's first commercial Christmas card in 1843?
11. "With Every Christmas Card I Write", is a line from which famous Christmas song?
12. Which organisation launched the first charity Christmas card in 1949?
13. By what name were Victorian postmen known as a result of their red uniforms?
14. What postcode is used in Canada for letters to Santa?
15. Which Norfolk singer, who died on Christmas Eve 2000, was known as The Singing Postman?
16. The viewers of which TV programme designed the UK's first Christmas stamp?
17. When first class post was first introduced in 1968, how much would it cost to send a Christmas card by second class post?
18. The song "Please Mr Postman" was which group's debut single on the Motown label?
19. Which US president sent the first official White House Christmas card?
20. Which Nick Park creations were featured on the 2010 UK Christmas stamps?



# SAFE ROOF & EXTERIOR CLEANING

Local, trained professionals

**We Clean...**

**Roofs - Gutters - Render - Stone  
Driveways - Patios - And more**



**DOFF**



**CHAS®**

**T: 01386 40213**

**M: 07824 323056**

**info@aquacleanservices.co.uk**

**www.aquacleanservices.co.uk**

**AQUA CLEAN**

Exterior Cleaning

**10% OFF  
ROOF  
CLEANS**

# STOW TRAVEL

YOUR LOCAL INDEPENDENT TRAVEL AGENT  
SELLING HOLIDAYS FROM THE HEART OF THE COITSWOLDS SINCE 1983

**Open now in Sheep Street,  
Stow on the Wold**

TEL: 01451 810255  
stowtravel@holidaysplease.com

**Book a Package,  
Use a Travel Agent, Travel  
with Confidence**

**We look forward to  
sending you packing !!**

Pop in or visit our website  
[www.stowtravel.co.uk](http://www.stowtravel.co.uk)

With over 40 years experience you  
can be sure that your only issue will  
be what to pack!



01451 810255  
stowtravel@holidaysplease.com  
[www.stowtravel.co.uk](http://www.stowtravel.co.uk)  
ABTA P6354

**STOW TRAVEL**  
Sheep Street, Stow on the Wold, GL54 1AA

## Bourton Vale Gardening Club

**A garden is a friend  
you can visit anytime**

Thank you to everyone who came along to our November meeting on a grey drizzly evening.

Congratulations to Kathleen Cowie who won the November seed head competition.



Planting a beautiful garden and trying to help our planet and wildlife can be a challenge. Growing without chemicals, going peat free, adapting to climate change, uncertain seasons and reducing our carbon footprint as gardeners, can be a minefield of decisions. The RHS suggest, choosing locally grown or home grown, rather than imported flowers as a UK grown bouquet can reduce your carbon footprint by 7.9kg per bunch! Choosing seasonal UK fruit and veg, making your own compost, water butts instead of mains water, planting trees and less hard landscaping, dividing and sharing perennials, save your own seed and grow more plants to absorb carbon, can all help the planet, our wildlife and us. Harriet Rycroft, our November speaker, highly recommended Sylva

Grow peat free compost, which is available at both Burford Garden Company and the Fosseway Garden Centre.

For our festive December 8<sup>th</sup> meeting at St Lawrence Church, we are delighted to welcome Christine Ramsey who will be sharing expertise with her talk "Candles at Christmas" and demonstrating Christmas arrangements. Christine works with home grown plants and is an accredited NAFAS demonstrator. We also delighted that Christine will be donating the finished designs to the monthly raffle too. We will be serving mulled wine and members and non-members are very welcome to join us.

The December competition is a Christmas Tree decoration of your choice, it could be felted, knitted, a decorated cone, as imaginative as you wish and one for all the family to take part in.

Happy Gardening and Wildlife Watching

**Julie Huckle**

## IRENE'S CHARITY KNITTING CIRCLE

Our first meeting in November was a very cheerful occasion.

We really appreciated your efforts and contributions during the lock-down period when the Covid Pandemic brought a standstill to a more normal life for many of us. We are very grateful to all of you who continued to provide so many items for distribution to local hospitals and care homes during this time.

We can now arrange distribution of many items locally and to Syria at last.

Christmas is nearly upon us and we hope to be able to bring some cheer to those in need at this time of year.



In the meantime we hope that the New Year will bring new promise for success in controlling the Covid Virus; more comfort to families and the opportunity for us all to meet up with them and friends again.

Our next meeting will take place on Wednesday, 8th December, at the Bourton Community Centre Cafe in Moore Road, from 10:00 - 12:00 noon. Coffee/Tea and Biscuits will be served and we hope to see all our members there. New members will be welcome to join us

With our very best wishes

Irene and Peter

**For further information contact:**

**Irene Summers**

**Tel: 01451 798718**

**Peter Boxall**

**Tel: 01451 824175**





## Bourton Panto Group

Rehearsals are steaming ahead on the next production and it's all beginning to come together. They're *almost* singing in tune and *almost* getting their lines in the right order. By the 2nd February 2022 we'll be pitch perfect so why don't you pop online and buy a ticket? To book tickets for the next show, 'A Panto Puzzle' go to [www.ticketsource.co.uk](http://www.ticketsource.co.uk). You can also use the link on the main page of our website [www.bourtonpantogroup.co.uk](http://www.bourtonpantogroup.co.uk) or there's a link to Ticketsource on our Facebook page where you can choose your own seat for the performance of your choice and wait for the fun to begin. You won't want to miss our 40th anniversary performance.



If you want something to get you in the mood for the festive season and you're quick you've still got time to book a table and come and take part in our fun Christmas quiz taking place on 3rd December 2021. The questions are being compiled by our own quizmaster Emma who, as I'm writing this, is sitting under the tree with a mince pie and a glass of sherry to help her concentrate on everything Christmassy. Emma knows a lot about the festive season but maybe you know more so why don't you come along and find out? It's taking place on

Friday 3rd December the doors will open at 6.45pm and the quiz starts at 7.30pm. Tickets are £16 for a team of 4 people which will include nibbles. Wine, beer and soft drinks will be on sale during the evening. There's still time to book, ring Margaret Strevens on 077919 17684.

**Jackie Denham**

### Stormy Weather

The sky is black and heavy,  
Thunder like Morse code breaks in and out,  
Animals huddled under shaken trees,  
Waiting till its over to go back out.

As the rain hits the warm ground,  
A vapour of relief releases itself,  
The sun breaks through with a glare,  
Colourful rays of a rainbow shows itself.

Now the damage of the storm can be seen,  
Broken branches lay homeless on the ground,

Dry gardens are now slushy wet,  
Plenty of food for animals lays across the ground,

The storm has gone.

**Carol Groom (Paxton)**

### Christmas and New Year collections 2021/22

There is no change to waste, recycling, food waste and garden waste collections over the Christmas and New Year period. Crews will be out collecting Monday to Friday as normal, including on the three bank holidays (Monday 27 December, Tuesday 28 December and Monday 3 January).

Cotswold District Council



## Guided Walks with the Cotswold Voluntary Wardens



The guided walks programme has restarted and Cotswold Wardens are once again leading the public on walks in a safe and careful way. Details of the walks available are described on the website (below). Please check walk details carefully including whether booking is necessary.

<https://www.cotswoldsaonb.org.uk/visiting-and-exploring/guided-walks/>

**Ford via the medieval village of Pinnock – Tuesday 7<sup>th</sup> December – Moderate 3.5hr 7ml.** A very enjoyable walk with some interesting history. Lunch available at the excellent Plough Inn, Ford, following the walk. Bring a snack/drink. **Start:** 10.00 am Layby opposite the Plough Inn, Ford. OS Map ref: SP 088 294.

PLEASE use appropriate footwear as some walks may be steep and muddy in places. EASY - Length may vary but terrain is mainly flat (level); MODERATE - includes some hills and rough ground. STRENUOUS – may be rough underfoot and ascents and descents may be steep. We welcome guide and hearing dogs - sorry, others not allowed.

Walks are free although we do invite donations to help fund our conservation and improvement work.

### The Bourton Browser

is printed by

**Peter Dunford, 01608 658104, [petedunf@aol.com](mailto:petedunf@aol.com)**

**Stow physio at bourton**

**For a friendly, professional physiotherapy service**

- Sports Injuries
- Back/neck pain
- Neurology
- Post-surgery
- Women's health
- Pilates

**and all general physiotherapy**

**01451 822660**

Lucy Walmsley | Vivien Baxter  
Amy Hayman-Joyce | Kate Krzywiec

[www.stowphysio.com](http://www.stowphysio.com) | [info@stowphysio.com](mailto:info@stowphysio.com)  
Hawthorne Court, Bourton Industrial Park,  
Bourton-on-the-Water, GL54 2HQ



Servicing specialists covering all models of Land Rover @ and Range Rover @ vehicles. MOTs arranged & work carried out. Servicing\*, diagnostics, repairs brakes, parts & accessories.



[www.bourtonlr.com](http://www.bourtonlr.com)

**01451 810 364**

Bourton-on-the-Water  
Gloucestershire  
GL54 2AR

LAND ROVER @ & RANGE ROVER @ VEHICLE SPECIALIST



\* HAVING YOUR VEHICLE SERVICED WITH US WILL NOT INVALIDATE YOUR WARRANTY



## Dave's Aerials & Satellites

**Credit & debit cards accepted.**

Optical fibre, Networking & European Satellite Specialist.

All types of aerial, satellite & CCTV camera work undertaken.

**Thank you for supporting your local engineer for over 35 yrs.**

**Call free on 01451 495014**

**T. 07928 203589 E. [aerialdave@hotmail.co.uk](mailto:aerialdave@hotmail.co.uk)**

**[www.davesaerialsandsatellites.co.uk](http://www.davesaerialsandsatellites.co.uk)**



## HOUSEKEEPER/CLEANER REQUIRED IN WYCK RISSINGTON

Please send details of  
previous experience and references  
with your application to:

**[cotswoldgardener100@gmail.com](mailto:cotswoldgardener100@gmail.com)**

### Tractor Run



I would like to thank everyone that took part in our Tractor run this year. With a great turnout of 40 Tractors, some of the drivers dressed up adding to the fun. After a 30 mile trek round the country lanes of the Cotswolds, a good day was had by all. We have raised £691.38 which will be divided between Sunflowers Suicide Support and Cancer Research.

**Thank you all. Carol Groom**

St John the  
Baptist Church

Great Rissington



## CHRISTMAS TREE FESTIVAL 2021

FRIDAY 10<sup>th</sup> DECEMBER

Join us for Mulled Wine from 6.00pm - 7.00pm

SATURDAY, 11<sup>th</sup> DECEMBER 10.00am - 5.00pm

SUNDAY, 12<sup>th</sup> DECEMBER 12.30am - 5.00pm

Tea, Coffee and cake available!

Children - come and make a Christingle on Saturday

Christingle Service on Sunday, 12<sup>th</sup> December

11.00am All welcome

Trees supplied by Phipp  
Feeds

Select your favourite tree!

[churchwardenstjohns21@gmail.com](mailto:churchwardenstjohns21@gmail.com)

### Combe Mill Christmas Market, OX29 8ET

After a very difficult year Combe Mill will be holding their Annual Christmas Market on 11<sup>th</sup> December 2021, 10am to 4pm.

All funds raised will go to Combe Mill Society's charitable aims of Community Education. Don't miss out, come along and bring the children to 'Listen to a story with Santa' browse the variety of Market Stalls, enjoy a BBQ, Mulled Wine & Chestnuts, Tea Room Open, Raffle, Tombola and Gift Shop.

Find an excellent selection of Christmas gifts available. Combe Mill's blacksmiths will be in the Forge to make pokers, with VIEWING ONLY in the Mill, no machinery will be operating. Blacksmiths items on sale, made by our very own blacksmiths, make a very popular gift for Christmas.

Free Entry & Car Parking.

Combe Mill, Blenheim Estate Sawmills, Long Hanborough, Oxon. OX29 8ET



**COTSWOLD BREW CO**

COLLEGE FARM,  
STOW ROAD,  
BOURTON-ON-THE-WATER,  
GL54 2HN

f i t  
**COTSWOLDBREWING**  
01451 824488

**INDEPENDENTLY BREWED.  
PREMIUM QUALITY.  
COTSWOLD LAGER.  
EST. 2005**

**SHOP & TAPROOM**

Our brewery is open 7 days a week for you to purchase your favourite Cotswold Brew Co lagers.

**BREWERY TOURS**

Learn more about lager, taste our full range, and have a stroll around the Cotswold Brew Co brewhouse.

**HOME DELIVERY**

Get our lager delivered directly to your door. Shop the range on our website.

**WWW.COTSWOLDBREW.CO**

**COTSWOLD BREW CO**

Gloucestershire  
COUNTY COUNCIL

*Looking to join a  
Book Club?*

**Stow Library is inviting any  
book-lovers to join our new book club**

Are you over 18 and love books?  
This could be the one for you!

**FRIDAY 10th DECEMBER 2021**

**4.30pm - 6.00 pm**

We will be meeting on a Friday once a month  
If you are interested please contact Niki Williams on  
01451 830352 or email [niki.williams@gloucestershire.gov.uk](mailto:niki.williams@gloucestershire.gov.uk)

The Library



**DESIGNER POOCH**  
- your local dog groomer -

C&G Qualified dog groomer with over 20 years experience

Nail clippings available from as low as £5!

Ring now for bookings!  
t. 01451 822984  
m. 07805 415474

Dog products also available!

1A Victoria St, Bourton-on-the-Water, Cheltenham GL54 2BU

**Door 2 Door Pet Supplies**

**\*Free Local Delivery\***

**Food (Dry, Wet & Raw)**

We are stockists of the following Raw Foods:  
Cotswold Raw, Natural Instinct, Natures Menu, Nutriment, Paleo Ridge, PurrForm (Cat), Totally Natural.

**Treats Supplements Toys Beds**

**Collars, Leads, Headcollars & Harnesses**

**\*We can order most items in, if not in stock\***

Unit 1 Old Station Yard Business Centre  
Bourton Link Bourton-on-the-Water GL54 2HQ  
Tues, Weds & Fri 9am - 1pm Tel: 01451 497097  
E: sales@door2doorpetsupplies.co.uk Est June 2015

**www.door2doorpetsupplies.co.uk**

**THE KATE'S HOME NURSING**  
CHRISTMAS CAROL CONCERT

St. Lawrence's Church  
Bourton-on-the-Water

FRIDAY 17th  
DECEMBER 6:30pm

**Seasonal music, readings and carols**

**Richard Coxon** Tenor  
**Katy Treharne** Soprano  
**Imogen Cox** Violinist  
**David Harrington** Pianist

**Tickets: £15**

Tickets available through Gabrielle Kubale  
Email: gabiellekubale@hotmail.com  
Or at: The Borzoi Bookshop, Stow-on-the-Wold

[www.kateshomenursing.org](http://www.kateshomenursing.org)  
Registered Charity No. 1059680

**Kate's Home Nursing**  
A Special Kind of Palliative Care

- Answers to Christmas Post Quiz on page 11**
1. Which country introduced the first special Christmas stamp in 1898? **Canada.**
  2. What company was founded in 1907 by Joyce Hall in Nebraska? **Hallmark cards.**
  3. The UK Christmas stamps in 1993 were designed to commemorate the 150th anniversary of which classic Christmas book? **A Christmas Carol by Charles Dickens.**
  4. In which year did the UK first issue a special Christmas stamp? **1966**
  5. In which village does Postman Pat deliver the Christmas mail? **Greendale.**
  6. Who sent the first personalised photo Christmas cards in 1891 while she was touring in Scotland? **Annie Oakley.**
  7. What postcode was introduced by the British Post Office in 1999 for Santa's workshop? **XM4 5HQ.**
  8. Who were the authors of the children's book "The Jolly Christmas Postman"? **Janet & Allan Ahlberg.**
  9. The small British village of Bethlehem gets visitors every Christmas who want their Christmas cards franked with the village name. In which county would you find this Bethlehem? **Carmarthenshire, in Wales.**
  10. Who produced the world's first commercial Christmas card in 1843? **John Horsley.**
  11. "With Every Christmas Card I Write", is a line from which famous Christmas song? **White Christmas.**
  12. Which organisation launched the first charity Christmas card in 1949? **UNICEF.**
  13. By what name were Victorian postmen known as a result of their red uniforms? **Robins.**
  14. What postcode is used in Canada for letters to Santa? **H0H 0H0.**
  15. Which Norfolk singer, who died on Christmas Eve 2000, was known as The Singing Postman? **Allan Smethurst.**
  16. The viewers of which TV programme designed the UK's first Christmas stamp? **Blue Peter.**
  17. When first class post was first introduced in 1968, how much would it cost to send a Christmas card by second class post? **4d (equivalent to less than 2p in modern currency).**
  18. The song "Please Mr Postman" was which group's debut single on the Motown label? **The Marvelettes.**
  19. Which US president sent the first official White House Christmas card? **President Eisenhower (1953).**
  20. Which Nick Park creations were featured on the 2010 UK Christmas stamps? **Wallace and Gromit.**

LOCAL GROUPS AND ORGANISATIONS			Numbers without area code are 01451		(For amendments call 822431)
Archery Club	GRArcheryClub@gmail.com		History Society	Sue Roberts	822230
Badminton Club	clclare@gmail.com		Hockey	Tracy Dixon	07813187933
Bell Ringers, BOW	Stephanie Hemming	810996	Lunch Club (B'n Vale Cricket Club)	Sam	01608 692811
Bell Ringers, Gt Ris	Sheila Jesson,	820395	Men in Sheds Membership	Rob	01608 698557
Bourton-on-the-Water WI	Jean Furner	810740	Men in Sheds Orders	Keith	01451 831886
Bourton Panto Group	Jan Close	831911	Moreton Bowls Club	Brenda Dix	821020
Bourton Probus Club	David Tebbutt	821098	North Cotswold Gymnastics Club	Caroline Gill	01451 263130
B'n Road Runners	Lynn Hudson	01242 820920	OPEN 4U		824225
Bourton Rovers Football Club	Brian Hall	07901106900	Pilates	Robert Cox	07500 188445
Bourton Vale Cricket Club	Lourenza Hargreaves	07375 033609	Rotary Club Nth Cotswolds	Steve Whincup	07488 365908
Bourton Vale Tennis Club	www.bourtontennisclub.org		Royal British Legion Bourton	Bill McKenzie	824303
Brass & Silver Bands	Stephanie Hemming	810996	Rural Cinema	Mollie Wise	822365
Bridge Club, Northleach	Tim Morris	01285 750288	Scottish Dancing Group	Brenda Parsons	07970 281929
Community Group	Bridget/Lorna	01608 652019	Short Led Walks	Carol Price	810305
Cotswold Fosseway Lions Club		0845 833 9825	T'ai Chi	Valerie Ward	07779 746346
Embroiderers Guild	Julie Smith	01608 651006	u3a Bourton & District	Group Mobile	07783 235320
Gardening Club	Antoinette Green	824141	Windrush Carers Support Group	Barbara Newstead	821523
Glos. Advanced Motorists	Rod Harrison.	821605	4 Shires Swimming Club	Jo Shaw	membership@4ssc.uk.uk

## W. J. Wright Funeral Directors & Bereavement Care



Bourton-on-the-Water  
Telephone: 01451 810700

Stow-on-the-Wold  
Telephone: 01451 831829

info@wjwrightfunerals.co.uk

Personal Caring 24 Hour Service  
Private Chapel of Rest  
Prepaid Funeral Plans



Rachael Pickard - Funeral Manager

### Bourton Library

The George Moore Community Centre,  
Moore Road, Bourton-on-the-Water,  
GL54 2AZ. **01451 820964**

**Opening Hours** check the website or  
phone us. Friendly staff & volunteers.  
Internet access.

[www.gloucestershire.gov.uk/libraries](http://www.gloucestershire.gov.uk/libraries)

Hayley Carter 01451 830352

### Rates and Dates for advertising in the *BOURTON BROWSER*

6 x 9 cm per mth £30, per 3 mths £65, per 6  
mths £125, per 12 mths £235. 9 x 12 cm  
per mth £60, per 3 mths £130, per 6 mths  
£240, per 12 mths £470. See page 1 for  
deadline. For full details & to book email :  
[team@bourtonbrowser.co.uk](mailto:team@bourtonbrowser.co.uk) or go to our  
website [www.bourtonbrowser.co.uk](http://www.bourtonbrowser.co.uk) State  
size required & attach advert as a jpeg or  
pdf. I will confirm **if** space is available or you  
may call 01451 822431 to discuss. Advertising  
spaces are very limited, **early booking &  
prompt payment is essential.** **Delivery**—We  
print 2300 copies & aim to deliver to every  
house in Bourton-on-the-Water & Clapton-  
on-the-Hill. **Ray Dodd, Advertising Manager**

### ABOUT THE *BOURTON BROWSER*

All articles received will be printed wherever  
possible in the magazine & on the website,  
however we reserve the right not to print  
anonymous letters or anything of a defama-  
tory or controversial nature. We have a  
limit of 300 words per article. If your con-  
tact details appear in the Bourton Browser  
they will be on our website copy. If you do  
not want this to happen tell us. Unless we  
hear from you we will assume consent. The  
views of contributors to the Bourton  
Browser may not necessarily be those of the  
Editor, nor can the Bourton Browser accept  
any responsibilities in connection with any  
companies or organisations mentioned.

### IMPORTANT TELEPHONE NUMBERS

Doctors Surgery	01451 820242
Out of hours GP Services	0300 421 0220
NHS Dentist emergencies	0300 421 6440
Appointments / enquiries	01242 215025
Mr Speechley	01451 820306
Mr Dannhauser	01451 821268
Moore Friends Sandra Morgan	01452 821212
George Moore O/P Clinic	0300 421 6940
Moreton-in-Marsh Hosp	03004 218770
Cheltenham Gen Hosp	03004 222222
Cirencester Hospital	0300 421 6200
Minor Injuries (Ciren. Hosp)	01285 884553
Police (emergency) 999 (non emergency) 101	
Stow Police Station	01452 907274
Open Monday – Friday 9.30am – 2.30pm	
Action Fraud	0300 123 2040
Crimestoppers	0800 555 111
Citizens Advice Bureau (CAB)	0808 800 0511
Thursdays, by appointment only, at Moreton Area Centre, High St, Moreton,-in-Marsh.	
Samaritans	01242 515777
Bourton-on-the-Water Parish Council	
9am-3pm Monday-Friday	01451 820712
Cotswold Dist Council	01285 623000
Dog Warden	01285 623000
Glos County Council	01452 425000
Bourton Village District Councillor	
Nick Maunder	07866 885468
Bourton Vale District Councillor	
Richard Keeling	01451 821146
County Councillor	
Paul Hodgekinson	01452 425344
Emergency Calls & Hotlines	
Electricity SSE	0800 0727282
Power Cuts	105
Gas Emergency	0800 111999
Thames Water	08000093964
Environment Agency	0800 807060
Pulhams Coaches (local)	01451 820369
Volunteer Help Centre	01608 651115
Stow Veterinary Surgeons	01451 830620
Dragon Vets, Upper Rissington	01451 600891
Funeral Directors	
WJ Wright	01451 810700
Solicitors Kendall & Davies	01451 820277

### Taxi Services

Limozena	01451 820972
Genny Stallabrass	01451 822665
Tony Knight	07887 714047
Private Hire	01451 822190
McTimoney Chiropractor	01451 509125
Tina Hamer	07884 312559

### Chiropodists

Derek Brookes	01451 822540
Bourton Podiatry	01451 824301

### Foot Health Practitioners

Paul Brookes	01451 810981
Ramona Gogolos	07884 318091

### Acupuncture

Sue Britton	01451 821927
Andrea Bailey	07702 928139

### Cotswold Osteopaths

Reflexology Adrienne Halliday	07885 730495
-------------------------------	--------------

Annabel Drury	01451 828118
---------------	--------------

### Physiotherapy & Acupuncture

Lucy Walmsley	01451 822660
---------------	--------------

Menopause Solutions Barbara-Ann	07788 743738
---------------------------------	--------------

### Church of England

Rev Rowena King	revrowena@gmail.com
-----------------	---------------------

Baptist Church Office	01451 824225
-----------------------	--------------

### Catholic Church

Father Stephen Lambert	01608 674354
------------------------	--------------

Newsagent (Stow)	01451 830406
------------------	--------------

Community Wellbeing Service	01452 528491
-----------------------------	--------------

Bourton Post Office	01451 820220
---------------------	--------------

Bourton Library	01451 820964
-----------------	--------------

Bourton Primary School	01451 820458
------------------------	--------------

Cotswold School	01451 820554
-----------------	--------------

Tourist Information	01451 820211
---------------------	--------------

Bourton Leisure Centre	01451 824024
------------------------	--------------

Runnerbean Health & Fitness	01451 822541
-----------------------------	--------------

Chemist Rowlands Pharmacy	01451 820849
---------------------------	--------------

Mobility store	01451 810088
----------------	--------------

National Rail Enquiries	08457 484950
-------------------------	--------------

Jubilee Lodge	01451 823100
---------------	--------------

### Lloyds Bank Mobile visits to

George Moore Community Centre,  
Moore Rd, Bourton-on-the-Water.

**Monday 6<sup>th</sup> & 20<sup>th</sup> December**  
**10am-12.30pm.** 0345 601 6943