



BOURTON BROWSER



ISSUE NO 313

www.bourtonbrowser.co.uk

May 2025

DIARY DATES

- 1st Election of councillors to GCC, Bourton-on-the-Water/Northleach Division. **GMCC**, 7am-10pm. Remember to take photo ID.
- 3rd Barn Dance, **StLC**, 4.30pm-6.30pm, suitable for all. Free entry with donation to Christian Aid. See poster page 10.
- 5th & 19th Mindsong, Sing 2 Remember **GMCC**, 10.30am & 2.30pm. 07764 212506 or 01451 821216.
- 7th Sight Loss Advice Hub, **GMCC**, drop in 1-2pm, join social group 2-4pm. Call 01242 221170, or email info@insight-glos.org.uk See page 12.
- 7th Annual Parish Council meeting, 7pm, **GMCC**.
- 8th 80th Anniversary of VE Day Commemorations, music of the era, tribute, lighting of beacon, Village Green, 9.30pm. See PC notes & poster page 20.
- 9th & 23rd Dementia Friendly Cafe, **StLC**, 2-4pm, 07746 672726. See page 6.
- 9th Bourton Roadrunners 1 Mile Race, 7.30pm. Rissington Road & High St closures between 7.15pm-8pm. Full details on page 13.
- 12th Probus, "Titanic" by Paul Barnet. 10am, **GMCC**, See page 6.
- 13th WI, "Race Night", **VH**, 7pm, See page 6.
- 14th Irene's Charity Knitting Circle, **WP**, 10am-12pm. See page 6.
- 14th u3a Scrabble, **GMCC**. 2-4pm. 7341 094206. peterdaw-

Continued on page 2, column 1.

Baptist Church Hall = **BCH**
British Legion Hall = **BLH**
Cricket Club Pavilion = **CCP**
George Moore Community Centre = **GMCC**
Jubilee Lodge = **JL** Market Close = **MC**
North Cotswold Sale Room = **NCS**
St Lawrence Church = **StLC**
Victoria Hall = **VH** Willoughby Place = **WP**

Bourton-on-the-Water Parish Council Notes

BOURTON-ON-THE-WATER
PARISH COUNCIL



Notes from the Parish Council Meeting held on 2nd April 2025

Co-Option of new Parish Councillor: We are pleased to welcome Councillor Marina Millington to the Parish Council. We now have a full complement of 13 council members who will be in post for a further two years.

Coach parking, pick-up and drop-off: Gloucestershire County Council Highways and County Councillor Paul Hodgkinson updated that the signage and road markings for the temporary scheme on Meadow Way were expected to be put in place for the week before Good Friday.

SUSTRANS Bourton to Kingham Cycle Route: An update was received on the proposed route which would provide a connection to trains from Kingham to Oxford and London. However, the new SUSTRANS report will not be published until after the County Council elections in May.

Rye Crescent play area refurbishment: At the time of the meeting there were some contractor delays to project completion. However, it is hoped that the new play area will be ready soon after Easter.

Electronic Newsletter: This facility is now live on our website, so please sign up by scanning the QR code below:



80th Anniversary of VE Day Commemorations on Thursday 8th May: Please come to the village centre to support this important national occasion. Local businesses are being encouraged to offer fish and chip suppers in the evening at a discount cost (please see separate poster). There will be music from the era, a tribute and the lighting of a beacon on the Village Green at 9.30pm that evening.

Tourist Levy funding 2025-26: An agreed list of potential projects is being presented to Cotswold District Council who will undertake public consultation in June or July, so please vote for your favourite projects. The funding is for projects that mitigate the effects of tourism on the village.

Local Government Reorganisation and Devolution: This is currently a hot topic in all tiers of local government following the government's Devolution

Continued on Page 20

The *Bourton Browser* is run by volunteers & delivered monthly FREE to every household in the Village.

Go to the "Get in Touch" tab and then complete the contact form to send questions, articles (max.300 words), adverts & event details to the team.

Copyright © Bourton Browser 2025

The **DEADLINE** for Adverts & Articles for the June edition is **Noon on 15th May**

EAR CARE CLINICS

WWW.ECCLINICS.COM



SPECIALISTS IN

- Ear Wax Removal
- Hearing Assessments
- Hearing Aids

We specialise in wax removal, primarily using **microsuction** which is quick and easy as it uses very gentle suction to **remove wax**. We can also provide a **full hearing assessment** and supply digital hearing aids from leading manufacturers with the latest technology.

We are based in the **North Cotswolds** with clinics in various locations including GP surgeries and hospitals, please scan the QR code, visit the website or call on the number below for all our prices and further information.

Hearing assessments not available at all locations, please call, email or see our website for full details.



Please visit our website to book an appointment

07514 530070
www.ecclinics.com
admin@ecclinics.com

Continued from page 1 column 1

son790@icloud.com

- 14th Horticultural Club. "A taste of Chilli" by Mary Fenton. **BCH**, 7.30pm. See page 5.
- 14th & 28th Bourton Community Day Club, 10.30am - 2.30pm, **MC**, GL54 2HE. 01608 652019.
- 16th & 17th Tayler & Fletcher, Fine Art, Vintage & Interiors auction, from 9.30am, **NCS**, GL54 2AR. 821666.
- 17th Cotswold School, Duck Races & Cake Sale, The Green, 10am-5pm.
- 17th Coffee Morning, **StLC**, 10am-12 Noon, in aid of Christian Aid. See page 19.
- 17th & 18th Gift Fair, **VH**, 10am-5pm. All welcome.
- 19th Rural Cinema, "A Complete Unknown" Certificate 15, 2hrs 21mins, **VH**, 2.30pm & 7.30pm. Refreshments £1. 2pm & 7pm, £4pp or £12 family of 4 on door.
- 20th Blood Donor appointments, **BLH**, 1.10pm-4pm & 4:50pm to 6.45pm.
- 25th Car Boot Sale, in aid of Sunflowers Suicide Support, Manor Field, Station Rd, 10am-4pm, £10 a pitch. Bookings c.groom187@yahoo.com or 07906 789867. See page 17.
- 25th Farmers Market, **BLH** Car Park, GL54 2AR. 8.30am-12.30pm 07980 080073.
- 28th u3a, AGM, **BLH**, 10am-12noon. www.bourton.u3asite.uk See page 13.
- 28th Parish Council meeting, 7pm, **GMCC**.
- 29th Police Point, **GMCC**, 10-11am, PCSO John Allen,
- 29th Book Club Bourton Book Club

meeting, 7pm. The Old New Inn. dpayne056@hotmail.co.uk

30th Fish & Chip Supper & Quiz, Jubilee Lodge, booking essential, 01451 823100 to reserve your place.

31st-1st June, Gift Fair, **VH**, 10am-5pm. All welcome.

Regular Weekly Bourton Events

Mon. "Old Sweats" Meeting, **BLH**, 10am—12 Noon, 07714 852364 bourton.secretary@rbl.community

Mon, Wed & Fri, Bourton Men in Sheds, 9.30am-12.30pm, Behind **RBL**, Keith 01451 831886.

Mon. & Thurs. Stay Strong & Steady, **BLH**, 1-2.30pm. 07957 546067 cotswoldactivehealth@gmail.com See advert on page 5.

Mon. & Fri. Cotswold Yoga, **VH**, Mon 10-11am, Fri 5-6pm, 07490858775.

Tue. Drop in Digital Help Group, **GMCC**, 10.30am-12.30pm. 07707 281803.

Tues. "Together on Tuesdays", soup lunch, **StLC**, 12-2pm.

Thurs. Flexercise, **BLH**, 10-11am. 01993 882350 kathy.kirk@live.com

Bourton Library

The George Moore Community Centre,
Moore Road, Bourton-on-the-Water,
GL54 2AZ. 01451 820964

Opening Hours

Tues 10am-1pm, Wed 2-5pm, Fri
10am-1pm & 2-5pm, Sat 10am-1pm.
Friendly staff & volunteers.

Internet access,

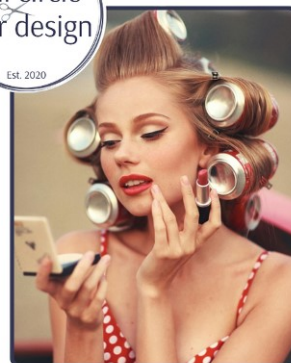
Advert Printing & Photocopying.

www.gloucestershire.gov.uk/libraries

Emily Sutton-Redford 07823 429150

full circle
hair design

Est. 2020



Bookings by appointment only

Leigh: 07826 014-595

Unit 4, Old Station Yard Business
Centre Bourton on the water GL54 2RZ
fullcirclehairdesign.co.uk

KENDALL & DAVIES SOLICITORS

For a wide range of legal services including:

Residential and Commercial Property Transactions
Company and Commercial Advice
Wills, Trusts and Probate
Inheritance Tax Planning
Lasting Powers of Attorney
Litigation
Debt Collection
Matrimonial and Family Matters

STATION ROAD, BOURTON ON THE WATER, GL54 2AA
Tel: 01451 820277
Email: bourton@kendallanddaves.co.uk
www.kendallanddaves.co.uk

Offices also at: Stow on the Wold, Burford and Moreton in Marsh



W. J. Wright

Funeral Directors & Bereavement Care

Bourton-on-the-Water
Telephone: 01451 810700
info@wjwrightfunerals.co.uk

Personal Caring 24 Hour Service
Family Owned Funeral Home
Serving our Community
Private Chapel of Rest

Funeral Directors

Rachael Pickard
Natasha Flynn ~ Julie Smith

Bourton Browser Team News

Articles: We welcome articles, letters, poems, etc (**maximum 300 words**) & photographs, from adults, children and local community groups on any subjects of local interest.

Bourton On-line Village Diary: To see what's going on in Bourton for this, and future months, use the QR code or go to our website below. If you are planning a **Bourton based** event, email the details to: team@bourtonbrowser.co.uk We will add them to the on-line village diary and include them in the "Diary Dates" column in the relevant month's Browser. Events welcome for dates throughout 2025. The on-line diary is a useful tool that can prevent major events clashing, so check it before scheduling your event! Remember we can only put events in if you tell us about them!



team@bourtonbrowser.co.uk

www.bourtonbrowser.co.uk

The Bourton Browser Team

This year's Greystones 10k Trail

Run is on 22nd June 2025

We want as many runners as possible who we've seen before, along with loads of new entrants to join us on Sunday 22nd June to enjoy this very popular annual 10k. It promises to be a great day, held at Greystones Farm, Bourton-on-the-Water. The Run, which starts at 10.30am, is well marshalled and each runner will be chip tag timed by LuSH Race Timing.



The course goes through the beautiful Cotswold countryside and is a mixture of trails, paths and some roads. We're very pleased to see that some clubs have included it in their yearly programme so it must be pretty good.

This Run is a mixture of people enjoying themselves while also trying to improve on their previous years' times. An added incentive are the prizes for the first 3 men and for the first 3 women.

The cost of entry is £13 to the end of April, then £15 to the closing date of online entries. It's £17 on the day.

The money raised will be shared between the charities that North Cotswolds Rotary supports and Greystones Farm, to help support the upkeep of the Iron Age ramparts and roundhouse along with an interactive Discovery Barn.

The Farm is holding an Open Day at the same time as the Run so there will also be many interesting things to see and do.

To enter the Run go to www.entrycentral.com/Greystones10KTrailRun

Youth Competition National Success

We are excited that our winner in the Young Writer competition, Juliana Mavaire from Bourton Primary School, has succeeded at the next level and her poem on the theme of Wonderful Water has been entered into the National competition. We wish Juliana the best of luck and encourage her to continue to use her talent for writing and poetry. Young Writer, Juliana Mavaire (left) in photo.

John Barber



Bourton Panto Group



Bourton Panto Group

Last month we had a rather civilized get together at L'Anatra in the village, mostly to pat ourselves on the back for surviving the production of "Aladdin and Abanazer" (it was touch and go there for a while!). Delicious

food and good company definitely helped us recover. Unfortunately, some familiar faces couldn't make it, probably still recovering from last year's stage fright!

But fear not folks, because we're already plotting our next theatrical extravaganza. We've been locked in a room with more scripts than sense, and we're dangerously close to unleashing an even bigger and (dare I say it) better show upon the unsuspecting audiences of The Victoria Hall! To fuel this madness (and pay the electricity bill), we've got some fabulous fundraisers coming your way – more details soon on our website, Facebook and Instagram - Bourton Panto Group - so keep your eyes peeled.

Fancy joining our band of friendly (some would say slightly mad) performers or backstage wizards? If you've got a secret desire to wear crazy costumes or lend a hand in creating props, get in touch via email - bourtonpantogroup@outlook.com - or contact us through our website or social media platforms (see above).

We have many new things coming your way and it would only be right to kick these off with our brand-new logo, a sneak peak of all the exiting things to come. **Emily Franks**

Cotswold Merrymouth Inn

13th Century Inn — Quality Food & Drink at Sensible prices

Sunday Carvery

Open every Sunday Noon until 4.30pm

Kids £10 Standard £19 Large £22

All locally farmed meats and fresh steamed fresh vegetables

30th March - Mother's Day Carvery

BOOK NOW

Vegetarian, GF & other options available

Ample parking Family & Dog friendly

Events for 2025

Live Music

20th Mar - David Sinclair Four (Blues)

4th April - Stone Soup (Rock/Metal)

10th Apr - Nigel Bagge Band (B/RnB)

15th May - Teed Up (Blues)

March open: Wed to Sun from Noon

Check website for details

Scan QR for Events



www.cotswoldmerrymouth.co.uk - 01993 256620

cotswoldmerrymouthltd@gmail.com - OX7 6HR

THE OLD NEW INN

New Seasonal Menu!

We've launched our new Spring/Summer menu that celebrates all things seasonal when it comes to food!

We source local produce as much as possible to provide the highest quality when it comes to our food. You can view our new menus and book a table to dine with us via the QR codes below.

Plus, come and enjoy our HUGE beer garden this season! Away from the busy streets, savour a quiet sunny spot where you can have delicious food and drinks surrounded by our wonderfully kept garden.



Book A Table

View Menus



T: 01451 820467
E: enquiries@theoldnewinn.co.uk

OUT AND ABOUT in May

- Mondays - Yoga for All, 9.30-10.30am, Pilates 10.35-11.30am, Wyck Rissington Village Hall. 07950 424037 Enquiries: franyoga@rocketmail.com
- Until 5th The Big Batsford Bunny Hunt! £3 per child plus normal admission fees. Booking recommended. Batsford Arboretum, Nr Moreton-in-Marsh, GL56 9AT. 01386 701441. www.batsarb.co.uk.
- 3rd-5th Lechlade Annual Vintage Rally & Country Show, Langley lane, Bampton, OX18 2RZ. From 10am. Vehicles, Dog Show, bands, trade stands, car boot, fun fair, crafts, refreshments, raffle, majorettes, tombola, beer tent etc www.lechladecollectorsclub.co.uk See page 19.
- 6th-31st, Dogs welcome in formal gardens, walled gardens and courtyard, Blenheim Palace, Woodstock, OX20 1UL. www.blenheimpalace.com or call 01993 810530
- 7th Hike for Home-Start Cotswolds, 2-hour circular walk, start Fosse Cross GL54 4BZ. £15 with refreshments, £30 with 2-course lunch. Tickets in advance only from www.home-start-cotswolds.org.uk Dogs on leads welcome, free parking. See poster page 17.
- 8th-11th Malvern Spring festival, Three Counties Showground, Malvern, tickets from 03443385400 or www.threecounties.co.uk/buy-tickets/
- 9th-19th Giffords Circus, Sudeley Castle, Winchcombe, GL54 5LP. www.sudeleycastle.co.uk/events/giffords-circus-3 01242 604 244. www.sudeleycastle.co.uk
- 10th The Village Market, Great Rissington Club, 10am-noon. Look forward to seeing you. Jackie Palmer, 01451 822285.
- 11th Sherborne 5 Miler & Fun Run, in aid of Sherborne School, details & entries www.sherborneschool.co.uk See poster page 9.
- 11th VE Day Celebrations, Sherborne Village hall, 2-5pm, afternoon tea £8, children £5. Fancy dress competition for adults & children, crafts, music of era, bar. Proceeds to Help the Heroes. See poster page 17.
- 12th-24th Chipping Campden International Music Festival, GL55 6JG, <https://www.campdenmayfestivals.co.uk/>
- 15th Teed Up, British Blues at its best. Merrymouth Inn, Stow Rd, Fifield, OX7 6HR. 01993256620.
- 16th Rissingtons Local History Society, 7.30pm, The Human Costs of the British Civil Wars, by Professor Andy Hopper. Village Hall, Upper Rissington, GL54 2QW. Visitors welcome £3.50. information.RLHS@gmail.com. 07815 606770
- 17th-18th Cirencester Food & Lifestyle Festival, Market place, GL7 2PP. 10am-6pm Sat, 10am-4pm Sun.
- 18th Classic Cars at Combe Mill, Blenheim Palace Sawmills, Combe, OX29 8ET. Tea room. Dogs welcome. Adults £9, Seniors £7.50 Children FREE. combemill.org See page 14.
- 24th Northleach Church, 7.30pm. The Pinewood Saxophone Quartet, Tickets £15 / £20 at www.northleachevents.co.uk
- 24th-26th Festival of Steam, Gloucestershire & Warwickshire Steam Railway, Winchcombe Station. Cheaper tickets available in advance. 01242 621405. www.gwsr.com
- 25th-26th Open Garden & Plant Sale, Pasture Farm, Upper Oddington, GL56 OXG, 11am-5pm, entry £6, in aid of National Garden Scheme, proceeds from plants and refreshments to Kate's Home Nursing. See poster page 14.
- 31st Moreton in Marsh Bowling Club Open Morning, from 10am. All ages welcome. See page 14. Details from www.moretoninmarshbowlsclub.co.uk



FOR SALE / WANTED ITEMS



To advertise items such as Household items, Toys, Garden Equipment etc, complete the contact form on the "Get in Touch" tab. The advert should be no more than 15 words. It must be received **before 12 noon on the 15th of the month**. No commercial adverts accepted for this section.

FREE Morphy Richards Slow Cooker. 01451 810415

For Sale

Sharp Sound Bar HT-SB250 (BK), for TV, with remote & manual, 34" long. V.G.C. £45 ONO. 01451 822431

For Sale

3 x 255/50 R18, 12 months wear on each. £10 each. Reason for sale: new car with different sized wheels. sue.hewitt18@outlook.com

For Sale

1 x T125/80 R18 brand new space saver wheel & tyre - unused. £160. new. Happy to accept realistic offers. sue.hewitt18@outlook.com

For Sale

Two Dawes bicycles, both with helmets, pumps, rear carriers, locks etc. £120 each OVNO, rye.close@hotmail.co.uk 01451 820917

For Sale

Hill Billy Electric Golf Trolley, Good Battery & charger. £40 01451 810415

For Sale

Golf Bags, choice of 4. £10 each. 01451 810415

FREE

Two Hard Shell Suitcases, heavy (loft storage?). 01451 810415

For Sale

Golf Trolley CUBE 3 wheel, used twice. £95. 01451 810415

Batsford
ARBORETUM & GARDEN CENTRE

Stroll through the flower-filled arboretum,
browse our garden centre
and enjoy delicious food from our café.
A perfect day out for all!



www.batsarb.co.uk

Batsford Arboretum & Garden Centre, near Moreton-in-Marsh. Open daily.

IN PAIN???

TRY "THE BACK WOMAN" AT BOURTON!

- McTimoney Practitioner est. 1999
- Dry Needling / Low Level Laser
- Also Equine / Canine McTimoney
- Registered with The Association for McTimoney Practitioners



Tina Hamer, mp, mamp

Gentle and effective treatment for a variety of conditions

37 Roman Way, Bourton-on-the-Water, GL54 2EW

Tel: 01451 542016 / 07884 312559

Email: tina.hamer@sky.com www.bourtonmctimoney.co.uk

Bourton Roadrunners

After weeks or tireless preparation, second-claim member Kevin Goodwill was certainly ready for this year's **Newport Marathon**. One of the difficulties faced by marathon runners is setting off too fast or running inconsistent splits. Kevin clearly took this into account and was rewarded with a time of three hours, nine minutes and 24 seconds, inside his target of 3:10 and earning a new PB. His father Tony, a veteran of the marathon, opted for the **Newport 10k**, which he completed in a respectable time of 56 minutes and 7 seconds; with plenty of time to see son Kevin finish.



Newport 10k & Marathon – Tony & Kevin Goodwill



Boston (Lincs) Marathon – Maxine Emes

Whilst Bourton's Maxine Emes is no stranger to long-distance swimming, this weekend she took on her first full marathon at the **Boston Marathon**, Lincolnshire, where she achieved a brilliant time of three hours, 38 minutes and 52 seconds.

On the same day Jaq Underwood took part in this year's **Bigmoose 10K**; an event held at Cardiff's Bute Park in support of

a mental health charity. Jaq joined a field of 1600 runners, achieving a very respectable time of 45 minutes and 6 seconds. In addition to the 10k race, there were four other distances offered with a total of nearly 4000 participants.

While a large contingent of club members of all abilities were away for a training weekend at Bridgend, several other members were out in support of **parkrun** as usual, including the following venues:

Ayr, Near Glasgow: Danny Hannig - 19:24 (1st overall).

Danehy Park, Massachusetts, USA: Susan Hunt - 27:02 (VW60/2 and 3rd female overall).

Evesham: Ian Tolfts - 23:51, Megan Ratcliffe - 25:07 (VW55/1), Louise Hamilton-Smith - 25:17 (VW45/1 and course PB), John Harding - 25:24 (VM65/2 and course PB), Liz Hulcup - 26:21 (VW70/1), Alex Wilson - 27:45, Jenny Evanson - 35:00.

King George V Playing Field, Cheltenham: Chris Dry - 27:36 (VM60/1).

Porthcawl, South Wales: Allie Quinn - 30:25, Claire Louise Carroll - 54:13.

Louise, Gillian and John

STAY STRONG AND STEADY

A class that focuses on strength and stability and maintaining independence. All abilities welcome.



COTSWOLD ACTIVE HEALTH

exercise your way to a better health

British Legion Hall, Bourton-on-the-Water
Mondays 1-2.30, Thursdays 1-2.30

£10 per class (tea, coffee, biscuits and social included)

Cally : 07957 546 067 cotswoldactivehealth@gmail.com

Experienced & qualified level 4 instructor



laterLife training
QUALIFIED

Bourton Vale Horticultural Society

Your Friendly Gardening Club

Do you have a garden, large or small, a courtyard or just a large flower pot?

Are you experienced or new to gardening?

Or is your patch fresh from the builders?

Our aim is to promote gardening at all levels. To help, encourage and learn, and enjoy ourselves doing this.

Our programme for 2025 includes talks on:

- A taste of Chilli
- The wonder of wild flowers
- Villa gardens on the Italian lakes
- Ponds and water features



All given by experts in their fields, plus competitions, refreshments and a raffle.

Our monthly meetings are at 7.30pm on 2nd Wednesday of the month in the Baptist Church Hall, Station Rd, Bourton-on-the-Water.

Membership is just £15 a year (which gives discounts at Burford and Batsford Garden Centres) or £3 per visit.

Come along and see for yourself and bring this article to get a free sample evening.

Contact Sheila Thorpe on 07973 391741 for more information

Bourton Vale Horticultural Society

Your Friendly Gardening Club

Well spring has finally sprung - daffodils everywhere and primroses have been beautiful this year— after all that lovely sunshine, we're now desperate for some rain. Us gardeners are never happy!

The April meeting was our plant and seed swap (and anything else related to gardening from magazines to tools). A great variety of plants were brought and shared with everyone going home with something new.

The competition for a small display of flowering bulbs was won by me! So I had first choice from the raffle prizes.

Our next meeting is on Wednesday 14th May, starting as usual at 7.30pm in the Baptist Church Hall in Bourton-on-the-Water, when our speaker will be Mary Fenton talking about "A taste of Chilli". The competition will be a vase of Iris and or tulips.

Happy Gardening.

Sheila Thorpe

07973 391741

Sheila@bobbelfarm.co.uk



Bourton-on-the-Water WI



On Saturday several members of Bourton-on-the-Water WI attended the Annual Council Meeting.

Following the business of the day two speakers, Jeryl Stone, NFFWI Chair, and Sue Webb, Gloucestershire Archivist, entertained us before the lunch break.

After lunch we had a very interesting talk by Hayley Scott about the Real CSI. Hayley was a CSI for 14 years with the Met. and she had many anecdotes, some amusing and some blood spattered!

On a lighter note, on Tuesday evening at the meeting in Victoria Hall, Myra showed us how to decorate eggs for Easter using dyes made from roots, berries and bark.



The decorations, when done by an expert, have different meanings. Who knows what these eggs mean!

Our next meeting will be Race Night. We meet every second Tuesday at The Victoria Hall at 7pm.

New members are most welcome. For more details please contact Victoria Jackson (President) on 075496 40492

June Renshaw

Irene's Charity Knitting Circle

We meet on the second Wednesday of each month from 10.00am until 12.00pm at Willoughby Place, Station Road, Bourton-on the-Water, (opposite the Co-op Filling Station).

Why not join us or just pop in with your knitting? Enjoy coffee/tea with biscuits. Everything we receive will be donated to worthy causes.

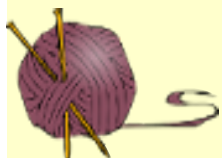
Please note, there is no parking available at Willoughby Place, however we are happy to collect anyone who needs a lift within Bourton. Just give us a call.

For further details, call either:

Irene or Peter on:

01451 824175

or 07764 699594



Bourton-on-the-Water Probus Club



On 24th March, local member, Russ Girdler, gave us an entertaining and amusing talk on his life. He was born in Bow (as were two of my children) and in the war moved to Ilford in the London Borough of Redbridge (where I lived for 40 years) and explained why this borough received more V2's than anywhere else in London. He also talked about his years in Austria, almost adjacent to the Musikverein and also in Germany.

On 14th April, in the unexpected absence of our speaker, our secretary Kevin Hick gave us a resume of his early life. He started in the railways when leaving school, as his father was a Director there, but initially became interested in surveying. He passed surveyor exams, but after a while became more interested in printing, and subsequently became very involved with various companies in early work in the emerging computer printing market. It was all very interesting and we look forward to hearing more about his life on a future occasion.

If you are interested in joining us, do come to one of our meetings, advertised on the Diary page. There is no commitment to join until you have attended 2 meetings and seen if you like us! Alternatively, contact our secretary Kevin Hick, on 01451 860435.

Roger Harris

DEMENTIA FRIENDLY CAFE

We are taking part in the national ALZHEIMER'S ACTION WEEK in May with the following events:

- Cafe as usual on the 2nd and 4th Fridays (9th & 23rd) at St Lawrence's church. On the 9th May, for VE Day, we have a Fire Service talk. On 23rd May we will have our "Memory Boxes". We had lots of fun last time we used these!
- 21st May, information session at Stow Library
- 21st May, Cotswold Radio, 5pm questions and answers
- 29th May, information session at Bourton CO-OP
- Forward notice, on 3rd June we will have a VISIT TO BIRDLAND with our members.

As always, do join us if you want support and fellowship. Hayley Johnson, from the Alzheimer's society, came to the last session and usefully talked to a number of carers and she will be coming again to a future meeting. Hope you had a Happy Easter!

Bill Wragge



**Domestic and commercial
Routine pest control plans**

**Rodents
Wasps
Garden pests**

**Contact
07712539913
joe@bennettpestcontrol.com**



NEW PHARMACY IN UPPER RISSINGTON!



Badham Pharmacy
Unit 2, The Village Square
Upper Rissington
GL54 2FL

TEL: 01451 828226

A new community pharmacy open six days a week

Monday - Friday 9am - 6pm

Saturday 9am - 12:30pm

**ASK ABOUT
FREE DELIVERY**



Badham Pharmacy
11 The Square
Stow on the Wold
GL54 1BQ

TEL: 01451 830623

Stow Pharmacy, also open six days a week

Monday - Friday 9am - 6pm

Saturday 9am - 5pm

**ASK ABOUT
MINOR AILMENTS**

www.badhampharmacy.co.uk

STONES
**Traditional
handcarved
sandblasted
memorials**

**carving commissions
undertaken**

Peter Shaw BA HONS, DIP.LA

Mobile 07974 577924

Workshop Tel/Fax 01451 821414

Tel 01451 821671

Email petershaw1951@btconnect.com

www.stonesmemorials.co.uk

Bourton on the Water

Message from the Church

In April, the church celebrated the resurrection of Jesus from the dead. In our service we celebrated with a baptism. Baptism symbolises our burial with Christ, and our newness of life with His resurrection. It does not cleanse us from our sins. It is an outward symbol of inward cleansing by the blood of Jesus Christ.

This month the church will celebrate Pentecost. On the day of Pentecost, three thousand believed in the Lord Jesus Christ, repented of their sins, and were obedient to follow Jesus in the waters of baptism. They repented because the Holy Spirit came and touched and changed lives.

I often hear people say that they are not good enough to attend church. I often hear people say that they are good people and do good things. Christian teachings suggest that humans have not met divine standards but can find reconciliation through Jesus' sacrifice and receiving the

Holy Spirit. In the book of Acts, people asked, "How can we be saved?" The apostle Paul answers: "Repent and be baptised every one of you, in the name of Jesus Christ, for the forgiveness of your sins. And you will receive the gift of the Holy Spirit."

God's invitation is to everyone. He extends his hand and says, "Come to me."

I accepted his invitation at an extremely low point in my life and have never regretted it.

When I say I am a Christian, I am simply saying I once was lost, but now I'm found and forgiven. I acknowledge my limitations and seek His strength to persevere. I am admitting I have failed and need God to clean my mess.

Sins forgiven and washed away. Filled with His Holy Spirit. Reconciled back to God.

All gifts from God for everyone who will receive.

Rev. Sue Woodley

admin@bourtonparishchurch.co.uk

www.bourtonparishchurch.co.uk



All are welcome every Sunday at 11am

Barn Dance in aid of Christian Aid - 3rd May 4.30pm-6.30pm - Suitable for all ages

Special Service for Ascension Day at Upper Farm, Clapton 7pm on Thurs. 29th May

Regular Services: Holy Communion on Wednesdays @ 10.00am followed by coffee & chat

6pm - Holy Communion with hymns - 4th May

8am - Book of Common Prayer Holy Communion - 11th & 25th

Breakfast Church - Saturday - 9am start - everyone welcome

Together on Tuesdays - Lunch Club 12-2pm every week - all welcome

TOAST - for primary children and carers at 3.15pm on Tuesdays in term time

BumbleBeez (parent and child group) every Thursday 9-11am

St James, Clapton @ 9.30am 4th May - Morning Worship

18th BCP Holy Communion



The Water Church/Bourton Baptist Church

Minister: Rev Sue Woodley

Manse: 01451 820055

Mobile: 07828 781246

Church Office: 01451 824225

E-mail: minister@bourtonbaptist.co.uk

Sunday Morning Service 10.30am All Welcome

Wavemakers Children's Ministry

Communion Sunday 18th May 10.30 am

Cafe' Tots Every Wednesday from 9.15 - 11.30 am

Lots of lovely toys, craft and refreshments. All Welcome

Open4U Open every Thursday from 10.00 am until 4.00 pm in the Church Hall.

A light lunch is served at 12.30 pm and refreshments are available through the day.

Everyone is welcome.

See our website for this month's diary and more details of all our activities

<http://www.bourtonbaptist.co.uk>

Roman Catholic Parish of Our Lady & St. Kenelm, Stow on the Wold

stow-bourtoncatholic.net

Fr. Stephen Lambert 07836 384932

Email:

stephen.lambert@cliftondiocese.com

Weekend Masses: Sat. evening: **Vigil Mass 6 pm.** Sun. morning: **9 am Sung Mass.**

Weekday Masses: At 9 am every day (No Mass Sat. mornings). Mass on Tues. takes place at St. Lawrence's at 9 am.

The priest welcomes all enquiries about the Christian faith, Baptisms, Confirmations, Weddings, Funerals, the Sacrament of Reconciliation, Blessing of houses, etc.

There will be a Pilgrimage from Stow to St. Kenelm's Well, Winchcombe on Saturday May 17th.

Special Masses: Thur. 29th May: Ascension Day. Solemn Mass 6 pm (No morning Mass). Sunday 8th June: Pentecost Sunday. Solemn Mass 9 am;

Young children: Every Sunday there is a special facility for young children from 3 years old upwards at all Sunday 9 am Masses. During the first part of the Mass they have some simple teaching about the Gospel of the day and then they create or paint something to show the congregation what they have learnt.

Fr. Stephen



PLEASE RECYCLE YOUR INK- JET CARTRIDGES

St Lawrence's Church now has a collecting box for you to recycle your Canon, Epson & HP ink cartridges and other company (e.g. Tesco) equivalents.

All proceeds for church funds

QUAKERS

The Religious Society of Friends

Every Sunday 11am

at The Friends Meeting House,

Pytt Lane, Burford

Enquiries welcome Myra Ford

01451 810484.

To request a free info pack,
email: outreach@quaker.org.uk

For The Younger Generations



THE COTSWOLD SCHOOL

I hope that you had a wonderful Easter break and are looking forward to the sunny months ahead! Our pre-Easter schedule was busy as ever with activities and events across the whole school, from our Easter Concert at St Lawrence Church to the fantastic Easter Market Day put on by our Careers and Futures Pupil Leadership Group, and not to mention our PTA Bingo Night which raised over £2000 for the school and Kate's Home Nursing.

The Cotswold School is Outstanding

The Cotswold School is delighted to share that following our first full Ofsted inspection in ten years, we have maintained our level of education as Outstanding, an achievement the school is proud to have upheld since 2006.

The glowing report highlights the high quality of teaching and learning at The Cotswold School with our super curriculum which is "highly ambitious for all pupils", as well as our "exceptional" careers programme, with Ofsted noting that "pupils and students in the sixth form leave for their future destinations with excellent qualifications and a wealth of experiences that have developed their individual characters".

The report is a testament to the team effort that lies at the heart of The Cotswold School. The staff at The Cotswold School are truly exceptional—their dedication and hard work, year after year, have led us to this outcome. The report not only recognises our academic strengths but also celebrates the incredible pastoral care that defines our school community. I am truly filled with pride and gratitude for each and every pupil, parent, staff member and governor that makes our school the success that it is every day.

The full report is available to view on the school's website.

Will Morgan

Headteacher

www.cotswold.gloucs.sch.uk/latest-news/



Try Tennis for Free

Our Open Day – Sunday 11 May!

Fancy giving tennis a go? Or looking to get the kids more active? Come along to Bourton Vale Tennis Club's Open Day on Sunday 11 May from 2pm as part of the LTA Big Tennis Weekends and enjoy an afternoon of free tennis fun for all ages!

Whether you're a complete beginner or a regular player, this is the perfect chance to check out our lovely club, have a go on court, and meet some of our friendly members. Club coaches Kingsley Harris and Clare Bell will be running activities and games for the kids, and adult members will be on hand to hit with grown-ups too.

No equipment? No problem! We'll provide rackets and balls – all you need to bring is a pair of trainers and your best smile. There'll also be light refreshments to keep your energy up. Just turn up by 2pm – no need to book in advance.

Team News

The Gloucestershire Winter League has wrapped up, with Bourton entering one mixed team who finished 5th in Division 2. In the Over 60s Ladies League, our A team came 3rd in Division 4 and the B team took a strong 2nd place in Division 5 – well played all round! The Summer League is now underway, with two ladies' and two men's teams competing. Best of luck to everyone playing!

So, pop Sunday 11 May in your diary and come see what Bourton Vale Tennis Club is all about.

We'd love to see you on court!

Alex Peyton



Local Groups and Organisations for the YOUNGER GENERATION

Beavers	Stephanie Lewis	07308 144397
	1stbourtonbeavers@gmail.com	
Bourton Gymnastics	Tom Eden	01451 870778
	Bourtongymnastics.co.uk	
Bourton Primary School		820458
Bourton Road Runners Juniors	Chris Hartley/Richard Buffton	0772 0509894
	brjuniors@gmail.com	
Bourton Rovers Youth (U10 Upwards) -	Catherine Williams	07889 694545
Bourton Rovers Youth (U9 & below) -	Amy Wright	07876 458571
Bourton Vale Cricket Club	Lucy Gillespie	07949 227128
	craiglucygillespie@yahoo.com	
B'n Vale Equestrian Centre	Leanne Launchbury	821101
Bourton Vale Tennis Club	Kingsley Harris	07879 644218
	www.bourtontenniscub.org	
Bumblebeez babies & pre-school tots	Pat Taylor	07518 457652

Cafe Tots	Sue Woodley	07828 781246
Children's Jujitsu	Andy or Hayley	07951 587398
Cubs	Nick Hawke	07788 406728
	1stbourtoncubs@gmail.com	
Hockey	Rhys Davies	07817 108970
Little Hurricanes (Babies & Toddlers)	littlehurricanes@hotmail.com	
Pre-School	Lisa Sorley	07950 048066
Scouts	Phil	1stbourtonscouts@gmail.com
Squirrels	Emily	1stbourtonsquirrels@gmail.com
4Shires Swimming	Jo Shaw	membership@4ssc.uk
Taekwon-do	Lee Chapman	01285 640500
The Cotswold School		820554
Youth Club	Lynda Hicks	07867 121122
Youth Theatre	Sarah Dowie	sarah@cotswoldyouththeatre.co.uk

Bourton Rovers Youth **A Season to Remember!**

As the final whistle blows on the 2024/25 season, Bourton Rovers youth coaches and committee volunteers are already gearing up for the next! With teams competing across the Cheltenham, Witney, and Severn Valley leagues, our dedicated volunteers are hard at work registering players, securing sponsorships, and preparing kits and equipment. The off-season is bustling! With summer tournaments, new age groups being created and pre season friendlies already in the midst, the club really puts in a huge effort ensuring our young players are ready for the challenges of the new season ahead.

I would like to say huge congratulations to our U10s team for winning their Plate Final back in March—a real testament to their hard work and amazing team spirit – Well done team! Although we are busy working on the

new season already, we are also excited to fully support our U11 Blues as they head off to compete once again in the Cup Final at Cheltenham Town's stadium on May 4th. These achievements are so significant for our small village club, and we, as a club, are extremely proud of them. If you are free on the 4th May, we would love the community to come out and cheer our U11's on! Off the pitch, our Easter Sunday event was a fantastic success, featuring a free Easter Egg Hunt, football activities, and crafts. These gatherings really highlight the community spirit that defines Bourton Rovers.

As summer approaches, we look forward to sunny days filled with laughter, football, and fun here at Bourton Rovers. Stay tuned for upcoming events at the clubhouse—there's plenty more in store!

Bring on the Sunshine!
Catherine Williams



Sherborne
5 Mile & FUN Run
In association with National Trust **Run LuSH**
race timing co.uk

Sunday 11th May 2025

Fun run starts 10am and 5-miler starts 11am

Medals for all runners - prizes for category winners
Refreshments * bbq * free parking

Races start at Sherborne C of E Primary School GL54 3DH

CCC
Cotswold Custom Clothing

tavistock
PROTECT

FAR PEAK
NCTROO
NORTH COTSWOLD THE & RUN
IMAGINE. BELIEVE. ACHIEVE.

Sturt's Larder

freedom
shop & cafe

BURFORD
GARDEN LTD

MG
Systems

Gardall Hardware
Preschool & Daycare

Hacklings
STORAGE & DISTRIBUTION

bea

Cotswold Wildlife
Park & Gardens

Kakoro

COTSWOLD
WELLNESS

PEAK FITNESS
& Lifestyle

THE PHYSIOCLINIC

All funds raised go to the school FOSS registered charity number: 1075256
Check out Sherborne Run Facebook and Instagram for updates
Entries via Race Nation or www.sherborneschool.co.uk



BAYDEN
SETTING THE BAR



PLUMBING AND HEATING
Locally based company for all your plumbing needs

General Plumbing and Installations
Installation or Replacement Oil or Gas Boilers
Central Heating Power Flushing Specialists
Installation or Replacement Unvented Cylinders

Quick & Efficient Service

0 7 5 7 0 1 3 6 8 0 1
info@bayden.co.uk

©Bayden Limited 2022

Zena the Barber and Hairstylist.



Cosy little salon based at the George Moore
Community Centre. Bookings available online.
www.zenathebarber.com

Bourton Primary Academy

It probably already seems like a distant memory, but we hope you all had a wonderful Easter. The end of the Spring term came around quickly and we welcomed our parents in for an open afternoon at the end of term. The Summer Term has got a lot to live up to. As some of you might remember reading earlier in the year, some of our children took part in some competitions organised by The Rotary Club. The school winners for the art and writing competition were Nancy in Year 4 for art and Julianna in Year 6 for writing. Both of these children then went through to the area finals. Nancy came 2nd and Julianna won the area final, so her poem has now been put forward to the National finals. We are very proud of both of these children and are hoping lots more children take part in the next round of competitions!

At the beginning of May our Year 4 children are going to Grittleton House for a 3-day residential visit. We are sure they will all enjoy the campfires, high rope challenges, team building activities and a few other surprises while they are there.

We are looking forward to marking the 80th anniversary of VE day with a day of activities to remember the importance of it as well as a shared lunch including the recommended fish and chips!

Lastly we would like to say a big Well Done to Nelle in Year 1 and Scarlett in Year 2 for helping to organise a non-uniform day for Diabetes UK. They helped raise an incredible £672 from the generosity of their school friends and family and recently received a certificate of thanks.

Tori Gainford

Deputy Headteacher

VJ COLLETT

BOURTON ON THE WATER

ALL MAKES
SERVICING AND REPAIRS

AIR CONDITIONING

DIGITAL FOUR WHEEL
ALIGNMENT

TYRES, EXHAUSTS AND
BATTERIES

MOT

DIAGNOSTICS

01451 820366

WWW.VJCOLLETT.CO.UK



St Lawrence
Bourton-on-the-Water



Come and join us for a

Barn Dance

@ St Lawrence Church
Saturday 3rd May
from 4.30 to 6.30pm



Suitable for families & all ages

*Come along and join the fun
with dancing & refreshments*

**Free entry with donations to Christian Aid, a
partnership of people, churches and organisations
committed to ending poverty worldwide.**



G&O ENGINEERS

1 Cotswolds Business Park,
Range Road, Witney,
Oxfordshire, OX29 0YB.

**Oxfordshire based company bringing great
local services to your door...**

- Boiler service and repair.
- Gas, Lpg, Oil and Electric.
- Heat pumps, boilers, Agas and Rayburns.
- Plumbing and heating services.
- Repairs and installations.
- Building renovations and maintenance.
- New builds, extensions and repairs.
- Electrical services.
- Repairs and installations.
- Solar panels and batteries.

01993 771754

info@gandoengineers.co.uk | www.gandoengineers.co.uk



Riverside

DENTAL PRACTICE

Book an appointment:

01451 820 306

admin@riversidedentalbotw.co.uk

Our Services Include:

- Routine Check-ups
- Hygiene Appointments
- Teeth Whitening
- Fillings, Crowns & Bridges
- Dentures & Tooth Extractions
- Invisalign

Located in the heart of your community, Riverside Dental Practice offers trusted, high-quality dental care for the whole family.

riverside-dental-practice.co.uk



COTSWOLD GLAZING

Modern & Traditional Windows & Doors
Glass & leaded light repairs
We replace misted units, hinges, locks & handles
Energy rated double glazed units

Office: 01451 832 337
Mobile: 07973 954 171
m.kneville@tiscali.co.uk

Become a School Governor at Sherborne C of E Primary School

Are you passionate about education and community engagement? Do you have skills and experiences that could positively impact the future of the school?

We are looking for Governors to join the Local Governing Body and help shape the strategic direction of the school. This is a fantastic opportunity to make a meaningful difference while developing new skills and experiences

About Our School

Sherborne C of E Primary is a small, friendly, and vibrant school at the heart of its village community. The mission is simple: to inspire a love of learning, foster curiosity and independence, and create unforgettable educational experiences that prepare our children for the future.

As part of the Corinium Education Trust, Sherborne C of E Primary School has its own Local Governing Body, which plays a vital role in supporting and challenging the school leadership to ensure the best outcomes for all pupils.



What Does a School Governor Do?

As a Governor, you will contribute to the strategic leadership of the school by:

- Working with fellow Governors to plan the strategic direction.
- Supporting and constructively challenging the Headteacher.
- Challenging existing processes to drive school improvement

Why Join Us?

Becoming a school governor offers:

- A chance to make a real impact on young people's lives
- Professional development and leadership experience

How to Apply

If you are interested in learning more, please contact

Kathy Jackson, CET Governance Officer, at clerk@coriniumeducationtrust.net for further details and an application form

Chiquita Henson

CEO (Trust Lead) of the CET

Mark Lees

Chair of CET Trust Board

Cotswold Youth Theatre

As we wrap up the spring term, we couldn't be prouder of the incredible work our talented actors have put in. Their dedication and creativity have truly shone through! Looking ahead, we're full steam into preparations for next term's exciting productions, including Charlie and the Chocolate Factory, James and the Giant Peach, Macbeth: A Game of Power and Glory, and After Juliet. It's going to be an unforgettable season of theatre!

Our HomeEd groups have also been busy with some fantastic projects. The younger groups have dived into magical worlds filled with Wizards, Dragons, Pirates, and Mermaids, exploring a wide range of imaginative themes. Meanwhile, our older group has been hard at work developing their very own devised production.

We can't wait to see all the amazing performances next term! There are still spaces available for our Arts Award Summer Camp, running from 12–15 & 18–21 August at The Victoria Hall, Bourton-on-the-Water. Open to children aged 7–11, it promises to be a fun and creative week. For more details, email jen@cotswoldyouththeatre.com

Sarah Dowie



COTSWOLD YOUTH THEATRE
TRINITY COLLEGE ARTS AWARD

SUMMER CAMP

"Reimagining Reality Through Art"

WHETHER YOU'RE NEW TO THE ARTS OR AN ARTS EXPERT, JOIN US FOR TWO WEEKS OF EXPLORATION AND CREATIVITY. DURING OUR CAMP YOU WILL HAVE THE OPPORTUNITY TO:

- ★ GAIN AN ACCREDITED AWARD! ★ ARTS WORKSHOPS WITH SPECIALISTS
- ★ CREATE A SHOWCASE! ★ EXPLORE NEW ARTS

WEEK 1
TUESDAY 12TH - FRIDAY 15TH

WEEK 2
MONDAY 18TH - THURSDAY 21ST

PRICE
DAY: £35
WEEK: £70
*BANK HOLIDAY FEES CLIN: £10

AGE
7-11YR OLDS

Where?
VICTORIA HALL
BOURTON-ON-THE-WATER

Arts Award

LEARN MORE

MOSSINATOR
ROOF CLEANING SYSTEMS

Enhance the appearance of your property
with our quality assured friendly service

Moss Removal & Roof Cleaning - Roof Maintenance & Repairs
Render & Brickwork Cleaning - Patio & Driveway Cleaning
Installation of Bird Protection & Chimney Cows
info@mossinator.co.uk - 01451 828101

CHORLEY'S

Cotswolds Heritage since 1862

Complimentary Auction Valuations



Sold for £8,000

Monthly Auctions of Art & Antiques
Probate & Insurance Valuations

Open Valuations every Thursday
9.30am-1pm

01452 344499 info@chorleys.com
Prinknash Abbey Park GL4 8EU

Insight Gloucestershire

Support for sight loss – closer than you think.

If you or someone you care about is living with sight loss, you're not alone. Insight Gloucestershire is your local sight loss charity, offering free, friendly support to help you stay independent, informed and connected.

We work across Gloucestershire – including right here in Bourton-on-the-Water – offering monthly Sight Loss Advice Hubs where you can:

- Speak to your local Sight Loss Advisor who will offer information and tailored advice
- Try out useful equipment and resources to help with daily life
- Get one-to-one technology support
- Join a relaxed social group – a chance to meet others over a cuppa

Your local hub takes place at:

The George Moore Community Centre, The Salmonsbury Room, Moore Road, Bourton-on-the-Water. On: the **1st Wednesday of each month**. Drop in between **1-2pm** to browse resources, get support, or join the social group from **2-4pm**. Appointments are also available. Family and friends are welcome to attend with you.

We're always happy to welcome new volunteers to support these local hubs and groups. To find out more about this hub, book your appointment or discover our other services, get in touch: Phone: **01242 221170** Email: info@insight-glos.org.uk

Website: www.insight-glos.org.uk

Insight
Gloucestershire

ABOUT THE BOURTON BROWSER

All articles received will be printed wherever possible in the magazine & on the website, however we reserve the right not to print anonymous letters or anything of a defamatory or controversial nature.

We have a limit of 300 words per article.

If your contact details appear in the Bourton Browser they will be on our website copy. If you do not want this to happen, tell us. Unless we hear from you, we will assume consent.

The views of contributors to the Bourton Browser may not necessarily be those of the Editor, nor can the Bourton Browser accept any responsibilities in connection with any companies or organisations mentioned.

Guided Walks with the Cotswold Voluntary Wardens



Details of the walks available are described on the website (below). **Please check walk details carefully on the website, including whether booking is necessary. Additional walks may be published on the website.**

<https://www.cotswolds-nl.org.uk>

Naunton to Guiting Power – Tuesday 6th May – Moderate 3hr 6ml. From seeing two surviving churches with towers, and passing now closed and converted chapels, we also pass Cotswold stone quarries and have scenic views – weather permitting. Bring a drink/snack. Start: 9.30am The Black Horse Inn, Naunton. Please park considerably near the pub. OS Map ref: SP 119 235.

Walking the Ways 3 (of 5) – Tuesday 20th May – Moderate 4.5hr 8ml. This walk leaves Guiting Power, heading south to join the Windrush Way, walking the fields to Aylworth and on past the Golf Club to the village of Naunton. Here we walk briefly alongside the River Windrush and join the Wardens' Way on undulating field paths back to Guiting Power. Please bring refreshments for a mid-morning and picnic lunch stops. Refreshments are available in the village following the walk. Subsequent walks are planned for 17th June and 22nd July. Start: 10.00am Guiting Power Village hall, Church St. Guiting Power. OS Map ref: SP 094 246.

PLEASE use appropriate footwear as some walks may be steep and muddy in places. EASY - Length may vary but terrain is mainly flat (level); MODERATE - includes some hills and rough ground. STRENUOUS – may be rough underfoot and ascents and descents may be steep. We welcome guide and hearing dogs - sorry, others not allowed.

Walks are free although we do invite donations to help fund our conservation and improvement work.

Fiddle player RIC SANDERS (Fairport Convention) and singer/guitarist VO FLETCHER

WESTCOTE VILLAGE HALL Friday 6th June at 7.30pm

Back in Westcote by popular request!

Tickets £15 from 07834 493637 or westcote.bookings@gmail.com

**Probably the largest club in Bourton
(270 members and growing)!!**

If you have ceased working full time or raising a family and are interested in any of the following, **why don't you look us up?**

We neither require or give any qualifications

(Groups underlined are recently formed **New Groups**)

Archaeology Ballroom Dancing Reading Books
 Playing Bridge Country Dancing
 Chatting & Drinking Coffee Watching Interesting Films
French Conversation Table Tennis Indoor Curling
 History Mahjong Mexican Trains!!
 Nature walks and Talks Photography Reading Plays
 Reading and Writing Poetry Quizzes
 Playing the Recorder or Ukelele
 Playing Scrabble Playing Skittles (in a pub!!)
 Country Walking Eating Sunday Lunch!
Walking Basketball Short Discovery walks
Watercolour Painting

Group meetings are held throughout the week in Bourton, Stow, Moreton and The Rissingtons.

Our upcoming General Meeting, held in the Royal British Legion Hall in Bourton-on-the-Water is on Wednesday 28th May, from 10am to 12 noon. This will be our AGM where we will enjoy a short review of our newly formed groups.

Everyone Welcome

**For more details on all these topics, please go to go :
www.bourton.u3asite.uk**

Bourton 1 Mile Race

Friday 9th May



Bourton Roadrunners hosts its annual Mile race at 7.30pm on Friday 9 May.

We're always very grateful to Bourton residents for their patience and tolerance around the disruption this causes.

This year we're expecting around 250 runners, so we can expect some increased traffic before and after the race. We'll encourage runners to use the main car parks in the village. We'll do our best to discourage people from using residential parking or the leisure centre.


We have permission to close the High Street and Rissington Road for the race. The High Street will be closed from about 7.15pm – 8pm and Rissington Road from about 7.20pm to 7.40pm. The closures are to ensure the safety of runners, marshals and traffic alike.

We'd be extremely grateful if people could avoid driving at these times especially along Rissington Road. If you do need to travel during these times, please follow the instructions of one of the many marshals or police who'll do their best to help.

For those wanting to watch the race we'd recommend watching it somewhere along the Rissington Road for a longer, uninterrupted view or on the High Street near the Chip Shed (which is very close to the finish line). We expect the first runner to finish in about 4 minutes 25 seconds.

Once again, this year we're supporting a number of different charities including the Midlands Air Ambulance, North Cotswold Foodbank, CALM (Children Achieving Lifelong Movement) and Gloucestershire Young Carers. If you have any questions about this year's Bourton 1 mile race, please email bourtonroadrunners@gmail.com or leave a message on our Facebook page.

Ian Toffs




Bourton Podiatry Clinic

HEALTHY FEET ARE HAPPY FEET

- Professional nail care
- Diabetic foot care
- Corns, callous, hard skin
- Verruca treatment
- Painful heels and feet treatment
- Fungal infection
- Footwear advice

TO BOOK AN APPOINTMENT, PLEASE CALL
01451 824301 07557 766651
 OR GO ONLINE
WWW.BOURTONPODIATRY.COM

Units 6-7, Upper Slaughter Business Centre,
 Upper Slaughter, GL54 2JJ





GREENER OHMS ELECTRICAL

"Bringing sunshine into your homes"

- * Domestic electrical repairs and installations
- * Commercial electrical repairs and installations
 - * Solar panel systems [PV]
 - * Battery storage installations

Unit 1, Cotswold business park, Range Road,
 Witney, Oxfordshire, OX29 0YB.

www.greenerohms.co.uk
01993 684020

The *"Highly Recommended"*
Lady Painters
 High Quality Decorators

07743 659434

theladypainters@hotmail.com

Call Emma for a FREE Quote



Sun 18th May
 'Classic Wheels'

Combe Mill, Blenheim Palace Sawmills, Combe, Oxon OX29 8ET

Combe Mill will be welcoming the Fairford Classic Car Club for this event. If you have an interest in cars this is the event for you. Bring the children along to the re-vamped 'Tinkering Area' lots to do and see.

Combe Mill will be open 'In Steam' with all machinery working and being demonstrated by our lovely volunteers. Coombe Mill is a Late 19th Century Grade 11 Listed Water Mill, on Blenheim Palace Estate, by the River Evenlode, in its day it was the workshop for Blenheim Palace estate. The Tea Room will be open for refreshments to enjoy in the Picnic area by the River Evenlode. Browse our *Mini Market* too. Tombola, Raffle and BBQ. Dogs welcome. Parking free.

Adults £9.00, Seniors £7.50, Children are now FREE.

Web Site combemill.org

Also open every Wednesday until end of October for self-guided tours. Adults £5.00, Seniors £4.00. Children now FREE. Tea Room open, just call in for a cuppa & piece of cake.

DESIGNER POOCH
 -your local dog groomer-

C&G Qualified dog groomer with over 20 years experience

Nail clippings available
 from as low as £5!

Ring now for bookings!
 t. 01451 822984
 m. 07805 415474

Dog products also available!

1A Victoria St, Bourton-on-the-Water, Cheltenham GL54 2BU

Thank you, Sue Pacini

After 13 years serving the parish as a volunteer Tree Warden (recently re-titled 'Tree Friend'), Sue Pacini, ably assisted from time to time by husband Bruno, has decided to step down from her role.

Over the years she has monitored and cared for trees around the Parish, given advice to the Parish Council about tree management and in particular, cared for the trees in the Jubilee Orchard. Those particular trees did not have a very good start in life, suffering from two hot summers, being damaged by overzealous strimming, and occasional vandalism. However, with the help of Howard Crook, some were replanted and since then are generally doing well. Sue watered them as they became established, fed them and carried out pruning when required to ensure they continued to thrive. Hopefully they will do so for many years to come.

Thank you, Sue, for the work you have done for the Parish over the years. Enjoy your 'retirement'.

Andy Roberts

Entry
 £6

Open Garden & Plant Sale

Pasture Farm, Upper Oddington, GL56 0XG
 Sunday 25th & Monday 26th May 2025
 11.00 am – 5.00 pm

This wonderful garden is open in aid of the National Garden Scheme and proceeds from the **plant sale** and the **refreshments** will be generously donated to Kate's Home Nursing. Hundreds of beautiful, strong and healthy annual, perennial, herbaceous and vegetable plants will be for sale.



• Free roaming
 Bantams, ducks
 and Kunekune pigs

• Mixed borders,
 topiary, orchard and
 many species of trees

Kate's
 Home Nursing
 Your local hospice, at home

www.kateshomenursing.org

Charity no: 1203159



MORETON in MARSH BOWLING CLUB
 Why not come to play bowls?

OPEN MORNING
SATURDAY 31ST MAY
10.00 a.m. onwards

Try a sport you may not have played before.

If you already play bowls, why not join us?

We have a wonderfully
 appointed clubhouse and a great green.



Visit our website for contact details
moretoninmarshbowlsclub.co.uk

Email: mbcbowling1@gmail.com

We would love to meet you.

All ages welcome.

Bring family and friends.

Exciting News from
STOW TRAVEL

WE ARE
Relocating!

As from 6th May 2025, we will
 be in our new office with
 onsite parking & great coffee!

So please come and visit us

Our new address will be:
 1 Dehavilland Road
 Upper Rissington
 GL54 2NZ

Our Email - info@stowtravel.co.uk
 & phone number 01451 810255
 remain the same!

For the rest of 2025 if you come in and book with us in the office we
 will give you a bottle of Champagne as a thank you.



Thrill-Seekers Rejoice:

The Biggest Theme Park Openings of 2025!

2025 is shaping up to be an unforgettable year for thrill-seeker travel, with one colossal opening leading the charge – Universal's Epic Universe! This is Universal Orlando's most ambitious project yet, featuring five immersive worlds, including Super Nintendo World, Dark Universe, and How to Train Your Dragon. It's set to be a game-changer for theme park fans!

Of course, high-speed roller coasters and fantasy lands aren't everyone's cup of tea, but fear not – with nearby beaches and spectacular cities nearby there is something for everyone. Over in Spain, set right by plenty of beachside hotels is PortAventura - celebrating its 30th anniversary, and as home to Europe's tallest coaster, Shambhala, it's a must-visit for adrenaline junkies. Meanwhile, Universal Singapore (who doesn't want to go to Singapore!) is introducing Minion Land, and little ones will love the upcoming "Wild Oasis" – a toddler friendly area opening in Spring 2025, where they can meet colourful birds and adorable capybaras.

Frozen fans, get ready to start saving! In 2026, Disneyland Paris is unveiling a 2 billion Euro expansion, bringing the enchanting world of Arendelle to life. Already open in Hong Kong and Tokyo, World of Frozen will transport visitors to Elsa's Ice Palace and beyond.

And if that's not enough, the biggest-ever expansion of Magic Kingdom in Florida is underway! Soon, we'll be cruising down Route 66 in a brand-new Cars-themed land, bringing Radiator Springs to life with two exciting attractions. But my most anticipated addition? Villains Land! Featuring 13 of Disney's greatest baddies, including Maleficent and Jafar, it promises to add a delightfully dark twist to the park.

As a self-confessed theme park fanatic, I can't wait to experience these incredible new additions – and I'm sure I'm not alone. So, thrill-seekers, buckle up – 2025 is the year to chase adventure!

Catherine Williams

CLARKE & HUMPHRIES
 MODERN BUILDERS, PROFESSIONAL MAINTENANCE, TRADITIONAL VALUES

One of the Cotswolds Premier Building
 Companies is also offering a

PROFESSIONAL HANDYMAN SERVICE

Experienced multi-skilled tradespeople
 ensuring excellent value for money
 and reliability...

01451 822 577

maintenance@clarkeandhumphries.co.uk

Community Day Clubs: Friendship and Fun in Bourton-on-the-Water



In the heart of Bourton-on-the-Water, Cotswold Friends is creating opportunities for friendship and support through its Community Day Clubs. These welcoming gatherings are designed for older people and carers to enjoy companionship, conversation, and a variety of activities in a safe, social setting.

The Bourton-on-the-Water Community Day Club meets at The Lounge on Market Close on the second and fourth Wednesday of each month, from 10:30am to 2:30pm. For just £4.50, attendees can enjoy a full session including a hot lunch or choose a morning or afternoon session with refreshments for only £1.

Each session offers a relaxed and friendly environment where guests can chat, play games, do crafts, or simply enjoy each other's company. Clubs often include light entertainment, music, or themed seasonal activities. Whether you're a regular or a first-time visitor, you'll be warmly welcomed.

The clubs also provide valuable respite for carers, who can either take a break or attend alongside their loved one. It's a small but meaningful way to ease isolation and bring joy to the community.

Cotswold Friends couldn't run these clubs without the help of dedicated volunteers. There are always opportunities to get involved—whether it's helping with teas and coffees, joining in activities, or offering a friendly smile to make someone's day.

If you or someone you know would enjoy coming along to the Day Club—or if you're interested in volunteering—call 01608 652019 or emailing support@cotswoldfriends.org. You can also find more information on the Cotswold Friends website: www.cotswoldfriends.org.

Let's keep our community connected—one cup of tea and friendly chat at a time.

Dave's Aerials & Satellites

Credit & debit cards accepted.
 Optical fibre, Networking & European Satellite Specialist.
 All types of aerial, satellite & CCTV camera work undertaken.

Thank you for supporting your local engineer for over 35 yrs.

Call free on 01451 495014

T. 07928 203589 E. aerialdave@hotmail.co.uk

www.davesaerialsandsatellites.co.uk



Elkstone Village Gardens Open Day Sunday 22nd June 2025. 2pm - 6pm.

Enjoy the atmosphere of this historic Cotswold village and see parts of it not accessible to the casual visitor. Amble through lovely, and varied, private gardens and enjoy the special village atmosphere. Relax with cream teas, homemade cakes or ice creams.

The Grade 1 listed Norman church, the highest in the Cotswolds, will be made extra special with glorious flower displays. Hear its wonderful peal of bells ring out and a community choir singing. The churchyard has various environmental initiatives including the wildflower Coronation Meadow, bug houses installed to encourage wildlife and the environmentally friendly loo!

Visit the plant stalls to take back a reminder of a special day. All proceeds from the event go towards the upkeep of our church and our village hall.

For further information contact the organisers:
Email: admin@elkstonevillage.com

Hike for Home-Start Cotswolds!

Wednesday 7th May 2025

Join us at 9.30am for a 2-hour circular walk through beautiful private countryside, in aid of family support charity, Home-Start Cotswolds. The walk will start and finish at Old Gore Barn, Fosse Cross, GL54 4BZ.

Walk with refreshments: £15
Walk with 2-course lunch: £30

Refreshments will be served after the walk, or you can stay longer for a delicious lunch.

Visit our website to buy tickets in advance:
www.home-start-cotswolds.org.uk




Registered Charity:
1110632

Everyone is welcome, including well-behaved dogs on leads. Lunch places are limited so please book early. Free parking at the venue.

We would like to thank Yard Space for generously providing the venue and catering and Calmsden Farms for very kindly giving us access to their land for the walk.

Tickets : www.home-start-cotswolds.org.uk

Massage

by
Svitlana

Massages for Women Men & Children

From £25 per half hour

**Tel. Svitlana on:
 07467 324392**



Rates and Dates for advertising in the BOURTON BROWSER

Full details: www.bourtonbrowser.co.uk

6 x 9 cm per mth £36, per 3 mths £77, per 6 mths £148, per 12 mths £275.
 9 x 12 cm per mth £72, per 3 mths £154, per 6 mths £296, per 12 mths £550.

Deadline 15th of preceding month.

To enquire about booking, email team@bourtonbrowser.co.uk State size required & attach advert as a jpeg or pdf. I will confirm if space is available or you may call 01451 822431 to discuss.

Advertising spaces are limited, early booking & prompt payment is essential.

Delivery—We print 2300 copies & aim to deliver to every house in Bourton-on-the-Water & Clapton-on-the-Hill.

Ray Dodd, Advertising Manager

VE DAY Celebrations

Sherborne Village Hall Sunday May 11th 2pm to 5 pm

Join us for
Afternoon Tea with Prosecco
 £8.00 pp
Children's Afternoon Tea
 £5.00



- Fancy dress competition for children and adults
- Crafts for the children
- Music of the era
- Bar

All proceeds to Help for Heroes



Car Boot in aid of Sunflowers Suicide Support

Sunday May 25th, 10am -4pm

Venue: car park, Manor Field, Station Road, Bourton-on-the-Water. £10 a pitch. Cars can arrive after 9am to set up. Please contact Carol Groom to book a pitch on 07906 789867 or email: c.groom187@yahoo.com. No hot food can be served at any pitch.

Carol Groom

Bourton Rovers:

A Season of Grit and Growth!

As the curtain falls on the 2024/25 season, Bourton Rovers' adult teams have showcased nothing but resilience and determination. Our Hellenic League squad battled fiercely all season, narrowly missing a top-four finish. An amazing achievement worth noting was that this season they remained unbeaten at home across all competitions—quite a remarkable feat!

The Witney League team faced many challenges adapting to the top division this season, with injuries impacting their progress. Despite this though, a fantastic cup run towards the season's end provided a well needed morale boost for coaches and players. We look forward to this momentum carrying into the 2025/26 season.

Our U18s experienced a tough debut season, also grappling with injuries, including the loss of their goalkeeper. Undeterred, they're already bouncing back and preparing for the upcoming season, welcoming new talent from the U16s as some players transition to adult football.

Behind the scenes, our dedicated volunteers have been instrumental, organising an April volunteer day to ready the club for summer events. Their efforts ensure that both teams are poised for success in the new season.

As we begin to embrace the summer months, we invite the community to join us! With events lined up all summer and the clubhouse offering the best-priced pints in the village, come on down and join us, as a nonprofit club all proceeds go to supporting your local football club – and believe me, in these tough financial times, community support is well and truly needed!

Catherine Williams



Letter for Browser: from Amanda Davis

Writing in a personal capacity about Coaches Experimental Traffic Regulation Order for a 2-coach drop off and pick up bay on Meadow Way. Introduced by Gloucestershire County Council Highways, it's to run from Easter to Autumn 2025.

For openness I'm a Parish Councillor. An extraordinary Parish Council meeting will give residents a say, as your voice hasn't been heard.

This "Experiment" has no mechanism to judge its success. It appears reliant on correspondence received by Highways, Councils and anecdotal experiences. So your observations will help.

I support finding an alternative to last year's chaotic situation, following the Bourton Vale's Coach Park closure. We need to:

- provide a great visitor experience and
- reduce inconvenience and risk to residents and businesses

However, this ETRO is not it:

- no restriction to stop coaches doing what they did last year (Cotswold School, Station Road, Rissington Road, turning manoeuvres impeding traffic flow, public safety risks)
- no mechanism to manage 20-minute restriction

In recent news, coach operators considered this site unsuitable for their passengers. Many will not use it.

- Should passengers be dropped off here?
- Walking up the Avenue past both schools at finishing time, with thousands of students, manoeuvring school buses
- Coach-loads of passengers gathering outside Jubilee Lodge, on narrow pavement waiting for coaches as students, including primary age, try to walk home
- Affects parent collections at 3.30pm, traffic flow from residents living nearby, Industrial Estate businesses, Jubilee Lodge ambulances
- Coaches on Meadow Way asked to turn right at Station Road, returning to Pulham's depot
- 20 minutes max: what if they don't move on? Passengers will be stranded until their coach can stop to collect them.
- No toilets. No shelter. Long way to walk to/from the village.

My perspective as a local resident: this improves nothing!

Amanda Davies

Stow physio at bourton

Now offering SHOCKWAVE TREATMENT!

For a friendly, professional physiotherapy service

- Sports Injuries
- Post-Surgery
- Back/Neck Pain
- Women's Health
- Neurology
- Pilates

and all general physiotherapy for adults & children

01451 822660

Lucy Walmsley & Team

www.stowphysio.com | info@stowphysio.co.uk

Hawthorne Court, Bourton Industrial Park, Bourton-on-the-Water, GL54 2HQ

Servicing specialists covering all models of Land Rover ® and Range Rover ® vehicles. MOTs arranged & work carried out. Servicing, diagnostics, repairs, brakes, parts & accessories.

www.bourtonlr.com
01451 810 364
Bourton-on-the-Water
Gloucestershire
GL54 2AR

LAND ROVER ® & RANGE ROVER ® VEHICLE SPECIALIST

Gloucestershire Arthritis Trust (GAT)

Announcing the closure of GAT

It is with great sadness that our hospitals will close the Trust after 41 years and having raised £3,166,673.

I have been a member for 26 years and raised thousands from coffee mornings, fetes and selling remade greetings cards at £1 each. In 2017 I was awarded a BEM (British Empire Medal) for my work with the Trust.

Should you wish to leave a gift to the Trust in your Will, or request donations to the Trust in place of flowers at your funeral, the payments should now be made payable to "Cheltenham and Gloucester Hospitals Charity" and marked 'for the Arthritis Fund'. Payments should be sent to, The Charity Office, Royal Hospital Gloucester, GL1 3NN. Your money will be spent supporting the Orthopaedic Surgeons, Rheumatologists, Physiotherapists and wards, so they can care for patients with arthritis, just as GAT did.

In the county 66,000 are suffering from arthritis, 90 of these are children, the youngest being only 2 years old.

We have had to consider what to do with all the cards and stamps that you have kindly delivered to the black boxes at Alice's Cottage and 19 Moore Rd. **Please don't deliver any more Christmas cards to us**, but, for now, you can keep other greeting cards coming, as we plan to continue to remake cards until all the stationary, envelopes etc have been used up.

Thank you for all your support over the years, this has helped over 86,000 people with arthritis. I hope you will continue to support the new charity.

Times change, and not for the better, as the cost of running the Trust now outweighs the donations.

Raising money this way has been my way to say thank you to all the staff who helped me get better after seven new hips. Keep walking!

Mollie and Derek Wise

HIRE of HALLS

Baden Powell Hall lettingsbph@gmail.com

Baptist Church Hall Tim Newstead 01451 821523

Bourton Cricket Clubhouse jlthepavilion@gmail.com

Bourton Farmers Market Miles Salmon 07980 080073

British Legion Hall Branch Office 01451 824303

Broadwell Village Hall Tracey Spragg

broadwellvillagehall@gmail.com

Cotswold Hall, Northleach Jacques Astic 01451 860366

George Moore Community Centre Jo Herbert 01451820712

assistant.clerk@bourtononthewater-pc.gov.uk

Lower Slaughter Village Hall annclass@yahoo.com

St. Lawrence's Mrs Gill Willett 01451 821484

familywillett@hotmail.co.uk

Victoria Hall Lydia 07768722514

Wyck Rissington Village Hall Vicky Lathe 07584 188 200

vhwyckriss@gmail.com

Wren

A bird we cannot resist,
About the size of a child's fist.
Tho' so little is Jenny Wren,
She stands tall again and again.
Foraging among the leaves
Below bushes, hedges and trees.
Shows a will of iron
And the heart of a lion.
Takes everything on
Drought, snow, flood, storm.
Confronts all stress and strife
And How Best to Take on Life.
Tho' stays the very smallest,
Her attitude puts her with the tallest.

Hugh O'Connell



MAKE LIFE EASIER

- Large range of Mobility Aids
- PPE • Hire services
- Wheelchairs
- Mobility Scooters and repairs
- Stairlifts
- Rise and Recline furniture
- Adjustable beds
- Cosyfeet shoes and slippers

FREE HEARING HEALTH CHECK

THE MOBILITY STORE SWINDON

7 Clive Parade
Cricklade Road,
Swindon SN2 1AJ
01793 701313
swindon@thehearingandmobilitystore.co.uk

THE MOBILITY STORE MARLBOROUGH

56 George Lane,
Marlborough SN8 4BY
01672 511550
wiltshiremobility@mail.com

THE MOBILITY STORE WROUGHTON

6 Devizes Road
Wroughton SN4 0RZ
01793 815083
wroughtonmobility@mail.com

THE MOBILITY STORE BOURTON ON THE WATER

Lansdowne
Bourton on the Water GL54 2AR
01451 810088
bourtonmobility@mail.com

FREE LEVEL ACCESS PARKING AT ALL STORES
www.thehearingandmobilitystore.co.uk

**COTSWOLDS INSPIRED.
CRAFTED FOR OUR COMMUNITY.**

Box Bush offers in-house produced specialities,
focusing on provenance, seasonality, and flavour.

Gelato, Coffee, Pastries & Deli


Opening Hours - 8.30 am - 5 pm
Open 7 days a week

info@boxbush.co.uk
High Street, Bourton-on-the-Water, GL54 2AN

You'll find us too on

ALLOTMENTS TO RENT LOWER SLAUGHTER!

 Enjoy your own fresh produce

 Connect with nature

 Be part of a welcoming allotment group

Rental starts from just £11 a year!

Various plot sizes available.

Parking and easy access.

For more details, contact the Parish Council Clerk

 clerkspc@gmail.com  07918 636841

11th Lechlade Annual Vintage Rally & Country Show, 3rd/4th/5th May 2025

Venue:- Langley Lane, Clanfield, Bampton, Oxon OX18 2RZ

Opening at 10am all days.

Cars| Motor Cycles| Commercial Vehicles| Collections|
Miniature Steam| Tractors| Models| Military Vehicles| Craft|
Fun Fair| and much more.

Highworth Silver Band | National Animal Welfare Trust Fun
Dog Show | Farrell School of Irish Dancing.

Britannia Majorettes | Kencot Ukulele Players.| Angels for
Animals Association Fun Dog show.

Trade Stands | Car Boots| Refreshments. | Raffle & Tom-
bola each day. **Beer Tent** open all day and music in the eve-
ning. Admission:- Adults £6.00 | Concessions £4.00 | U16`
Free (with paying adult). Parking FREE. Dogs on leads wel-
come. WEB SITE WWW:- [LECHLADE COLLECTORS CLUB](http://LECHLADE_COLLECTORS_CLUB)

E-mail:- info@lechladecollectorsclub.co.uk

also see us on Facebook

Oh Merry May

The first of May,
Summer's on its way,

May Poles gaily draped in bright colours,
Headdresses made of fresh picked flowers.
Morris men dressed in their county attire,
Leaping and dancing to their hearts' desire.

VE day on May the 8th,

Time to reflect and commemorate.

We will light our beacons and spread the light,
As we remember those that went to fight.

Carol Groom



Christian Aid Week 2025

Sunday 11th to Saturday 17th May

This year marks the 80th anniversary of Christian Aid.

We will again be fundraising at St Lawrence's Church & across
the churches in the Benefice, raising money for the world's
poorest people at a time when we see ever increasing need
due to famine, wars & the effects of climate change.

Donations this year can be made through the churches . Do
call in & pick up an envelope. More information is available
online at Christian Aid Week 2025 | Christian Aid, or from
janeteturnbull@gmail.com

We are also holding fundraising events, including a coffee
morning with raffle in St Lawrence's Church, on Saturday May
17th from 10am to 12 noon.

Do come along & support this good cause! **Janet Turnbull**



Cotswold Custom Clothing

Workwear & Print Specialists

- Workwear
- Uniform
- Safety Wear
- Sports Kits
- Banners
- Posters
- Caps
- Fashion

Corporate & Hospitality
Brand Merchandise

Enjoy 10% off your first order – Quote Code: BB10

Visit us: www.cotswoldcustomclothing.co.uk

Email: hello@cotswoldcustomclothing.co.uk

Call: 01451 497197

LOCAL GROUPS AND ORGANISATIONS

for amendments, team@bourtonbrosner.co.uk 01451 822431

Archery Club	GRArcheryClub@gmail.com
Badminton Club	clclare@gmail.com
Bell Ringers, BOW	Stephanie Hemming 01451 810996
Bell Ringers , Gt Ris	Sheila Jesson, 01451 820395
Bourton Road Runners	Nicky Patterson Brr.clubsec@gmail.com .
Bourton Rovers Chairman	Liam Williams 07769 216528
Bourton Vale Cricket Club	Kevin Langley 07375 033609
Bourton Vale Tennis Club	www.bourtontennisclub.org
Brass & Silver Bands	Stephanie Hemming 01451 810996
Community Day Club	Support Service team 01608 652019
Cotswold Friends	01608 651415
	www.cotswoldsfriends.org
Cotswold Yoga	Nazuna Yeo 07490858775
Dementia Friendly Café	Kathy Chesters 07746 672726
Fitness League	Kathy Kirk 01993 882350
Gardening Club	Sheila Thorpe 07973391741
Glos. Advanced Motorists	Rod Harrison. 01451 821605
Hockey Club	admin@bashc.co.uk
Jubilee Lodge	01451 823100
McTimoney Practitioner	Tina Hamer 07884 312559
Men in Sheds	Keith 01451 831886
Moreton Bowls Club	Linda Bennett mbcbowling1@gmail.com
North Cotswold Arts Association	Jeni Smith 078506 50763
North Cotswold Gymnastics Club	Caroline Gill 01451 263130
OPEN 4U	Barbara Newstead 01451 824225
Panto Group	Angela Layton 01451 821344.
Probus Club	Kevin Hick 01451 860435
Rotary Club Nth Cotswolds	Steve Whincup 07488 365908
Royal British Legion Bourton	Bill McKenzie 01451 824303
Rural Cinema	Mollie Wise 01451 822365
Scottish Dancing Group	Christine Bucknall 01993 830760
	Bucknallce@gmail.com
Short Led Walks	Carol Price 01451 810305
Stay strong & Steady	Cally Maxwell 07957 546 067
	cotswoldactivehealth@gmail.com
Stow Textile Group	Julie Smith 01608 651006
T'ai Chi	Valerie Ward 07779 746346
u3a Bourton & District	www.bourton.u3asite.uk
Village Warden	Steve Cotton 07729 114833
Volunteer Help Centre	01608 651415
WI	Pat Taylor 07518 457 652
Windrush Carers Support Group	Barbara Newstead 01451 821523
4 Shires Swimming Club	Jo Shaw membership@4ssc.uk.uk

White Paper. Plans are currently under discussion to combine Gloucestershire's District and County Councils, although there are three models under consideration. The timeline for completion of the reorganisation is May 2028 and onwards. As part of this the Parish Council will be reviewing assets in the parish to determine how any proposals for devolved services from the county or district councils could be taken forward.

Help Shape Our Housing Future: Take Our Survey!

Your home is more than just a place to live—it's where memories are made and communities thrive. We're launching a housing survey in June to understand your needs and improve housing in Bourton-on-the-Water.

Why Your Opinion Matters:

Influence Policies: Help shape housing policies and funding.

Improve Options: Identify gaps and improve housing choices.

Strengthen Communities: Contribute to reducing homelessness and enhancing quality of life.

Survey Details:

Quick & Easy: Takes less than 10 minutes.

Delivery: Look out for it in your letterbox or complete it online via the QR code.

Topics Covered: Affordability, accessibility, sustainability, and community.

Who Should Participate? Everyone! Homeowners, renters, families, singles—your input is valuable.

Make a Difference: Your feedback will help create a more inclusive, affordable, and sustainable housing future. Together, we can build stronger, vibrant neighbourhoods.

Watch out for the survey and share your thoughts!

Strategic Plan 2025-28: The Parish Council has developed an outline Plan and will be developing draft objectives on which residents will be consulted over the next few months.

Springvale Allotments vacant plot: There is one plot available at present – anyone interested should contact Jo Herbert, Assistant Clerk on assistant.clerk@bourtononthewater-pc.gov.uk

Committee Structure & Council Meetings Schedule: The Council agreed to trial a new model for six months which will consist of:

- Parish Council Meetings (every two months)
- Finance Committee Meetings (quarterly)
- Community and Services Committee (to incorporate the current Parish Environment, Youth and Wellbeing and Community Centre Committees) (quarterly)
- Planning Committee to incorporate Highways matters (approx. 3 weekly)
- Staffing Committee (twice yearly and as required).

Meeting dates and Committee Chairmen will be agreed at our Annual Meeting on 7th May, together with the election of the Chairman of the Parish Council for 2025-26.

County Councillor Paul Hodgkinson's report highlighted that he is working with Gloucestershire County Council Highways to progress urgent repairs that are required to the road at The

Steeps/Bourton Hill caused by a blocked drain under the road resulting in water damage problems.

District Councillor Jon Wareing (Bourton Village Ward) updated that the Parish Council had proposed funding a Visitor Traffic Management Strategy project through the Tourist Levy to address visitor traffic and parking issues. Residents should report damaged or missing street nameplates to the Parish Council, who would then contact CDC.

Annual Parish Meeting 26th March: Thank you to all who attended this year's meeting. Updates were given on the year's activities by Bourton Youth Club, Play Gloucestershire (Play Rangers), Mindsong, Cotswold Voluntary Wardens, North Cotswold Rotary, the Village Warden and the Parish Council's Tree Friend. Also, from County and District Councillors, the Parish Council Chairman and Committee Chairmen.

Dates of May meetings:

The **Annual Meeting** will be held at 7pm on Wednesday 7th May and an **Ordinary Parish Council Meeting** at 7pm on Wednesday 28th May 2025. Both meetings will be held in the Windrush Room at the George Moore Community Centre. Residents are welcome to attend our Council and Committee meetings.

For further details and enquiries, please contact the Parish Council Clerk Sharon Henley, by emailing clerk@bourtononthewater-pc.gov.uk or visit the Parish Council website

www.bourtononthewater-pc.gov.uk.

Our schedule of meetings is available at www.bourtononthewater-pc.gov.uk/the-council/meeting-calendar/

80
VE DAY
80TH ANNIVERSARY
A SHARED MOMENT OF CELEBRATION
8 MAY 2025

Join us for the lighting of
THE BEACON
On the Village Green
at 9.30pm

To Celebrate the Great British
Fish and Chips here are some
Lip Smacking deals on this dish
for our residents!

Kingsbridge
20% off
5-6pm

The Chip Shed
10% off
5-9pm.
quote VE10%

BOURTON-ON-THE-WATER
PARISH COUNCIL

The *Bourton Browser* is printed by Peter Dunford,
01608 658104, petedunf@aol.com