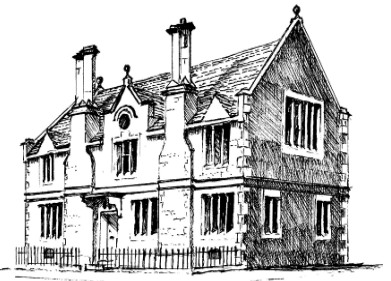


BOURTON BROWSER

ISSUE NO.320 www.bourtonbrowser.co.uk



December 2025

DIARY DATES

November

28th November, Christmas Tree Light Switch on, 5.30pm, Village Green, some businesses open late, with craft stalls, festive food etc. Free entry to Motor Museum, 6-8pm, if you have a resident's card. Full details page 3.

December

1st, 15th, 29th Mindsong, Sing 2 Remember **GMCC**, 10.30am & 2.30pm. 07764 212506 or 01451 821216.

3rd Sight Loss Advice Hub, **GMCC**, drop in 1-2pm, join social group 2-4pm. Call 01242 221170, or email info@insight-glos.org.uk

5th Panto Group Annual Christmas Quiz, **VH**, 6.45pm for 7.30pm start, £20 for team of 4, to book a table contact Margaret on 07791 917684. See page 17.

5th-7th Gift Fair, **VH**, 10am-5pm. All welcome.

6th Christmas Charity Band Concert, Waterloo Band & Bugles of the Rifles, Cotswolds School, 7.30pm, See page 5 & poster on page 20.

8th Probus, 10am, **GMCC**. Guest speaker details TBA. See page 15.

9th WI, **VH**, 7pm. Christmas Party. See page 5.

10th Irene's Charity Knitting Circle, **WP**, 10am-12pm. See page 2.

10th & 24th Bourton Community Day Club, 10.30am - 2.30pm, **MC**, GL54

Continued on page 2, column 1.

Baptist Church Hall = **BCH**
British Legion Hall = **BLH**
Cricket Club Pavilion = **CCP**
George Moore Community Centre = **GMCC**
Jubilee Lodge = **JL** Market Close = **MC**
North Cotswold Sale Room = **NCS**
St Lawrence Church = **StLC**
Victoria Hall = **VH** Willoughby Place = **WP**

Bourton-on-the-Water Parish News

News from the Parish Council for December

Christmas Tree in the River

Hopefully by the time you read this the Christmas Tree in the River Windrush will be in place and we will have had the formal switching on of the lights on 28th November. The tree will remain in place until January, in-keeping with tradition.

Coach Parking ETRO Update

The Experimental Traffic Regulation Order (ETRO) trial for coach pick-up and drop-off in Meadow Way is ongoing. The regulations have been amended to a waiting time of 5 minutes (plus a 6-minute grace period) and the signage has been updated to match. A stakeholders' meeting is planned for early 2026 to review the scheme, with quarterly meetings thereafter. Feedback continues to be welcomed via highwayconsult@gloucestershire.gov.uk, with a copy to clerk@bourtononthewater-pc.gov.uk.

Strategic Planning and Surveys

The Council approved its Strategic Plan 2025–28 and accompanying Action Plan. Thank you to those who responded to the public consultation.

Unsustainable Tourism

The Parish Council has formally acknowledged that Bourton is experiencing unsustainable tourism levels. This follows increasing visitor numbers and associated pressures on infrastructure and parking. As part of our Strategic Plan, we hope to develop a Visitor and Traffic Management Strategy via a consultancy project in due course.

George Moore Community Centre

A full building survey of the Community Centre will be undertaken to inform future maintenance planning and budgeting.

Grants and Community Support

A £500 grant was awarded to Dementia Friendly North Cotswolds to support their café initiative. The Council also continues to support Bourton Youth Club and Play Rangers sessions, which offer valuable activities for local children and young people.

Commercial Space Available to Rent

Are you looking for a central, accessible location to grow your business or host your services?

The Parish Council is pleased to offer a versatile commercial space for rent at **The George Moore Community Centre**, located in the heart of Bourton-on-the-Water.

Key Features:

- Central location with excellent footfall
- Flexible space ideal for office use or as a therapy room



Continued on page 2, column 3

The *Bourton Browser* is run by volunteers & delivered monthly FREE to every household in the Village.

Go to the "Get in Touch" tab and then complete the contact form to send questions, articles (max.300 words), adverts & event details to the team.

Copyright © Bourton Browser 2025

The **DEADLINE** for Adverts & Articles for the January edition is **Noon on 13th December**

BROOKES
WINDOW CLEANING SERVICES

Professional window cleaning services catering for residential & commercial properties.

What we offer:

- Old School Traditional Window Cleaning
- New Pure Water Window Cleaning
- Gutter Clearing, Cleaning & Repair
- Cladding Cleaning
- Jet Washing
- Soft Washing
- Conservatory Cleaning
- PVC Cleaning

4, 8 and 12 weekly scheduled plans available

ASK FOR YOUR FREE QUOTE

Friendly, respectful & competitive pricing

📞 07546 724 715
📠 01280 423 177

COLOUR YOUR HOME PAINTER AND DECORATOR

PROFESSIONAL FEMALE PAINTER & DECORATOR

PAINTING, DECORATING, SANDING, VARNISHING AND WALLPAPER STRIPPING & HANGING

info@ColourYourHome.co.uk
www.ColourYourHome.co.uk

FOR FREE QUOTES AND ESTIMATES PLEASE CALL

HAYLEY ANDREWS
07799 887 413

full circle hair design
Est. 2020

Wishing everyone a Merry Christmas and a Beautifully Styled New Year!

Leigh 07826 014-595

fullcirclehairdesign.co.uk

Unit 4, Old Station Yard Business Centre
Bourton on the water GL54 2RZ

Continued from page 1 column 1

- 2HE. 01608 652019.
- 10th u3a Scrabble, **GMCC**. 2-4pm. 07341 094206. peterdawson790@icloud.com
- 10th u3a, **BLH**, 10am-12noon, 'The songs of Noel Coward' by Peter Gill. £2pp. www.bourton.u3asite.uk See page 14.
- 10th Horticultural Club, **BCH**, 7.30pm, Lottie Newit, demonstrating 'Winter containers with a nod to Christmas'. See page 3.
- 11th Probus Christmas Lunch Sherborne Arms, Aldsworth, 12.30pm.
- 12th Dementia Friendly Cafe, **StLC**, 2-4pm, 07746 672726. See below.
- 12th THR33 Perform a night of Boyzone, Take That & Westlife, **BLH**, 7.30pm, See page 3, tickets £12. ticketsource.co.uk/dvevents
- 13th Tayler & Fletcher, Fine Art, Vintage & Interiors auction, from 9.30am, **NCS**, GL54 2AR. 821666.
- 21st Farmers Market, **BLH** Car Park, GL54 2AR. 8.30am-12.30pm 07980 080073.
- 21st Santa visiting Bourton, 11.30am, **VH**. See Rotary article page 5.

Dementia Friendly Cafe

We look forward to seeing you all on Friday 12th December at 2.30pm, when children from the Primary School will be entertaining us with carols.

On that note, all of us at the cafe send out a big HAPPY CHRISTMAS to all our members and look forward to a healthy 2026.

Bill Wragge

Regular Weekly Bourton Events

- Mon. "Old Sweats" Meeting, **BLH**, 10am—12 Noon, 07714 852364 bourton.secretary@rbl.community
- Mon & Fri, Bourton Men in Sheds, 9.30am-12.30pm, Behind **RBL**, Keith 01451 831886.
- Mon. & Thurs. Stay Strong & Steady, **BLH**, 1-2.30pm. 07957 546067 cotswoldactivehealth@gmail.com
- Mon. & Fri. Cotswold Yoga, **VH**, Mon 10-11am, Fri 5-6pm, 07490858775.
- Tue. Drop in Digital Help Group, **GMCC**, 10.30am-12.30pm. 07707 281803.
- Tues. "Together on Tuesdays", soup lunch, **StLC**, 12-2pm.
- Thurs. Flexercise, **BLH**, 10-11am. 01993 882350 kathy.kirk@live.com

Irene's Charity Knitting Circle

We meet on the 2nd Wednesday of each month, 10am- 12.00pm at Wiloughby Place, Station Road, Bourton-on-the-Water.

Do come and join us. Enjoy coffee/tea with biscuits.

Everything we receive will be donated to worthy causes.

There is no parking available at Wiloughby Place, but we can collect anyone who needs a lift within Bourton.

We would like to wish everyone a very Happy and Peaceful Christmas.

For details, call either:

Irene or Peter on:
01451 824175

or 07764 699594.



Continued from page 1, column 2

- On-site parking available
 - Fully accessible facilities
- ☑ Utilities & service charge included
- Whether you're a start-up, freelancer, community group, or established business, this space offers a welcoming and professional environment to thrive.

Availability: From 1st December 2025
Contact: Parish Council Office 01451 820712

clerk@bourtononthewater-pc.gov.uk

Date of Next Council Meeting

The next Parish Council meeting will be held at **7pm on Wednesday 7th January 2026** in the Windrush Room at the George Moore Community Centre. The full meeting calendar is available at: www.bourtononthewater-pc.gov.uk/the-council/meeting-calendar

For further details, please contact the Clerk, Sharon Henley, at clerk@bourtononthewater-pc.gov.uk or call 01451 820712.

The Parish Council would like to wish all residents and businesses a Merry Christmas and a Happy New Year.

Used Postage Stamps Wanted



I'm collecting used postage stamps for the RNBI again this year. There will be a box outside 7 Salmonsbury Cottages, during the month of January 2026, for them to be put into.

Please note the charity likes there to be a centimetre of paper around the stamps when they are cut from the envelope. Thanks, **Pam Clifford**

Bourton Parish Council Official Christmas Tree

Light Switch On

It's that magical time of year again! Join us on Friday, 28th November at 5:30pm for the Official Light Switch-On of the Tree in the River, a much-loved local tradition, that marks the start of the festive season. After the lights go on, several local businesses will be staying open late, offering exclusive deals, festive treats, and plenty of Christmas cheer (see the list below). Bring your family, meet up with friends, and soak up the atmosphere, we can't wait to celebrate with you! Keep an eye on social media pages for updates in the coming weeks.

Dial House – Christmas Market – Artisan stalls and a visit from both Grinch and Santa!

The Willow – Christmas Market – 30 Stalls!

Old Manse – Christmas Market – Some stalls still available, contact directly

The Den – Open late – Pulled Pork Baps and Extensive Hot Chocolate menu

The Old New Inn – Complimentary Mulled Wine and mince pies after the switch on

Quirky – Open til 7.30pm

The Little Nook – Open til 7.30pm

Box Bush Café – Homemade hot dogs and Hot Chocolate (laced with Rum or Baileys!)

Chester House Hotel – Complimentary Mince pies and festive nibbles

Magic and Mischief – Open til late, locals' discounts apply



Boho House – open til late, locals' discounts apply.

Smiths – Festive burgers available through to the end of December

Chestnuts/Chestnuts FashionFix – Range of offers throughout the store, 10% discount available to locals

Christmas Shop – Complimentary Festive treats and 20% discount for locals. Open til 8pm

Fresh 4 Lunch – 20% Off Snowman Hot Chocolate

The Croft – Open for supper until 9pm

Gift Times - Mulled cider tasting with 10% off purchases and a free gift

The Motor Museum - Free entrance for locals between 6pm and 8pm on the 28th of November to celebrate the Christmas light switch on with a Bourton Resident card.

Bourton Vale Horticultural Society your friendly garden club

A mild but very wet autumn has meant that there still lots of colour in the garden with dahlias, chrysanthemums and even roses. But, with the first frost predicted next week by the time you read this the dahlias will be blackened.

David Fisher was our speaker at the November meeting and gave a very enjoyable and thorough briefing on "garden tools and equipment maintenance". He brought with him a vast range of tools from petrol and electric versions of the larger items, such as chainsaws and mowers to the humble hand tools we all rely upon on a daily

basis, such as secateurs and shears. This was a revelation to some of us who have never seen or looked for our spark plugs and jolly handy for the folks who got their snips and loppers well sharpened ready for the pruning ahead.

A former farmer, David was very knowledgeable, and answered many queries such as "why doesn't my strimmer start anymore?" He also talked quite a lot about the eco benefits and convenience of the modern cordless electric tools.

Hopefully we will now all be looking carefully at our gear over winter and giving it some TLC so we don't have to get it out of a neglected hibernation next spring to find an old pile of rust.

Our competition of a 'Display of Seed Heads', was won by Lu Webb.

Our next meeting is on Wednesday, 10th December, starting at the usual time of 7.30 pm in the Baptist Church Hall in Station Road, Bourton, when our speaker Lottie Newitt who will be demonstrating "Winter containers with a nod to Christmas". Lottie will also be bringing plants for sale.

The competition will be a Christmas Table Decoration.

Stay dry

Sheila Thorpe, 07973 391741
sheila@bobblefarm.co.uk



THR33

**PERFORM A NIGHT OF
BOYZONE, TAKE THAT & WESTLIFE**

BOURTON ON THE WATER ROYAL BRITISH LEGION

FULLY LICENSED BAR

FRIDAY 12TH DECEMBER | 7:30PM

TICKETS: £12

ticketsource.co.uk/dvevents

BOOK NOW



THE
OLD NEW
INN

Give the gift of timeless Cotswold charm with one of our new gift vouchers!

Whether you're treating someone to a memorable meal in our cosy restaurant and bar, or a relaxing hotel stay in the heart of the Cotswolds, our vouchers are the perfect way to share something truly special.

Simply visit our site, choose your voucher and the amount, then either send it straight to them, or print it yourself to pop in to a card. The perfect Christmas gift!

Check out our
vouchers

T: 01451 820467
E: enquiries@theoldnewinn.co.uk



OUT AND ABOUT in December

Mondays - Yoga for All, 9.30-10.30am, Pilates 10.35-11.30am, Wyck Rissington Village Hall. 07950 424037 Enquiries: franyoga@rocketmail.com

Mondays - Northleach Bridge Club, Cotswold Hall, Northleach, 7:15pm. Contact northleachbridgeclub@gmail.com

Daily until-3rd January Christmas at Blenheim Palace, Woodstock, OX20 1UL. Illuminated Walk, Wizard of Oz in the Palace, Christmas Market. www.blenheimpalace.com

Daily until-4th January, Join the Big Batsford Elf Hunt! Santa's helpers have gone missing and they're all hiding at Batsford Arboretum – find them to win a prize! £3 per child, plus Arboretum admission fee. Visit www.batsarb.co.uk for details.

Daily until 11th January, Robin Hood Pantomime, Everyman Theatre, Cheltenham. www.everymantheatre.org.uk

1st-14th Bath Christmas Market. www.bathchristmasmarket.co.uk

1st-30th December Spectacle of Light, Sudeley Castle, Winchcombe, GL54 5LP. Discover the Court of King Arthur and the Magic of Merlin as you embark on an illuminated adventure. www.sudeleycastle.co.uk

1st-31st (but closed on 25th), Christmas at Charlecote, National Trust, house dressed for a winter masquerade ball, winter trails, family activities. Charlecote, Nr Wellesbourne, CV35 9ER. www.nationaltrust.org.uk/visit/warwickshire/charlecote-park

5th-7th, 12th-14th, 18th-23rd Christmas on the Farm, Cotswold Farm Park, Guiting Power, GL54 5FL. Variety of family friendly activities. For details and to book, go to, www.cotswoldfarmpark.co.uk

5th Rissington History Society "Christmas Ghosts: The Tradition of Winter Tales in Gloucestershire" by Kirsty Hartsiotis. Seasonal refreshments. 2.30pm. Village Hall, Upper Rissington GL54 2QW. Visitors Welcome £3.50. Kate O'Brien 07815 606770 information.RLHS@gmail.com www.rissingtonslocalhistorysociety.com

6th-7th, 14th, 16th-21st Cirencester Christmas Market, Cirencester Market Place, Sat. 9am-5pm, Sun 10am-4pm.

11th-23rd Cheltenham Arts and Crafts Market, The Promenade & Long Gardens, Cheltenham, GL50 9SA. 30+ stalls with unique gifts. 10am-6pm.

12th Kate's Home Nursing Christmas Carol Concert, St Edward's Church, Stow-on-the-wold, 6.30pm, tickets £20. See poster page 6 or www.kateshomenursing.org

13th & 14th Christmas Tree Festival, St John's Church, Great Rissington. Sat 10am-6pm, Sun 12pm-6pm. Refreshments available. Free entry, donations welcome. See page 13.

Cotswold Merrymouth Inn

13th Century Coaching Inn & Venue

Party/Events Venue

Looking for a venue for your event

Licensed bar,

Modern Commercial Kitchens

Internal seating for 70 / 100

Large parking area & outside space

Ideal for Birthday parties, wedding receptions, anniversaries, wakes

Call for more info.

Live Events for 2025

Blues Club - All Welcome

18th Sept - John Doe Trio (Blues)

16th Oct - Cadillac Kings (R&R/Blues)

13th Nov - Split Whiskers (Blues)

Tickets £12.50 online £14 on door

Doors - 7pm Food & Drink available on night

See website for details & booking

Scan QR for Events



www.cotswoldmerrymouth.co.uk - 01993 256620

cotswoldmerrymouthltd@gmail.com - OX7 6HR    



FOR SALE / WANTED ITEMS



To advertise items such as Household items, Toys, Garden Equipment etc, complete the contact form on the "Get in Touch" tab. The advert should be no more than 15 words. It must be received **before 12 noon on the 15th of the month**. No commercial adverts accepted for this section.

For Sale

Trespass flocked double airbed with electric pump. Used once.
£18.00 07553 932784

For Sale

Beaumont bread maker, Includes instruction manual and recipes.
£10. 01451 820917

Bourton WI



Bourton WI held their AGM on Tuesday.

Janet (treasurer) and Carol (in charge of Catering) retired from their posts this year and they were both thanked by the President and the Secretary for their many years of dedication.

Officers presented their reports and after very welcome tea and cake, the second half of the evening began. A Quiz.

Five teams took part. There was much hilarity over The Seven Deadly Sins, Dingbats, Pictures of famous people when they were young and the inevitable General Knowledge round.

Several potential new members came to the meeting and (hopefully) enjoyed themselves.

The next meeting will be the Christmas Party.

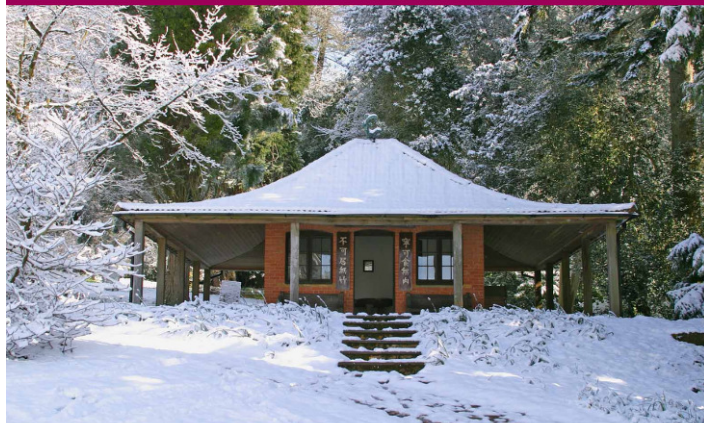
We meet every second Tuesday at The Victoria Hall at 7pm. New members are most welcome.

For more details please contact Victoria Jackson (President) on 075496 40492.

June



Celebrate Christmas at Batsford with magical winter walks, festive food, unique gifts, decorations, and our huge range of Christmas trees.



www.batsarb.co.uk

Batsford Arboretum & Garden Centre, near Moreton-in-Marsh.
Open daily except Christmas Day.

IN PAIN???

TRY "THE BACK WOMAN" AT BOURTON!

- McTimoney Practitioner est. 1999
- Dry Needling / Low Level Laser
- Also Equine / Canine McTimoney
- Registered with The Association for McTimoney Practitioners



Tina Hamer, mp, mamp

Gentle and effective treatment for a variety of conditions

37 Roman Way, Bourton-on-the-Water, GL54 2EW

Tel: 01451 542016 / 07884 312559

Email: tina.hamer@sky.com

www.bourtonmctimoney.co.uk

Massage Cotswold

Massages for Women
Men & Children

From £25 per half hour

Call or WhatsApp

Svitlana on:

07467 324392



North Cotswolds

Rotary



Christmas Charity Band Concert – Featuring Carols and Festive Tunes - Saturday 6th December 7:30pm

North Cotswolds Rotary are delighted to welcome back the Waterloo Band and Bugles of the 7th Rifles, to the stage at The Cotswold School in Bourton-on-the-Water on Saturday 6th December. The Band will be playing their specially arranged Christmas programme which will include the opportunity to sing along to carols. There will be a fully licensed bar, a free mince pie at the interval and a raffle with prizes that include Christmas hampers. Come along and enjoy the warm atmosphere and festive spirit. Accompanied children under 15 are free and you'll be helping raise funds for the Royal British Legion and Rotary Charities. Tickets on the door or from Bourton-on-the-Water and Stow-on-the-Wold Post Offices or click on the QR Code:



SANTA IS COMING TO BOURTON

Santa is making a personal visit to Bourton-on-the-Water on Sunday 21st December 2025.

The plan is, the children accompanied by an adult, will attend Victoria Hall from 11.30am dressed in Christmassy outfits. Adults pay £3 and children £2. If fine they will have a pleasant walk by the Windrush (off road) to Birdland and on their return they will visit Father Christmas who will be in Victoria Hall from 12.00pm. Having had a chat with him they will then have a choice of one of his presents. Parents, grandparents and other friends and relatives will have a photo opportunity.

Santa has to be away by 2.00pm. See North Cotswolds Rotary Facebook Page for more details.

Psst... Have you heard the news?

**Santa Claus
is Coming
To Town!**

*Adults must accompany children
Adult: £3
Child £2 includes a gift*

**Stow on the Wold
Social Club 7th Dec at 11:30**

**Bourton on the Water
Victoria Hall 21st Dec at 11:30**

TREE OF LIGHT

Bourton-on-the-Water will once again be running the Tree of Light up until Christmas.

The Tree in the river will be decorated with lights and relatives can make a charitable donation in memory of a loved one and know that one of the

lights is in their memory. You will receive a card in recognition of your donation and a list of those being remembered will be displayed locally.

Donations and forms from
www.northcotswoldsrotary.org

Click on the QR Code

John Barber



North Cotswold Food Bank

Do you have a few hours to spare and would like to volunteer for the North Cotswold Foodbank?

The charity is looking for two people to lead its outlets in Chipping Campden and Stow-on-the-Wold.

Each role would mean volunteering for a few hours per week (but not necessarily every week).

Food bank Manager Kevin Carden said: "There are no special qualifications required – we just want friendly people who have lots of common sense, good organisational skills, and are comfortable using a computer.

"If you want to join a charity which makes a real difference in our area, this could be a real opportunity."

North Cotswold Foodbank, based in Guiting Power, provides more than 1,700 food parcels every year for more than 4,000 people from its seven outlets in the Cotswolds, and is almost entirely run by volunteers.

The Stow outlet is open on Wednesdays, 10am-12. The Chipping Campden outlet is open on Fridays, 12-1.30pm.

For more information about the Volunteer Lead roles in Stow and Chipping Campden, please go to the website www.northcotswold.foodbank.org.uk



Charity Christmas cards now available

This Christmas our beautiful cards feature artwork by beloved local artist, Terry Harrison, capture the spirit of the season — and every purchase supports the work of Kate's Home Nursing.

Our two cards feature wonderful winter scenes: "Carol Singers" and "A Festive Welcome." Each design captures the spirit of the festive season, making them perfect for sending heartfelt messages to friends and family. Available in packs of 10 for just £5.00, every purchase helps support Kate's Home Nursing, ensuring compassionate end-of-life care for those facing the last days of their lives. Make a difference with every card you send.

If you're looking for meaningful stocking fillers, we also have a [new online shop](#) that sells Kate's Home Nursing merchandise, including pens, cotton tote bags, nurse 'bugs', enamel badges, and foldable, recycled tote bags—perfect little presents that will help spread the word for Kate's Home Nursing.

Please go to www.kateshomenursing.org/shop to purchase cards and stocking fillers.



**30 Years
of Hospice Care at Home**



Be part of our story in 2026

Volunteer
Share your story
Send us photos and tell us how we've helped
Join us to celebrate 30 years of care

30 Years of Care in 2026

Have we helped you or someone you know over the past 30 years?

In 2026, Kate's Home Nursing will be celebrating 30 years of providing free hospice care at home to families across the North Cotswolds. This is a huge milestone — and we'd love you to be part of it.

We're looking for:

- Volunteers to help us run events and fundraising activities in 2026

- Creative minds to share ideas for effective campaigns
- Stories and photos from families we've supported over the years
- This is your chance to get involved, celebrate our history, and help us shape the future.

Together, we can raise awareness and vital funds so that more families can access compassionate, local end-of-life care. Please email maria.graham-martin@kateshomenursing.org if you can help.



**KATE'S
HOME NURSING**
CHRISTMAS CAROL SERVICE

St Edward's Church
Stow-on-the-Wold
FRIDAY
12 December 2025
at 6:30pm

Tickets £20
Available via:
www.kateshomenursing.org or
please scan the QR code above.

PERFORMERS
Emily Campbell
Richard Coxon
Imogen Cox
Isabella and Darcey Cox

READERS
Lynda Hicks
Gerard Nock
Arthur Parkinson
Allison Tighe

 **Kate's
Home Nursing**
Your local hospices, at home.

STONES
Traditional
handcarved
sandblasted
memorials
carving commissions
undertaken

Peter Shaw BA HONS, DIPLA
Mobile 07974 577924
Workshop Tel/Fax 01451 821414
Tel 01451 821671
Email petershaw1951@btconnect.com
www.stonesmemorials.co.uk
Bourton on the Water

EST. CHELTENHAM 1940

 **BADHAM
PHARMACY**

NEW PHARMACY IN UPPER RISSINGTON!

 **Badham Pharmacy**
Unit 2, The Village Square
Upper Rissington
GL54 2FL
TEL: 01451 828226

A new community pharmacy open six days a week
Monday – Friday 9am – 6pm
Saturday 9am – 12:30pm


**ASK ABOUT
FREE DELIVERY**

 **Badham Pharmacy**
11 The Square
Stow on the Wold
GL54 1BQ
TEL: 01451 830623

Stow Pharmacy, also open six days a week
Monday – Friday 9am – 6pm
Saturday 9am – 5pm

**ASK ABOUT
MINOR AILMENTS**

www.badhampharmacy.co.uk

 **Bennett
Pest Control**

Domestic and commercial
Routine pest control plans

Rodents
Wasps
Garden pests

Contact
07712539913
joe@bennettpestcontrol.com

Message from the Church

Hope is a word we often hear at Christmas, whatever our age: "I hope the weather improves for our journey", "I hope I get the present I've asked for", "I hope Father Christmas comes", "I hope the turkey is big enough.", "I hope they all get along....". It's a word which keeps us busy with the tasks of the festive season.

Yet the word hope has a far bigger meaning, as it describes the longing of the human heart for a time of love, joy and peace. Hope lies at the heart of Christmas. Not just those hopes associated with food and festivities, but the hope we are beckoned to share in with the birth of Jesus Christ, Son of God and his promise that through him nothing can separate us from the love of God.

I am always so aware that the festive season is not a happy time for us all.

That grief, isolation or hardship of any kind can make us hope when it will all be over. Whatever our circumstances, we are invited to come close to the manger and look upon the baby Jesus where we find hope - for the world and for each of us, not just for Christmas, but for all times and seasons.

This Christmastime, as a community of welcome, kindness and friendship, my hope and prayer is that we all might know God's love, joy and peace in our hearts.

You are very welcome at any of our services each week and over the Christmas season.

A very happy Christmas to you all and every blessing for the new year!

**With love and prayers,
Rev Hannah**



The Benefice of Bourton with Clapton & The Rissingtons
For Pews News with information

www.bourtonparishchurch.co.uk

Email: admin@bourtonparishchurch.co.uk

All welcome on Sundays - 11am service every week
Remember – church is open 10am-4pm and heated every day -
Christmas Services

Christingle Breakfast Church - Sat 13th Dec - 9am start – everyone welcome

Carols on the Green – 6pm 14th Dec – Dress up warm for an outdoor sing!

Carols in the Church – 6pm 21st Dec

Crib Service – 4pm Weds 24th Dec (come dressed up as a character from the story!)

Midnight in Bethlehem - Christmas Eve Communion – 9pm 24th Dec

Christmas Morning Communion - 11am 25th Dec

28th December - 11am Service of Readings & Carols for Christmas

Together on Tuesdays – Lunch Club 12-2pm - Dec 2nd and 9th only

BumbleBeez (parent & child group) Thurs. 9-11am - NOT 25th Dec or 1st Jan

St James Clapton-on-the-Hill: 7th Dec 9:30am Holy Communion, Mon 15th Dec

6:30pm Carol Service, 25th Dec 9:30am Christmas Holy Communion

Revd Hannah Allen 01451 822918



The Water Church/Bourton Baptist Church

Minister: Rev Sue Woodley

Manse: 01451 820055

Mobile: 07828 781246

Church Office: 01451 824225

E-mail: minister@bourtonbaptist.co.uk

Sunday Morning Service 10.30am All Welcome

Communion Sunday 10.30 am

Cafe' Tots Every Wednesday from 9.15 - 11.30 am

Lots of lovely toys, craft and refreshments. All Welcome

Open4U Open every Thursday from 10.00 am until 4.00 pm in the Church Hall.

A light lunch is served at 12.30 pm and refreshments are available through the day.
Everyone is welcome.

See our website for this month's diary and more details of all our activities

<http://www.bourtonbaptist.co.uk>

Roman Catholic Parish of Our Lady & St. Kenelm, Stow on the Wold

stow-bourtoncatholic.net

Fr. Stephen Lambert 07836 384932

Email:

stephen.lambert@cliftondiocese.com

Weekend Masses: Sat. evening: **Vigil Mass 6 pm.** Sun. morning: **9 am Sung Mass.**

Weekday Masses: At 9 am every day (No Mass Sat. mornings). Mass on Tues. takes place at St. Lawrence's at 9 am.

The priest welcomes all enquiries about the Christian faith, Baptisms, Confirmations, Weddings, Funerals, the Sacrament of Reconciliation, Blessing of houses, etc.

Additional dates: **Wed.** 3rd and 10th Dec. 6pm. Bible study of Advent & Christmas readings with John Huntriss. **Mon. 8th Dec.** 6pm. ROTARY CLUB Carol Service. - **Tue. 16th Dec. 6 pm** Penitential service of Reconciliation.

Christmas Masses:

CHRISTMAS EVE Wed. 24th December 6 pm Candlelight Vigil Mass with carols and Blessing of the Crib. 10pm 'Midnight' Solemn Sung Mass with carols.

CHRISTMAS DAY Thur. 25th December. 10.30am Solemn Sung Mass of the day.

St. Stephen's Day Fri. 26th December Mass 9am

FEAST OF THE HOLY FAMILY Sun. 28th December: 6pm. Vigil Mass (on Sat. 27th) 9am Solemn Sung Mass (on Sunday). (No morning Mass Sat. 27th Dec.)

Week beginning Mon. 29th Daily Masses at 9am. as usual, inc. St Lawrence's Tue. 30th.

Fr. Stephen

QUAKERS

The Religious Society of Friends
Every Sunday 11am

at The Friends Meeting House,
Pytt Lane, Burford

Enquiries welcome Myra Ford
01451 810484.

To request a free info pack,
email: outreach@quaker.org.uk

For The Younger Generations



THE COTSWOLD SCHOOL

A message from the Headteacher

As we approach Christmas, there is so much to celebrate here at The Cotswold School! This term has been filled with hard work, creativity and community spirit across all year groups. I would like to take this opportunity to thank our students for another wonderful year, their enthusiasm and dedication continue to make our school such a special place. As we look ahead to 2026, we are excited for the many opportunities and achievements yet to come.

The Cotswold School Careers Fair

Our annual Careers Fair was once again a huge success, welcoming 50 exhibitors from a wide range of industries to inspire our students about their future pathways. We are incredibly grateful to all the volunteers and professionals who gave up their time to speak with our young people and share insights into their careers.



Remembrance

To mark Remembrance Day, the whole school came together for a moving ceremony. We gathered to watch The Cotswold School Combined Cadet Force (CCF) parade and to observe a two-minute silence, honouring the lives lost in wars and conflicts around the world.



Sixth Form Applications

Following our recent Sixth Form Open Evening, applications for September 2026 entry are now live on our website. We look forward to welcoming many of our current Year 11 students, as well as welcoming new students into the next stage of their academic journey.

Christmas Activities

As we move into the festive season, we look forward to our annual Christmas Concert at St Lawrence Church in Bourton and our much-loved Christmas Bonanza - an evening



of music, joy and community spirit.

Upcoming Events

We are also delighted to invite alumni to a Festive Drinks Reception on Thursday 4 December, before the Christmas Carol Concert. Guests can enjoy a school tour, reconnect with classmates and staff and raise a glass, with drinks kindly sponsored by Wine Traders. To register, please visit www.cotswold.gloucs.sch.uk/alumni-events.

Enjoy the festive season!

www.cotswold.gloucs.sch.uk

The Cotswold Youth Theatre

What an exciting and busy term it has been so far!

During the half-term break, we hosted a fantastic 2 -day Spooky Arts Camp. The children had a wonderfully creative time making Halloween movies, crafts, paintings, and even opera plays. We made so many wonderful memories!



All our drama classes are currently busy preparing for their Winter performances and LAMDA exams. We are especially looking forward

to December 6th, when our Juniors will be performing Wind in the Willows. This performance is particularly exciting as it will be the first time our home-educated Junior students join us on stage. Additionally, we will be hosting a Winter Showcase to feature our LAMDA performers as they prepare for their upcoming exams, and some of our senior actors will be appearing as well!

We have some very exciting news...

Our very own director Jennifer Morafkova will be showcasing her Opera talents at a special Christmas Concert, returning from her studies from Royal Welsh College of Music and Drama. She will be joined by an amazing singer and pianist Rebecca Reavley and together they will be showcasing a wonderfully christmasy programme filled with Festive and Operatic classics. Come along and support the cause - raising money for our non-profit organisation Sparkhouse Creatives.

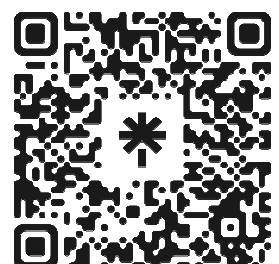
Duration: 1hr with an interval, very relaxed so bring along your family and friends

Please purchase your tickets by going online at <https://linktr.ee/cotswoldyouththeatre> or by scanning the attached QR Code.

Thank you for your continued support, and we look forward to seeing you at our upcoming events!

Warm regards,

Cotswold Youth Theatre



Local Groups and Organisations for the YOUNGER GENERATION

Beavers	Stephanie Lewis	07308 144397
	1stbourtonbeavers@gmail.com	
Bourton Gymnastics	Tom Eden	01451 870778
	Bourtongymnastics.co.uk	
Bourton Primary School		820458
Bourton Road Runners Juniors	Chris Hartley/Richard Buffton	0772 0509894
	brrjuniors@gmail.com	
Bourton Rovers Youth (U10 Upwards) -	Catherine Williams	07889 694545
Bourton Rovers Youth (U9 & below) -	Amy Wright	07876 458571
Bourton Vale Cricket Club	Lucy Gillespie	07949 227128
	craiglucygillespie@yahoo.com	
B'n Vale Equestrian Centre	Leanne Launchbury	821101
Bourton Vale Tennis Club	Kingsley Harris	07879 644218
	www.bourtontennisclub.org	

Bumblebeez babies & pre-school tots	Pat Taylor	07518 457652
Cafe Tots	Sue Woodley	07828 781246
Children's Jujitsu	Andy or Hayley	07951 587398
Cubs	Nick Hawke	07788 406728
	1stbourtoncubs@gmail.com	
Hockey	Rhys Davies	07817 108970
Little Hurricanes (Babies & Toddlers)	littlehurricanes@hotmail.com	
Pre-School	Lisa Sorley	07950 048066
Scouts	Phil	1stbourtonscouts@gmail.com
Squirrels	Emily	1stbourtonsquirrels@gmail.com
4Shires Swimming	Jo Shaw	membership@4ssc.uk.uk
Taekwon-do	Lee Chapman	01285 640500
The Cotswold School		820554
Youth Club	Lynda Hicks	07867 121122
Youth Theatre	Sarah Dowie	sarah@cotswoldyouththeatre.co.uk

**JENNIFER
MORAFKOVA**

**REBECCA
REAVLEY**

— IN CONCERT —



20TH DECEMBER | 17:00-18:30

ST LAWRENCE, BOURTON-ON-THE-WATER



Make Volunteering Your New Years Resolution! Give yourself and your community a boost!

Bourton Scout Group has grown significantly over the last 2 years. We now have Squirrels, Beavers, Cubs, Scouts and Explorers, giving young people the opportunity to get involved in scouting from the age of 4 up to 18. However, each section currently has a waiting list, as the increase in numbers of young members has outpaced our growth leader volunteers.

Scouting enables and encourages personal development and lets our young members understand the world around them, preparing them for the future. Our young leaders and adult volunteers are a critical part of this. Volunteering has also been proven to benefit adults, through being part of a social, cross generational team with a purpose.

Do you think you know what scouting is? Think again. Scouting is continually evolving to adapt to modern life. Could volunteering with Bourton Scout Group be your new year's resolution? Email Nick at 1stbourtonscoutgroup@gmail.com to find out about the many ways you could be involved. Or contact leaders directly – see Local Groups for the Younger Generation box. All you need is a little enthusiasm and the passion will grow.

Nick Hawke

Servicing specialists covering all models of Land Rover ® and Range Rover ® vehicles. MOTs arranged & work carried out. Servicing*, diagnostics, repairs brakes, parts & accessories.



www.bourtonlr.com

01451 810 364

Bourton-on-the-Water
Gloucestershire
GL54 2AR

LAND ROVER ® & RANGE ROVER ® VEHICLE SPECIALIST



Zena the Barber and Hairstylist.



Cosy little salon based at the George Moore
Community Centre. Bookings available online.

www.zenathebarber.com

Bourton Primary Academy

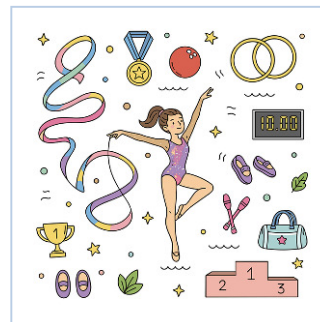
We recently had the opportunity to show some prospective parents for next year's reception cohort around the school. They were led by our wonderful Year 6 prefects and we were delighted with how informative our children were and they fully displayed our school CARE statement.



We are fully into the Festive spirit at school now, learning lines for our Key Stage 1 Nativity and carols for our Key Stage 2 Carol Concert. We are very fortunate that we are able to perform both of these performances at St. Lawrence's Church. It is wonderful to hear the children's voices echo throughout the church. Our choir have been busy practicing in their lunchtime club and will be singing at the Christmas tree light switch on at the end of November and singing for the Dementia friendly café at their last meet before Christmas.

The winter months are fast approaching now, but that has not put a stop to our sporting events. We took a team of Year 5 and 6 children to compete in the indoor sports hall athletics for large schools and once again returned with gold medals! This competition is against children from across Cirencester as well as The North Cotswolds, with most of these schools being much larger than us. The Cotswold School were kind enough to host lots of our cluster schools at a Gymnastics taster event for Year 3 and 4 children. They were given the

opportunity to use a range of equipment including the trampettes, rhythmic gym ribbons and the spring boards and the vaults.



We would like to thank Andy Privett for coming in to show all of the children across the school the benefits of Jujitsu. We hope they all enjoyed their taster sessions, they certainly seemed to on the day!

**Tori Gainford,
Deputy Headteacher**



VJ COLLETT
BOURTON ON THE WATER

ALL MAKES
SERVICING AND REPAIRS

AIR CONDITIONING

DIGITAL FOUR WHEEL
ALIGNMENT

TYRES, EXHAUSTS AND
BATTERIES

MOT

DIAGNOSTICS

01451 820366

WWW.VJCOLLETT.CO.UK



**Bourton
Podiatry Clinic**

HEALTHY FEET ARE HAPPY FEET

- Professional nail care
- Diabetic foot care
- Corns, callous, hard skin
- Verruca treatment
- Painful heels and feet treatment
- Fungal infection
- Footwear advice

TO BOOK AN APPOINTMENT, PLEASE
CALL

01451 824301 07557 766651

OR GO ONLINE

WWW.BOURTONPODIATRY.COM

Units 6-7, Upper Slaughter Business Centre,
Upper Slaughter, GL54 2JJ



Riverside

DENTAL PRACTICE

Book an appointment:

01451 820 306

admin@riversidedentalbotw.co.uk

Our Services Include:

- Routine Check-ups
- Hygiene Appointments
- Teeth Whitening
- Fillings, Crowns & Bridges
- Dentures & Tooth Extractions
- Invisalign

Located in the heart of your community, Riverside Dental Practice offers trusted, high-quality dental care for the whole family.

riverside-dental-practice.co.uk



COTSWOLD GLAZING

Modern & Traditional Windows & Doors
Glass & leaded light repairs
We replace misted units, hinges, locks & handles
Energy rated double glazed units

Office: 01451 832 337
Mobile: 07973 954 171
m.kneville@tiscali.co.uk

1st Bourton Scout Group Carol Singing Fundraiser

The 1st Bourton Scout Group is spreading festive cheer this Christmas season with a Carol Singing Fundraiser, and we'd love for the community to join us!



We will be holding this joyful event at the Mid Counties Co-op on: **Thursday 27th November between 4:30pm–6:30pm**

and **Saturday 29th November between 11am–2pm**

In the true spirit of the holidays, our Squirrels, Beavers, Cubs, Scouts and Explorer Scouts, from our youngest members aged 4 right through to our adult volunteers will be singing a selection of well-loved Christmas carols to bring smiles to shoppers and raise funds for our group. We are delighted to announce that we will be joined by **special guests**, adding an extra touch of magic and community spirit to the occasion!

All proceeds raised will go directly towards supporting the 1st Bourton Scout Group, helping us continue to provide local young people with opportunities to learn new skills, grow in confidence, and give back to their community.

We hope to create a warm and welcoming atmosphere full of festive spirit.

We are truly grateful for the community's ongoing support and for the Mid Counties Co-op's in hosting this event. Together, we can make this a joyful and memorable occasion for all, celebrating the season of giving, togetherness, and song.

From all of us at the 1st Bourton Scout Group, thank you and we look forward to singing with you this Christmas! 🎅

Stephanie Lewis, Beaver Scout Leader

1st Bourton Scout Group

1stbourtonbeavers@gmail.com **07308 144 397**

Four Shires Swimming Club

Whether you're a confident young novice swimmer, a serious older swimmer aiming for County and Regionals, or a Masters swimmer focused on fitness or competition, Four Shires Swimming Club offers a fun, friendly, and supportive environment to help you reach your goals. We welcome swimmers aged 8 and above, starting from Swim England Stage 6, and provide a structured pathway through our Development, Competition, Performance, and Masters squads. This term is our busiest gala season, with recent highlights including South East Regional Championships' competitors and a national silver medal for Masters swimmer Mike Ireland. Our swimmers are also levelling up through an additional Dives & Turns course designed to sharpen racing skills.

With flexible training sessions held at Chipping Norton Leisure Centre, Kingham Hill School, and Sibford School, you'll build skills, stamina, and confidence in a motivating squad atmosphere. We're also currently recruiting for swimming coaches to join our team. Saturday mornings, Sunday afternoons, and weekday evenings available. Swim teaching experience essential. "I love Four Shires because the coaches are really encouraging and always know exactly what I need to work on to improve my times." – Angus, F.

Trial sessions available now! Visit www.4ssc.co.uk or email membership@4ssc.co.uk

Rhona Fraser



EAR CARE CLINICS

WWW.ECCLINICS.COM



SPECIALISTS IN

- Ear Wax Removal
- Hearing Assessments
- Hearing Aids

We specialise in wax removal, primarily using micro suction which is quick and easy as it uses very gentle suction to remove wax. We can also provide a full hearing assessment and supply digital hearing aids from leading manufacturers with the latest technology.

Make an appointment to see us in our new main office in Bourton-on-the-Water.



Please scan the QR code, visit our website or call the number below for our prices and further information.

07514 530070
www.ecclinics.com
admin@ecclinics.com

Stow physio at bourton

For a friendly, professional physiotherapy service

- Sports Injuries
- Back/Neck Pain
- Neurology
- Post-Surgery
- Shockwave Treatment
- Women's Health
- Pilates

and all general physiotherapy for adults & children

01451 822660

Lucy Walmsley & Team

www.stowphysio.com | info@stowphysio.com

Hawthorne Court, Bourton Industrial Park,
Bourton-on-the-Water, GL54 2HQ

CHORLEY'S

Cotswolds Heritage since 1862

Complimentary Auction Valuations



Sold for £8,000

Monthly Auctions of Art & Antiques

Probate & Insurance Valuations

Open Valuations every Thursday
9.30am-1pm

01452 344499 info@chorleys.com
Prinknash Abbey Park GL4 8EU

Bourton Browser Team News

Merry Christmas: We'd like to wish all our readers, contributors and advertisers a very happy and peaceful Christmas. We'd like to say a very special 'thank you' to Myra Ford and Margaret Hollamby who distribute the Browser to our deliverers, and to all our hard-working street deliverers. Special thanks also to our brilliant proof reader, Wendy, who sorts out our typos and errors. The whole team do wonderful voluntary work for the village, we couldn't run the Browser without them! Also, thanks to all our commercial advertisers, whose adverts make the Browser financially viable. Next, a big thank you to our lovely printers Peter and Camilla Dunsford, they are brilliant to work with and go above and beyond in helping us resolve issues. And finally, thank you to Dave King, who keeps our laptops working, and has helped us overcome a number of tricky problems this year.

Thank You: to Pippa Arnott who has been our deliverer for the Station Meadow round and is now standing down.

New Volunteer Deliverer needed for the Station Meadow Round: It is quite a small round, just 15 copies. If anyone can help please get in touch at the email address below.

Updating Groups and Hire of Halls Information: We'd be grateful if community groups and those involved in the hire of halls could check that the information in our columns is still correct. Please email amendments to the address below. We only know what you tell us!

Community Groups' Programmes for 2026: If you have a 2026 programme do email us a copy, it is very useful for putting the 'Diary Dates' column together each month.

Articles: We welcome articles, letters, poems, etc (maximum 300 words) & photographs, from adults, children, local community groups and businesses on any subjects of local interest.

Bourton On-line Village Diary: To see what's going on in Bourton for this, and future months, use the QR code or go to our website, see below.

If you are planning a Bourton based event, email the details to: team@bourtonbrowser.co.uk



We will add them to the on-line village diary and include them in the "Diary Dates" column in the relevant month's Browser. **Events welcome for dates throughout 2026.**

The on-line diary is a useful tool that can prevent major events clashing, so check it before scheduling your event!

Remember we can only put events in if you tell us about them!

team@bourtonbrowser.co.uk

www.bourtonbrowser.co.uk

The Bourton Browser Team



Christmas Treecycling



Recycle your real Christmas tree this January.

Our reliable and friendly team of volunteers will collect your real Christmas tree directly from your front door, front garden or driveway.

Search **Sue Ryder Christmas Treecycling** to reserve your collection today

Reservations close 6th January 2026.

We'll be collecting from 12th to 16th January 2026 from the following postcodes:
GL2 0, GL2 8, GL2 9, GL3 1, GL3 2, GL20 5, GL20 6, GL20 7, GL20 8, GL50, GL51, GL52, GL53, GL54 1, GL54 2, GL54 4, GL54 5, GL55 6, GL56 0
With an optional donation, your Christmas tree could become the gift of expert care and support for seriously ill people and their loved ones.

For more information:

email: leckhampton.fundraising@sueryder.org
call: 01242 246 270

Kindly supported by:



Because no one should face death or grief alone



I would like to say a Big Thank You to all 32 Tractors that joined us on our 2025 Halloween Tractor Run.

We had a great day doing a 30 mile route around the country lanes. Thank You to Steve Rix for the use of his field and to Mr Phipps for allowing us the use of his yard for lunch. Also, thank you to all our supporters en route and to those who donated.

We raised £800 which was shared between Sunflowers Suicide support and Kate's Home Nursing. Both, much needed local charities.

Carol Groom, Charity Ambassador for Sunflowers Suicide Support



Could you be a Home-Start Volunteer?



By volunteering for just a couple of hours each week, your parenting experience could be just the support a family with young children needs.

Being a parent is hard for everyone, for some it can be overwhelming, especially if you don't have family and friends nearby to help. We are a local charity who train volunteers to visit families, to provide them with weekly support and encouragement. It's simple, but we see time after time what a positive impact our volunteers make by visiting their matched family at home, providing a listening ear and helping with everyday tasks.

We offer comprehensive training and support, and our next **FREE** training course starts on the 22nd of January 2026. The training will run on Thursday mornings for 8 weeks, 9.30 am – 1.00 pm in Cirencester.

You'll find all the information and application details on our website, or feel free to email / call us to find out more and discuss the role with us.

www.home-start-cotswolds.org.uk

email: [office@home-start-](mailto:office@home-start-cotswolds.org.uk)

cotswolds.org.uk

phone: 01285 885391



Great Rissington Christmas Tree Festival

At St John's Church

SAT 13th DECEMBER

10am – 6pm

SUN 14th DECEMBER

12pm – 6pm

(following our Christingle service)

Tea, coffee & cake available both days & on Saturday, soup lunches.

Christingle making on Saturday morning – all ages welcome to help!

Prizes will be awarded for the best trees as voted by you – the visitors!

Admission free, donations most welcome

Trees kindly supplied by Wyatts Farm Shop

Bourton Men in Sheds

A big thank you to all who have supported us this year by buying hedgehog boxes, bird tables, bird boxes and garden benches. Many thanks to Bourton Motor Museum for your support and purchases. Now that winter is rearing its head, we are selling large bags of kindling at £5 and large bags of off-cuts at £2. We can be found behind the British Legion, on Mondays and Fridays, 9.30am to 12 noon. Come along for a chat and a cuppa.

Dave Birch



MOSSINATOR®
ROOF CLEANING SYSTEMS

Moss Removal & Roof Cleaning
Render, Brickwork & Patio Cleaning
Solar Panel Bird Proofing

info@mossinator.co.uk - 01451 828101

Independent Travel Agent

Here at Stow Travel we have over forty years experience in the travel industry.

We take pride in tailoring holidays to your personal needs and delivering your dream getaway.

From short breaks, cruises and tours, to luxury travel, Stow Travel goes above and beyond to ensure your trip goes off without a hitch.

Remember -
booking a holiday is a lot more than just a 'click'.

STOW TRAVEL

Now in our new office with on-site car parking

**1 Dehavilland Road, Upper Rissington,
Nr Bourton-on-the-Water, GL54 2NZ**

01451 810255

info@stowtravel.co.uk
www.stowtravel.co.uk



The Lady Painters

High Quality Decorators

07743 659434

theladypainters@hotmail.com

Call Emma for a FREE Quote

u3a Bourton & District

**Probably the largest club in the area
(Approximately 300 members)!!**

If you have ceased working full time or raising a family and are interested in *any* of the following, **why don't you look us up?**

We neither require nor give any qualifications

Archaeology Ballroom Dancing Reading Books
Playing Bridge Country Dancing
Chatting & Drinking Coffee Watching Interesting Films
French Conversation Table Tennis Indoor Kurling
History Mahjong Mexican Trains!!
Nature walks and Talks Photography Reading Plays
Reading and Writing Poetry Quizzes
Playing the Recorder or Ukelele
Playing Scrabble Playing Skittles (in a pub!!)
Country Walking Eating Sunday Lunch!
Short Discovery walks Walking Basketball
Watercolour Painting

Our next General Meeting, held in the Royal British Legion Hall in Bourton-on-the-Water is on Wednesday 10th December, from 10am to 12 noon, when Peter Gill will remind us of the talent and some of the wonderful songs and wit of that most English of Englishmen, **Noel Coward**, who said of himself :

I am an enormously talented man and there is no point in denying it'.

For more details on all these topics, please go to:

www.bourton.u3asite.uk



**Everyone welcome
(Entry £2)**

Further to Mollie Wise's 'Oh How We Miss Them' article from the November Issue.

One big business which Mollie forgot, was Hartwell's Motor and Farm Engineers, specialising in Land Rovers. My husband went there as a stores boy in 1947 and, when it closed in 1986, he was the General Manager. It was a thriving business but the company running it wanted a cash injection, and it was on a prime building site. It was missed by many local farmers. I am not a Catholic, but I expect a lot of peoples also miss the Catholic Church. **Ruth Manning**

DESIGNER POOCH
-your local dog groomer-

C&G Qualified dog groomer with over 20 years experience

Nail clippings available
from as low as £5!

Ring now for bookings!
t. 01451 822984
m. 07805 415474

Dog products also available!

1A Victoria St, Bourton-on-the-Water, Cheltenham GL54 2BU

Bourton Roadrunners

With no formal races on the horizon this week, Bourton Roadrunners' members were able to focus on the club's own competition series, which included any **Parkrun** completed during the first two Saturdays of November. As passionate supporters of Parkrun, Bourton members were out in force at the following venues this weekend:

Bolberry Down, Salcombe: Giles Canning - 29:28 (VM65/1).

Chipping Norton School: Lee Hutton - 27:31 (VM65/2), Louise Townsend - 29:16 (VW50/2), Jenny Evanson - 37:12.



Lorna Shawcross
at Fire Service
College parkrun

Fire Service College, Moreton-in-Marsh: Maxine Emes - 23:19 (2nd Female and VW40/2), Lorna Shawcross - 27:32 (VW60/1), Viv D'Alton - 28:38 (VW60/2), Micheal Balfour - 30:34, Sharon Rees - 33:02 (VW55/3), Simon Jones - 34:11 (VM70/1).

Gunpowder, Waltham Abbey: Susan Hunt - 24:42 (VW60/1).

Kilkenny Lane Country, Carterton: Jaq Underwood - 25:10 (VW55/1), Lisa Braid - 25:11 (VW50/1), Steph Holton - 25:50 (VW60/1), Steve Howell - 26:45 (VM65/2), Claire Louise Carroll - 26:55 (VW60/2), Liz Hulcup - 27:00 (VW70/1), Gilly Howell - 27:04 (VW60/3), Louise Hamilton-Smith - 27:49 (VW45/2), Lee Smith - 28:42 (VW50/3), Robin Smith - 29:43, Gary Holton - 31:27, Kate Price - 32:59, Allie Quinn - 33:18, Linda Edwards - 33:18.

King George V playing Field, Cheltenham: Chris Dry - 29:27 (VM60/3).

Severn Bridge, Chepstow: Rob Williams - 28:57.

Stratford-upon-Avon: Kevin Goodwill - 19:15 (VM35/3 and course PB), Rebecca Townsend - 21:42 (3rd Female and SW25/2).
Louise, Gillian and John



Bourton Probus Club



At our meeting on 27th November all those present were asked to talk for a few minutes on amusing incidents from their lives. This was an amusing and surprising morning's entertainment.

At our meeting on 10th November we had a most interesting talk by Howard Robertson on the Bligh Mutiny. He introduced us to William Bligh, who was born near Plymouth. Interestingly, before the famous mutiny he was friends with Fletcher Christian, who he entertained and who played with his children.

He joined the navy at a young age and rose through the ranks rapidly. Although called Captain Bligh on the Bounty, he was only a Lieutenant, as the Bounty was a small Clipper. It went to Tahiti to collect Breadfruit trees and fruit to take to the Caribbean islands. Although only meant to stay for 5 weeks the boat stayed for several months and when ready to depart, many of the hands were well settled and had partners, and so resented this. Bligh was known as an excellent navigator and seaman, but had a very short fuse and was well known for his violent outbursts.

At the time of the mutiny, 20 seamen were placed in a small longboat which travelled over 3000 miles to Timor, and from where Bligh returned to England. Many mutineers stayed in Tahiti, but 9 went to the Pitcairn Islands, but only 4 survived. Bligh returned and captured many of the surviving mutineers but only 10 got back to England and 3 were hanged.

Later Bligh became the 4th Governor of Sydney and finished his life as a Vice-Admiral. Despite his frequent voyages, he managed to have 8 children by his wife!

Bourton Probus Club is for retired men and women who enjoy good talks and social events. If you are interested in joining us come to one of our meetings or contact our secretary Kevin Hick on 01451 860435.

Roger Harris

Chirps from the Perch, Birdland's Festive Gift Guide

As winter starts to settle over Bourton-on-the-Water, here at Birdland we are looking forward to the festive period, where frost dusts the gardens and the Penguins waddle through the chilly air with their usual charm.

As we look out at the park each morning, we are reminded of how special it is to share Birdland with others, so we have put together a selection of unique gift experiences, perfect for bird lovers this Christmas!

For a truly memorable gift, few things compare to our Penguin Feeding experience. Help keepers feed England's only breeding group of King Penguins and the comical characters that are the Humboldt Penguins, perfect for any Penguin lover!

Our adoption programme offers the opportunity to support and care for our birds, helping to meet their dietary, housing, and social needs. You can choose from Penguins, Flamingos, Owls, Parrots, Pelicans, or Cassowary, with Bronze, Silver, or Gold packages available, allowing you to select the level that best suits the recipient.

For those who'd like to enjoy Birdland all year round, an Annual Membership provides unlimited visits and exclusive discounts in our café and shop. From little explorers in our Jurassic Journey to those who prefer a peaceful riverside stroll watching pelicans glide by, there's something for everyone to enjoy throughout the seasons.

Our gift vouchers make for the perfect last-minute surprise. Delivered instantly by email, they can be redeemed across the park for all items including admission, memberships, experiences, or even a treat in our café or shop.

So, as the festive season unfolds, we invite you to discover the joy of giving gifts that celebrate nature, support conservation, and make memories that last well beyond Christmas.



Dried Quality Hardwood Logs & Kindling

Guiting Manor Farms LTD, GL54 5UX
www.guitingmanorfarms.co.uk

Phone: 01451 850320 or
Wayne: 07778349132 or **Ed:** 07768260362
Email: gmf@guiting.org.uk

**** Delivery within 3/5 days and arranged to your convenience ****
(Monday-Friday)

<p>Log Prices <i>Includes Delivery & VAT</i></p> <p>Guiting Village</p> <table border="0"> <tr><td>Single Load</td><td>£190</td></tr> <tr><td>Half Load</td><td>£120</td></tr> <tr><td>1.5 Load</td><td>£285</td></tr> </table> <p>Upto 8 Miles</p> <table border="0"> <tr><td>Single Load</td><td>£200</td></tr> <tr><td>1.5 Load</td><td>£295</td></tr> <tr><td>Double Load</td><td>£390</td></tr> </table> <p>8-20 Miles</p> <table border="0"> <tr><td>Single Load</td><td>£210</td></tr> <tr><td>1.5 Load</td><td>£305</td></tr> <tr><td>Double Load</td><td>£400</td></tr> </table> <p>Extras</p> <table border="0"> <tr><td>Kindling</td><td>£5.50</td></tr> <tr><td>Plastic Sheeting</td><td>£5</td></tr> </table>	Single Load	£190	Half Load	£120	1.5 Load	£285	Single Load	£200	1.5 Load	£295	Double Load	£390	Single Load	£210	1.5 Load	£305	Double Load	£400	Kindling	£5.50	Plastic Sheeting	£5	 <p>Single Load 1.6 Cubic Metres 1 Meter x 5.4 Meters when stacked</p> 
Single Load	£190																						
Half Load	£120																						
1.5 Load	£285																						
Single Load	£200																						
1.5 Load	£295																						
Double Load	£390																						
Single Load	£210																						
1.5 Load	£305																						
Double Load	£400																						
Kindling	£5.50																						
Plastic Sheeting	£5																						




Company: Guiting Manor Farms Ltd
Certificate No: W5786/00003



the
**Cotswold
Lighting
company**

BASED IN GODFREY PLACE, UPPER RISSINGTON

Electrical Contractors

Domestic . Commercial . Industrial . Agricultural

The Cotswold Lighting Company covers **ALL** aspects of **electrical design and installation**, from extra sockets to complete re-wires.

We also specialise in creating unique lighting effects for your home and garden.

visit www.cotswold-lighting.com for more information. No job is ever too big or small!

FREE estimates!

Contact us today on

01451 810 710 or 07931 591 193

Alternatively email us at contact@cotswold-lighting.com



EST. IN COTSWOLDS SINCE 2006 / FULL PART P REGISTERED ELECTRICIANS



Headspace: Local Charity Launches Online Auction to Support Young People's Mental Health

Headspace — the North Cotswolds charity supporting young people's mental health and wellbeing — has launched its first-ever Charity Online Auction, raising vital funds to support its work with local young people and families.

The auction is now live throughout November, featuring an ever-growing list of fantastic prizes generously donated by local businesses and supporters. New lots are being added daily, so there's always something new to bid on!

From luxury experiences and family days out to dining treats and short breaks, there's something for everyone.

Some of the exciting lots include:

- A week in Cornwall at a 7-bed holiday home
- Distillery and brewery tours from Wood Brothers, Hawkstone, and Hook Norton
- Fourballs at top golf courses including Celtic Manor, Trevose, Burford, The Wychwood, and Manor House (Castle Coombe)
- Dining at The Chip Shed, Venezia Italian, and Slaughters Country Inn
- A Beautiful Bourton massage, LEGO sets, Go Ape tickets, and much more

Headspace CEO Paul Heming said:

"We've been blown away by the generosity of local businesses and individuals. Every prize donated helps us raise essential funds to provide counselling, mentoring, and wellbeing sessions for young people who need our support. This is a brilliant example of our community coming together to make a real difference."

Secure your financial legacy for future generations



Whether you:

- Have concerns about recent tax changes
- Are considering how best to support the next generation
- Or are simply looking to make your investments work harder for you

...we are here to help.

No need to book - just drop in for your **30-minute, no-obligation initial consultation** with our experts.



**Saturday
31 January 2026
10am - 2pm**



**The Lifford Memorial Hall,
Lower Green, Broadway,
Worcestershire, WR12 7BU**

If you would prefer a scheduled time or can't make it on the day, please email kirstie.rees@quiltercheviot.com to arrange a consultation at a date and time that suits you.

If you already have a financial adviser, always consult them on planning requirements in the first instance.



**QUILTER
CHEVIOT**

**SPECIALISTS IN
INVESTMENT MANAGEMENT
AND FINANCIAL PLANNING**

Capital at risk. Quilter Cheviot Limited is authorised and regulated by the UK Financial Conduct Authority and as an approved Financial Services Provider by the Financial Sector Conduct Authority in South Africa.

This is a marketing communication. Approver: Quilter Cheviot Limited, 13 November 2025.

All auction details, including how to view and bid on items, can be found at: www.myheadspace.org.uk/news-events/online-auction-november-2025

Every donating business will also be featured on Headspace's social media channels during November as part of a thank-you campaign celebrating their generosity and community spirit.

Headspace has been providing mental health and wellbeing support to young people since 2017. Based in the North Cotswolds, the charity works with local schools, families, and community organisations to ensure every young person can access the help they need to cope with life's pressures.

For more information, visit www.myheadspace.org.uk or contact Paul Heming, CEO of Headspace, at paul.heming@myheadspace.org.uk / 07748 965227.

A Cotswold Fellow

I am a Cotswold Fellow

Who lives where houses are a lovely shade of yellow.

Where visitors come

From Bristol, Gloucester, Coventry and Brum.

To Birdland to talk to a parrot

Or give the donkey a carrot.

To see in miniature our village of the past

Or picnic on the green where the Windrush runs fast.

With shops either side of the river

Selling their goods, some who will deliver.

Our neighbours are Upper and Lower Slaughter

You guessed, I come from Bourton-on-the-Water.

When winter walking in Bourton there's no need to shiver
Because you'll feel the warm glow of the tree in the river.

P Pulham





Panto Group

Bourton Panto Group Presents

Beauty and the Beast - Coming January 2026!

With January fast approaching, preparations for our production of Beauty and the Beast are in full swing. The cast and crew have been working their socks off, filling the rehearsal room with laughter, music and the occasional growl from our very own Beast! Behind the scenes, our talented teams are busy transforming everyday materials into enchanted castles, magical roses, and costumes fit for both princes and villagers. The excitement is building as we bring this beloved tale to life — a story full of charm, comedy, and a little touch of panto magic that always makes Bourton's annual show such a highlight of the village calendar.

Tickets on Sale Soon

Tickets will officially go on sale from Wednesday 26th November and can be purchased easily through our website, Facebook, and Instagram pages via the ticket link. Prefer to book directly? Margaret will be happy to help on 07791 917684.

For those who like to buy in person, there will be a last-minute ticket morning on 16th January, from 11am–1pm at the George Moore Community Centre — a great chance to secure your seats.

Get Festive With Us!

Before the show arrives, join us for our Annual Festive Quiz on Friday 5th December, raising funds to support this year's production. It's always a fun, lively evening and a brilliant way to get into the Christmas spirit. (See poster for full details.)

With colourful characters, a much-loved fairy-tale story, and plenty of pantomime fun for all, Beauty and the Beast promises to be one of our most enchanting shows yet. We can't wait to welcome you — be ready to laugh, cheer, and shout "He's behind you!"

Follow us on social media for updates, sneak peeks, and behind-the-scenes magic as opening night approaches!

Emily Franks and Clodagh Ogden



GREENER OHMS
ELECTRICAL

"Bringing sunshine into your homes"

- * Domestic electrical repairs and installations
- * Commercial electrical repairs and installations
- * Solar panel systems [PV]
- * Battery storage installations

Unit 1, Cotswold business park, Range Road,
Witney, Oxfordshire, OX29 0YB.

www.greenerohms.co.uk

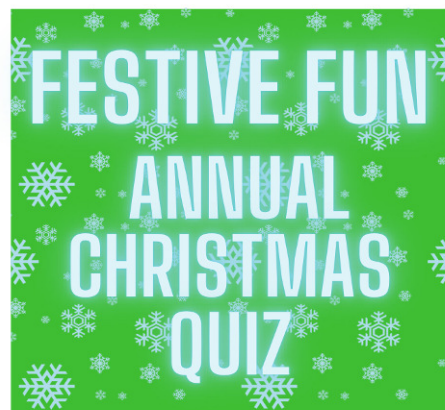
01993 684020



FRIDAY
5TH DEC

THE VICTORIA
HALL

BOURTON-ON-
THE-WATER



£20 PER
TEAM OF 4
(INCLUDES NIBBLES)

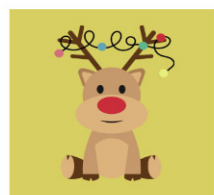
WINE, BEER AND
SOFT DRINKS WILL
BE ON SALE

DOORS
OPEN AT
6.45 FOR A
7.30 START

TO BOOK YOUR TABLE ...

Contact Margaret on 07791917684
with the following...

- Name
- Contact number
- Payment method (cash/bank transfer)



THE CUT OFF DATE FOR ENTRIES WILL BE WEDNESDAY 3RD DECEMBER AT 7PM

Bourton Rural Cinema

Please be aware that there is no film in December

Our next film will be on Monday, January 19th.

It will be 'Ballard of Willis Island'.

We wish you all a happy and healthy Christmas.

Denease Robinson



MAKE LIFE EASIER

- Large range of Mobility Aids
 - PPE • Hire services
 - Wheelchairs
- Mobility Scooters and repairs
 - Stairlifts
- Rise and Recline furniture
 - Adjustable beds
- Cosyfeet shoes and slippers

FREE
HEARING
HEALTH
CHECK

THE MOBILITY STORE
SWINDON
7 Clive Parade
Cricklade Road,
Swindon SN2 1AJ
01793 701313
swindon@thehearingand
mobilitystore.co.uk

THE MOBILITY STORE
MARLBOROUGH
56 George Lane,
Marlborough SN8 4BY
01672 511550
wiltshiremobility@mail.com

THE MOBILITY STORE
WROUGHTON
6 Devizes Road
Wroughton SN4 0RZ
01793 815083
wroughtonmobility@mail.com

THE MOBILITY STORE
BOURTON ON THE WATER
Lansdowne
Bourton on the Water GL54 2AR
01451 810088
bourtonmobility@mail.com

FREE LEVEL ACCESS PARKING AT ALL STORES
www.thehearingandmobilitystore.co.uk



Did you know that some Bourton Businesses give residents a local discount? We have compiled a list of them below

To get your residents card simply take **proof of address** along to one of the distribution points:
The Parish Council office in the Community Centre, Boho House, Magic & Mischief or The Willow.
Simply show this to one of the businesses below to get your local discount applied discreetly and embarrassment free. **PHYSICAL CARD ONLY VALID**

TO EAT AND DRINK

CROFT RESTAURANT 10%	THE DEN 10%	BOX BUSH 10%	FRESH 4 LUNCH 10%
SLAUGHTERS COUNTRY INN 10%	THE WILLOW 10% AND LOYALTY CARD	BAKERY ON THE WATER 10%	LORDS OF THE MANOR 10%
COTSWOLD ICE CREAMS 15%	SOUL BOWL 10% AND LOYALTY CARD	HAWKSTONE BREWERY	THE CHESTNUT TREE 10% AND LOYALTY CARD
SMITHS OF BOURTON 15%	THE OLD MANSE 10% FOOD AND ALES	DUKE OF WELLINGTON 10% OFF FOOD OR FOOD AND DRINK PURCHASED TOGETHER	JUST SPUDS 10%
MRS ROLT TEAROOMS 10%	THE OLD NEW INN 10% OFF DRINKS	TO BE ADDED EMAIL BOURTONVALE@GMAIL.COM	TO BE ADDED EMAIL BOURTONVALE@GMAIL.COM

TO SHOP

BOHO HOUSE 10%	MAGIC & MISCHIEF 10%	SHALOM 10%	VICTORIAN CHRISTMAS SHOP 20%
DIBBLES NIBBLES 15%	SWEET TREATS & GIFTS 10% OFF SWEETS	COTSWOLDPETSUPPLIES.CO.UK 10% CODE BOURTON	ONCE UPON A CANDY SHOP 10%
LITTLE NOOK 10%	QUIRKY 10%	THE COTSWOLD SHOP 10%	TO BE ADDED EMAIL BOURTONVALE@GMAIL.COM

TO VISIT AND STAY

DRAGON FLY MAZE 20%	WWW.BSIMPLYROOMS.COM 15%	SOUTHLANDS B&B 10%
THE MOTOR MUSEUM 10%	TO BE ADDED EMAIL BOURTONVALE@GMAIL.COM	

Christmas Tree in the River

When Bourton's Xmas tree appears
We need to thank all the volunteers,
Who delivered and decorated the tree,
Thousands shall now come to see.

Despite the cold, rain or snow,
Bourton will be the place to go -
When carols are sung near the tree,
Whose lights burn so, so brightly.

A river haven it provides, too,
Where ducks will hover and accrue;
And its brightness shall shine
In children's eyes for a long, long time.

Such a welcome, seasonal sight,
All aglow through the darkest night,
When a beacon it can also be,
Heralding much more than a Xmas tree.

Hugh O'Connell



Christmas Day

Bring Families together
Help storm the weather.

Gifts given with love and care
Fresh baked mince pies to share.

Fill houses with love not fear
Sharing tales from yesteryear.

Christmas lunch a feast to enjoy

Toys for every girl and boy.

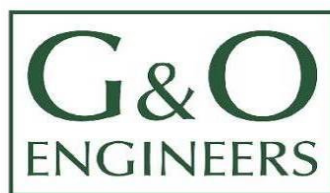
Warmth bought from not just the fire

Sweet singing from the choir.

Let all our worries fade away

As today is Christmas Day.

Carol Groom



1 Cotswolds Business Park,
Range Road, Witney,
Oxfordshire, OX29 0YB.

**Oxfordshire based company bringing great
local services to your door...**

- Boiler service and repair.
- Gas, Lpg, Oil and Electric.
- Heat pumps, boilers, Agas and Rayburns.
- Plumbing and heating services.
- Repairs and installations.
- Building renovations and maintenance.
- New builds, extensions and repairs.
- Electrical services.
- Repairs and installations.
- Solar panels and batteries.

01993 771754

info@gandoengineers.co.uk | www.gandoengineers.co.uk



CLARKE & HUMPHRIES
MODERN BUILDERS, PROFESSIONAL MAINTENANCE, TRADITIONAL VALUES

One of the Cotswolds Premier Building
Companies is also offering a

**PROFESSIONAL
HANDYMAN
SERVICE**

Experienced multi-skilled tradespeople
ensuring excellent value for money
and reliability...

01451 822 577

maintenance@clarkeandhumphries.co.uk

Dave's Aerials & Satellites

Credit & debit cards accepted.

Optical fibre, Networking & European Satellite Specialist.

All types of aerial, satellite & CCTV camera work undertaken.

Thank you for supporting your local engineer for over 35 yrs.

Call free on 01451 495014

T. 07928 203589 E. aerialdave@hotmail.co.uk

www.davesaerialsandsatellites.co.uk



Christmas Acrostics

Children crying from hunger – others from greed
 Having nothing at all or – heaps indeed
 Rocking in mothers stick thin lap – or
 Raging because their game went snap.
 Is the skeletal child going to last the day?
 Is the pile of presents bigger this year, would you say?
 Scarce supplies might save some lives – for what?
 Scrumptious surfeit, excess – too much for one pot!
 Too many folk in obscene poverty & need
 Too many profiteering from consumers greed
 Many Christmas appeals alleviate distress
 Many Boxing Day sales get more stuff for less
 All their lives spent scratching a living
 All consuming lives, indulging, polluting
 Show them much more basic humanity
 Save ourselves maybe, with more humility.



Carollers crunching through the snow
 Hooting owls and bleating sheep,
 Ringing church bells in valleys below
 Icy twigs snap where lone deer leap
 Sleepy children snuggled up tight
 Tired Mums turning down the light
 Morning breaks – Oh! Magical glow
 All squeals and happiness, fun and laughter
 Special baby is born for man ever after.

Madeline Cox

mike ciger

GARDENING LANDSCAPING **HOME REPAIRS & IMPROVEMENTS**

07851 288 733

*** BOURTON ON THE WATER ***

✉ **mike@ciger.co.uk** **www.ciger.co.uk**

Remembrance Sunday Parade

I would like to say what a privilege it was to be at the war memorial on Remembrance Sunday, to see so many people gathered together to pay our respects, and honour those who lost their lives during the First and Second World Wars. It was, as always, great seeing the parade marching through the village. However, what saddened me was to see no Rainbows, Brownies, or Guides present. When I moved to the village 26 years ago, there were 2 Brownie packs, and a Guide unit, all very active. Is there no one in our community who might consider re-starting any of those groups? We have the Baden Powell hall, which was built originally for both Scouts and Guides to use, so can I just urge anyone interested to take up the challenge. It's great that we have the Scout movement so well represented, and congratulations to their volunteers. **Heather Paterson**

HIRE of HALLS

Baden Powell Hall lettingsbph@gmail.com
Baptist Church Hall Tim Newstead 01451 821523
Bourton Cricket Clubhouse jlthepavilion@gmail.com
Bourton Farmers Market Miles Salmon 07980 080073
British Legion Hall Branch Office 01451 824303
Broadwell Village Hall Tracey Spragg
broadwellvillagehall@gmail.com
Cotswold Hall, Northleach Jacques Astic 01451 860366
George Moore Community Centre Jo Herbert 01451820712
assistant.clerk@bourtononthewater-pc.gov.uk
Lower Slaughter Village Hall annclass@yahoo.com
St. Lawrence's Mrs Gill Willett 01451 821484
familywillett@hotmail.co.uk
Victoria Hall Sue Roberts 01451 822230
Wyck Rissington Village Hall Vicky Lathe 07584 188 200
vhwycriss@gmail.com

LOCAL GROUPS AND ORGANISATIONS For amendments email: team@bourtonbrosner.co.uk or call 01451 822431

Archery Club	GRArcheryClub@gmail.com
Badminton Club	clclare@gmail.com
Bell Ringers, BOW	Stephanie Hemming 01451 810996
Bell Ringers, Gt Ris	Andrew Fleming 07711 867280
Bourton Book Club	csandles75@gmail.com
Bourton Road Runners	Nicky Patterson Brr.clubsec@gmail.com
Bourton Rovers Chairman	Liam Williams 07769 216528
Bourton Vale Cricket Club	Kevin Langley 07375 033609
Bourton Vale Tennis Club	www.bourtontennisclub.org
Brass & Silver Bands	Stephanie Hemming 01451 810996
Community Day Club	Support Service team 01608 652019
Cotswold Friends	www.cotswoldsfriends.org 01608 651415
Cotswold Yoga	Nazuna Yeo 07490858775
Dementia Friendly Café	Kathy Chesters 07746 672726
Fitness League	Kathy Kirk 01993 882350
Gardening Club	Sheila Thorpe 07973391741
Glos. Advanced Motorists	Rod Harrison. 01451 821605
Hockey Club	admin@bashc.co.uk
Jubilee Lodge	01451 823100
McTimoney Practitioner	Tina Hamer 07884 312559
Men in Sheds	Keith 01451 831886
Moreton Bowls Club	Linda Bennett mbcbowling1@gmail.com

North Cotswold Arts Association	Jeni Smith	078506 50763
North Cotswold Gymnastics Club	Caroline Gill	01451 263130
OPEN 4U	Barbara Newstead	01451 824225
Panto Group	Angela Layton	01451 821344.
Probus Club	Kevin Hick	01451 860435
Rotary Club Nth Cotswolds	Steve Whincup	07488 365908
Royal British Legion Bourton	Bill McKenzie	01451 824303
Rural Cinema	Mollie Wise	01451 822365
Scottish Dancing Group	Christine Bucknall	01993 830760
	Bucknallce@gmail.com	
Short Led Walks	Carol Price	01451 810305
Stay strong & Steady	Cally Maxwell	07957 546 067
	cotswoldactivehealth@gmail.com	
Stow Textile Group	Julie Smith	01608 651006
T'ai Chi	Valerie Ward	07779 746346
u3a Bourton & District	www.bourton.u3asite.uk	
Victoria Hall	Sue Roberts	01451 822230
Village Warden	Steve Cotton	07729 114833
Volunteer Help Centre		01608 651415
WI	Pat Taylor	07518 457 652
Windrush Carers Support Group	Barbara Newstead	01451 821523
4 Shires Swimming Club	Jo Shaw	memberships@4ssc.uk

Bourton Library

The George Moore Community Centre,
Moore Road, Bourton-on-the-Water,
GL54 2AZ. 01451 820964

Opening Hours

Tues 10am-1pm, Wed 2-5pm, Fri
10am-1pm & 2-5pm, Sat 10am-1pm.

Friendly staff & volunteers.

Internet access,

Advert Printing & Photocopying.

www.gloucestershire.gov.uk/libraries

Emily Sutton-Redford

07823 429150

ABOUT THE *BOURTON BROWSER*

All articles received will be printed wherever possible in the magazine & on the website, however we reserve the right not to print anonymous letters or anything of a defamatory or controversial nature.

We have a word limit of 300 words per article.

If your contact details appear in the Bourton Browser they will be on our website copy. If you do not want this to happen, tell us. Unless we hear from you, we will assume consent.

The views of contributors to the Bourton Browser may not necessarily be those of the Editor, nor can the Bourton Browser accept any responsibilities in connection with any companies or organisations mentioned.

The *Bourton Browser*
is printed by Peter Dunford,
01608 658104,
petedunf@aol.com

Rates and Dates for advertising in the *BOURTON BROWSER*

Full details: www.bourtonbrowser.co.uk

6 x 9 cm per mth £36, per 3 mths £77,
per 6 mths £148, per 12 mths £275. 9
x 12 cm per mth £72, per 3 mths £154,
per 6 mths £296, per 12 mths £550.
Deadline 15th of preceding month.
Email team@bourtonbrowser.co.uk to
enquire about booking. State size re-
quired & attach advert as a jpeg or pdf.
I will confirm if space is available or you
may call 01451 822431 to discuss. Ad-
vertising spaces are limited, early book-
ing & prompt payment is essential.

Delivery—We print 2300 copies & aim
to deliver to every house in Bourton-
on-the-Water & Clapton-on-the-Hill.

Ray Dodd, Advertising Manager



Christmas Charity Band Concert

Saturday, 6th December 2025 at 7:30pm

**Waterloo Band &
Bugles of The Rifles**
at the School Hall
The Cotswold School
Station Road
Bourton-on-the-Water

TICKETS
Adults £15.00 Under 16 FREE
(£16.00 at the door)

ON SALE AT
Post Offices in
Stow on the Wold and
Bourton-on-the-Water

ONLINE AT
[https://www.ticketsource.co.uk/
rotary-club-of-the-north-cotswolds](https://www.ticketsource.co.uk/rotary-club-of-the-north-cotswolds)

OR USE QR CODE

Arranged by

ROYAL BRITISH LEGION

Assisted by
North Cotswolds
Rotary 

Sponsored by
Brio
RETIREMENT LIVING 

KENDALL & DAVIES SOLICITORS

For a wide range of legal services including:

Residential and Commercial Property Transactions
Company and Commercial Advice
Wills, Trusts and Probate
Inheritance Tax Planning
Lasting Powers of Attorney
Litigation
Debt Collection
Matrimonial and Family Matters

STATION ROAD, BOURTON ON THE WATER, GL54 2AA

Tel: 01451 820277

Email: bourton@kendallanddaves.co.uk

www.kendallanddaves.co.uk

Offices also at: Stow on the Wold, Burford and Moreton in Marsh



W. J. Wright

Funeral Directors & Bereavement Care

Bourton-on-the-Water
Telephone: 01451 810700
info@wjwrightfunerals.co.uk

Personal Caring 24 Hour Service
Family Owned Funeral Home
Serving our Community
Private Chapel of Rest

Funeral Directors

Rachael Pickard

Natasha Flynn ~ Julie Smith